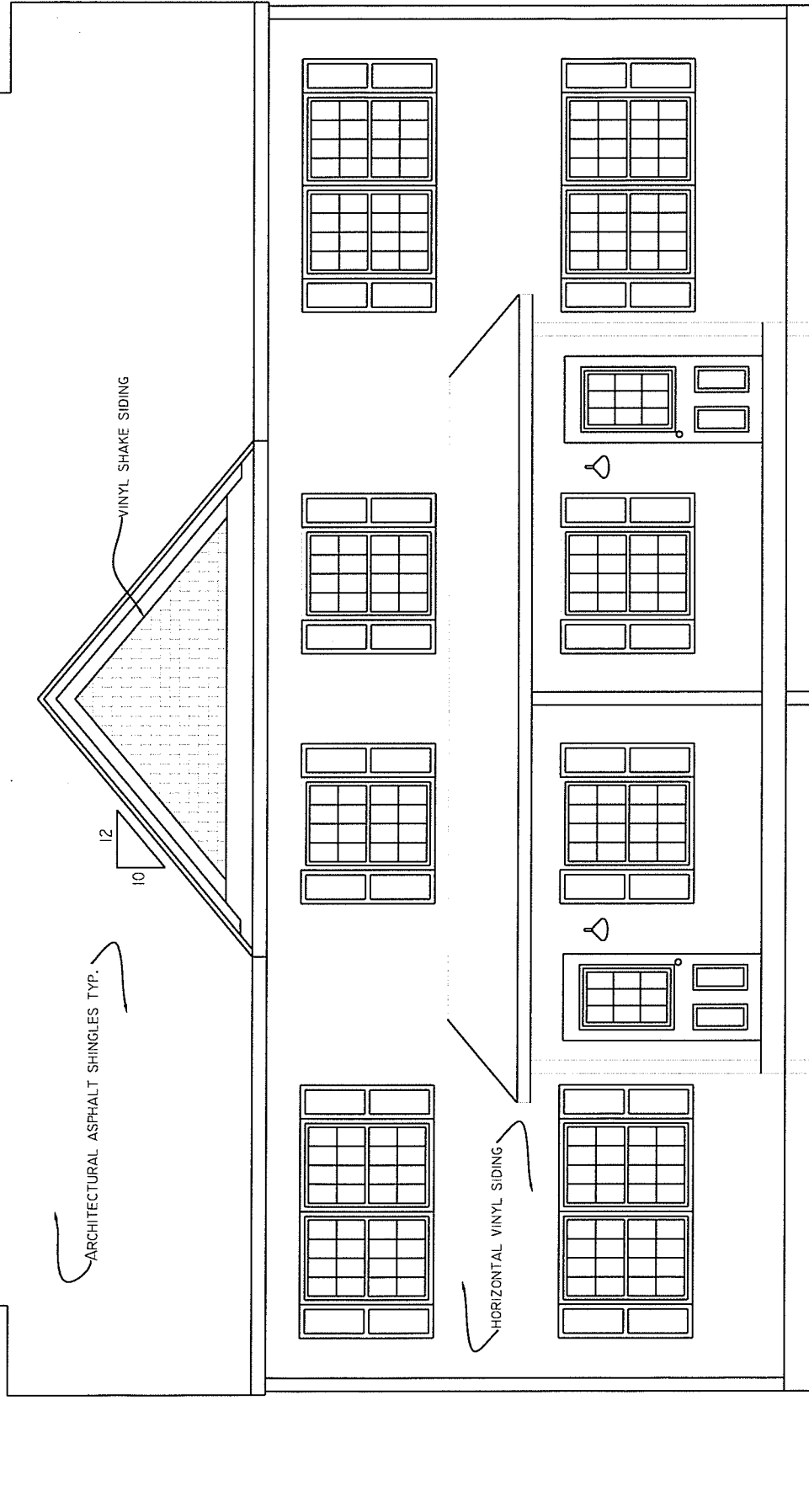


RECEIVED

AUG 23 2018

DEPARTMENT OF  
PLANNING & ZONING



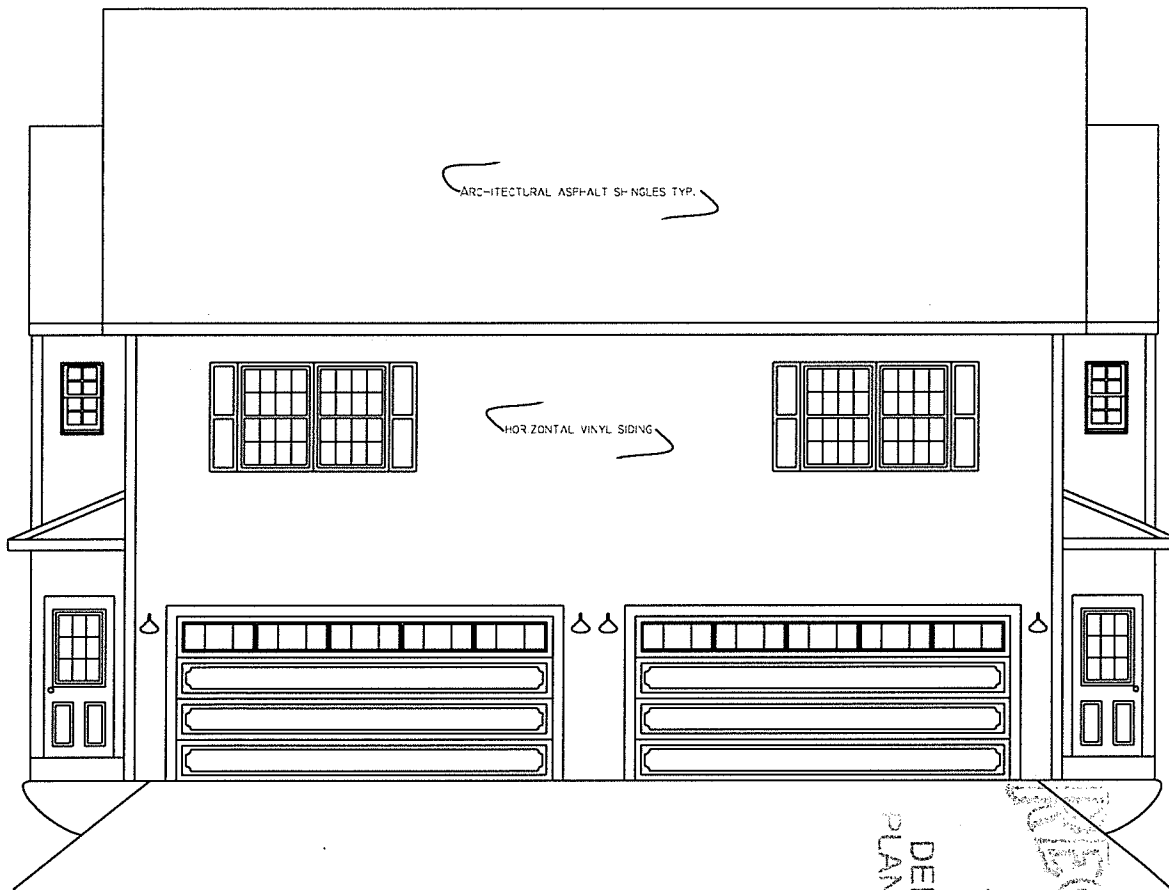
FRONT ELEVATION

1288 North Ave LLC

1288 NORTH AVE  
 BURLINGTON, VT  
 05401-1048  
 +US (802) 548-7800

8-13-18

ALL DIMENSIONS ARE APPROXIMATE. ILLUSTRATIONS ARE THE ARTIST'S  
 RENDERING ONLY. CHANGES DURING CONSTRUCTION MAY OCCUR.



DEPARTMENT OF  
PLANNING & ZONING

AUG 23 2018

~~RECEIVED~~

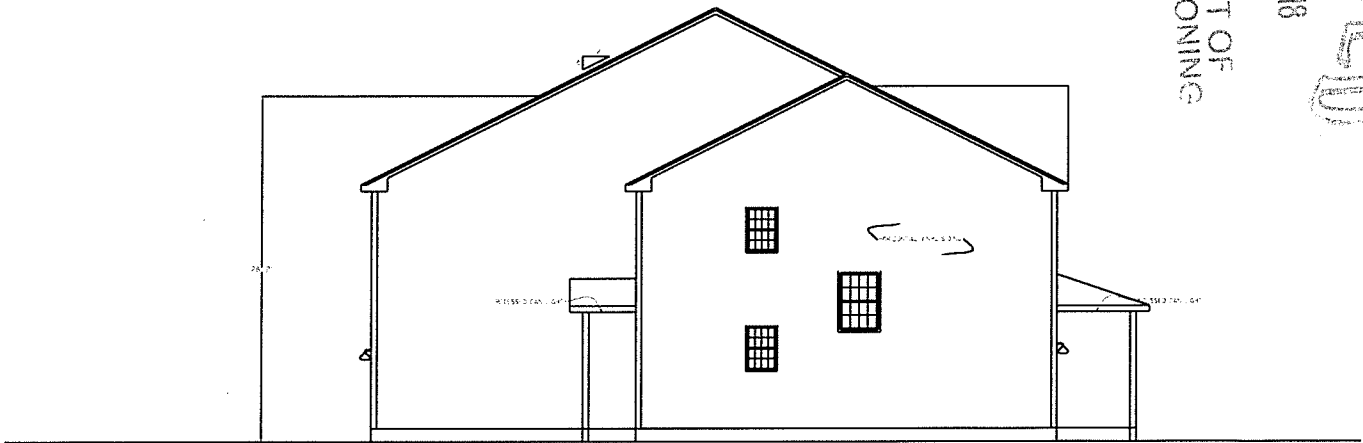
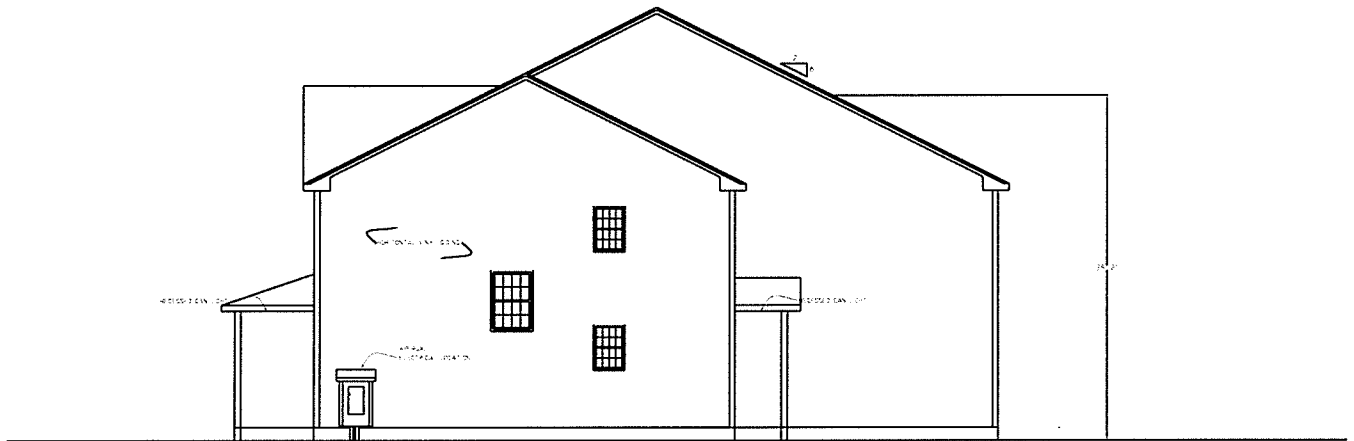
1288 North Ave LLC

# REAR ELEVATION

ALL DIMENSIONS ARE APPROXIMATE. ILLUSTRATIONS ARE THE ARTIST'S RENDERING ONLY. CHANGES DURING CONSTRUCTION MAY OCCUR.

8-13-18

1288 NORTH AVE  
BURLINGTON, VT  
P.O. BOX 222  
VT 05401-0222



RECEIVED  
 AUG 23 2018  
 DEPARTMENT OF  
 PLANNING & ZONING

## SIDE ELEVATIONS

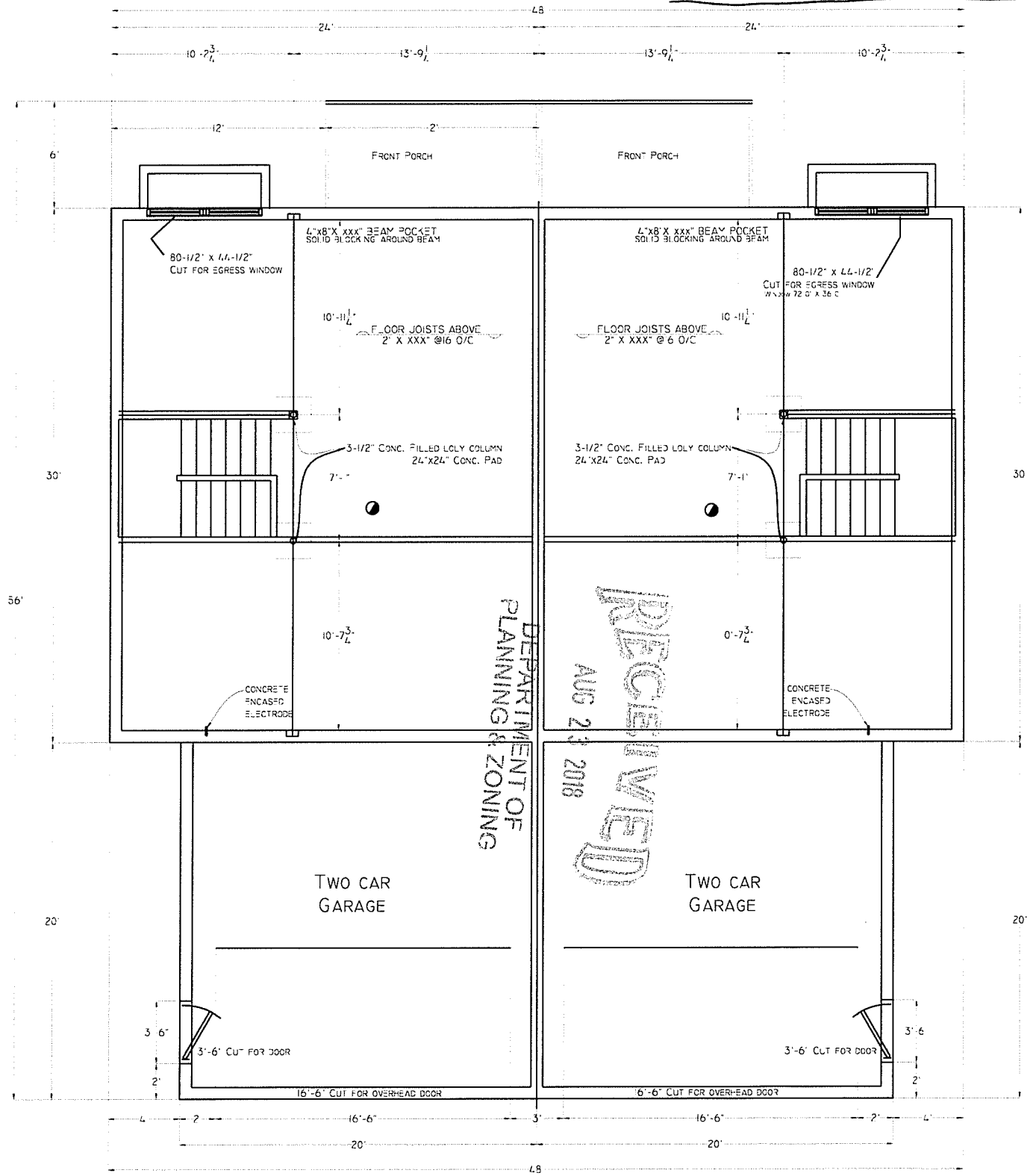
ALL DIMENSIONS ARE APPROXIMATE. ILLUSTRATIONS ARE THE ART ST'S RENDERING ONLY. CHANGES DURING CONSTRUCTION MAY OCCUR.

8-13-18

1288 North Ave LLC

1288 NORTH AVE  
 BURLINGTON, VT  
 P.O. BOX 355  
 CO. CLERK'S OFFICE  
 TEL: 405-998-4945

Total livable sqft: (per unit)  
 1st floor: 719 sqft  
 2nd floor: 1,122 sqft  
 Total 1,841 sqft



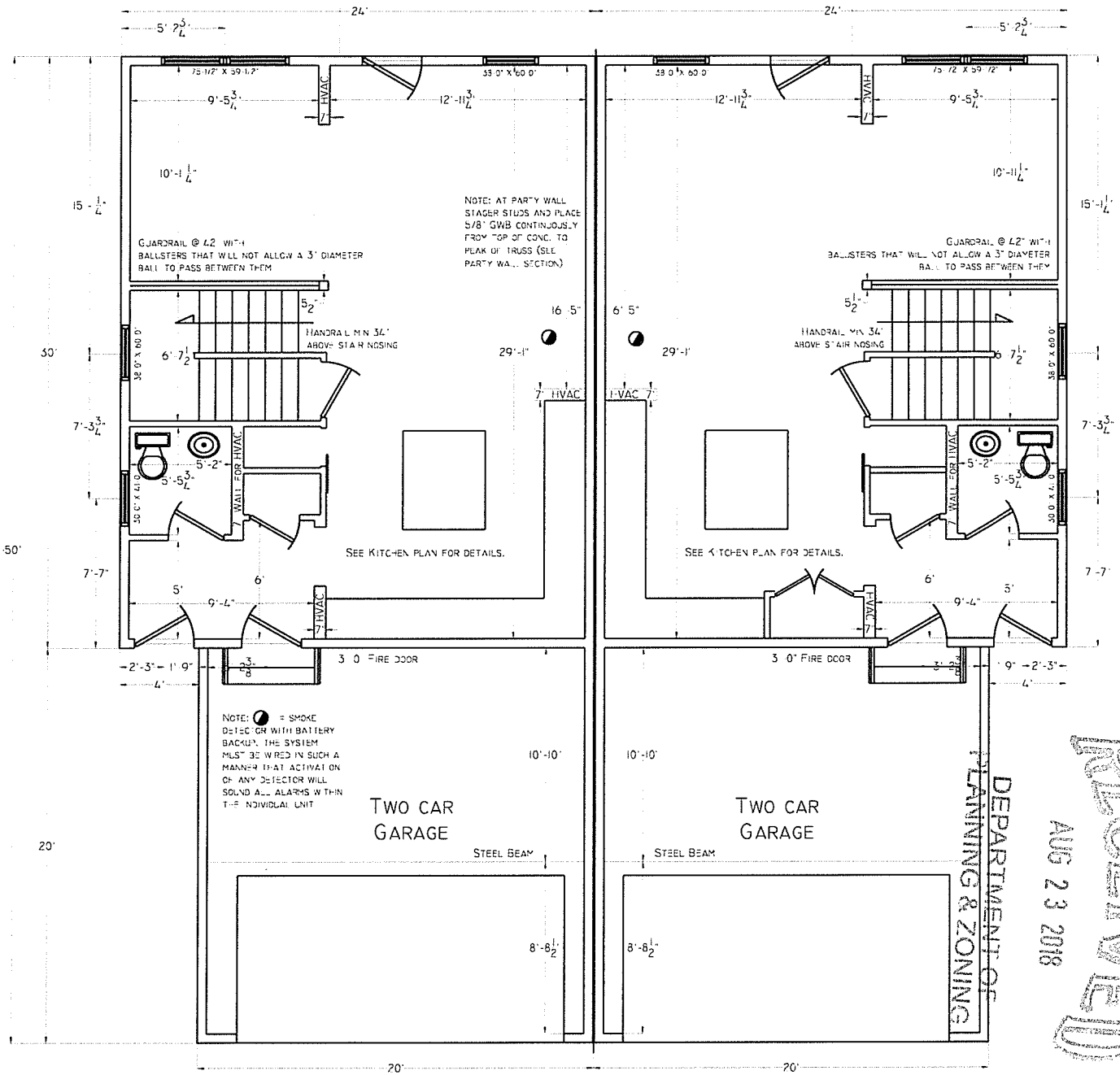
FOUNDATION

ALL DIMENSIONS ARE APPROXIMATE. ILLUSTRATIONS ARE THE ART ST'S RENDERING ONLY. CHANGES DURING CONSTRUCTION MAY OCCUR.

4-15-18

1288 North Ave LLC

1288 NORTH AVE  
 BURLINGTON, VT  
 P.O. BOX 255  
 CC. 05405-0255  
 TEL: (802) 540-4933



RECEIVED  
 AUG 23 2018

# 1ST FLOOR

ALL DIMENSIONS ARE APPROXIMATE. ILLUSTRATIONS ARE THE ART ST'S RENDERING ONLY. CHANGES DURING CONSTRUCTION MAY OCCUR.

4-15-18

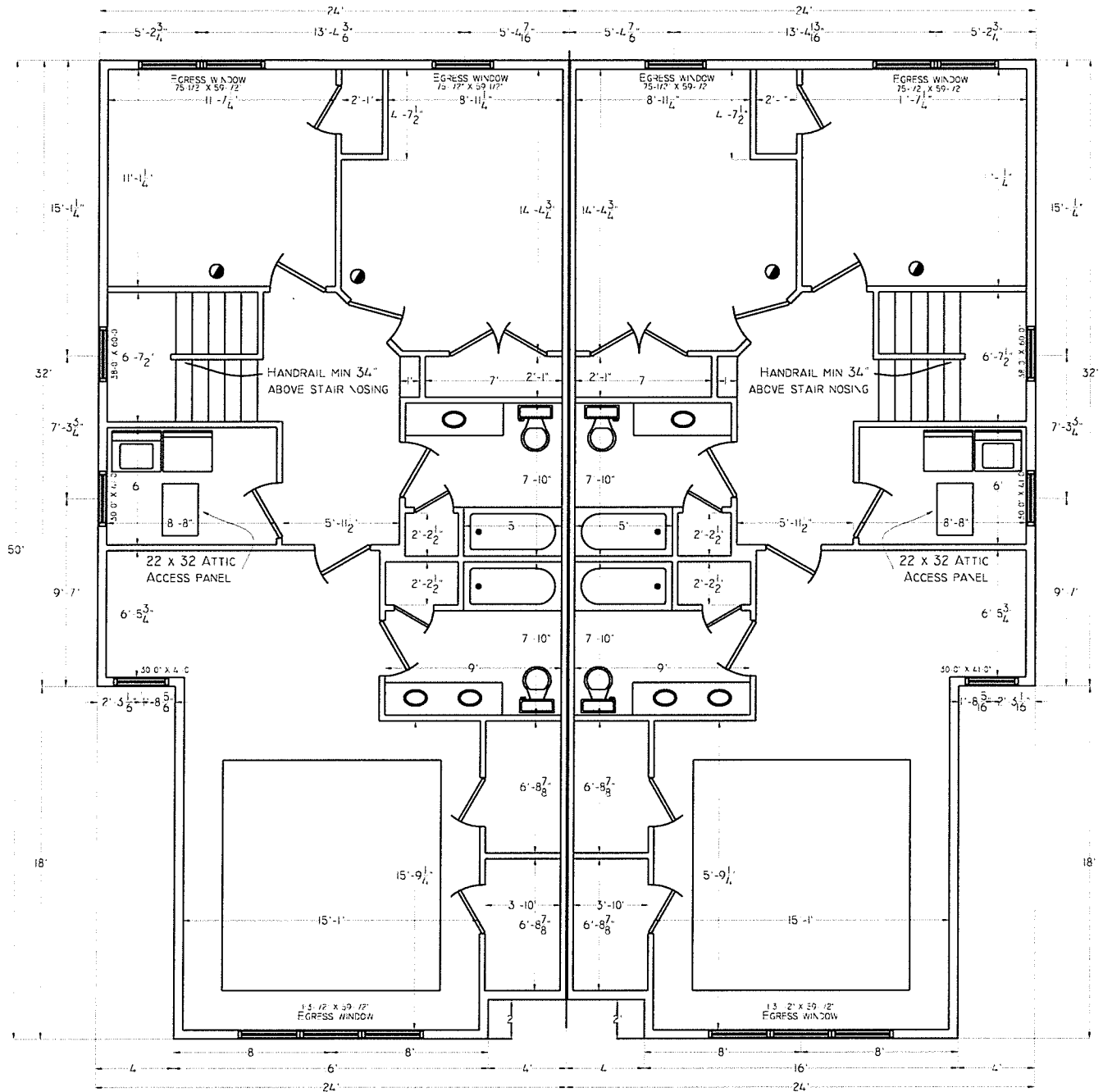
1288 North Ave LLC

1288 NORTH AVE  
 BURLINGTON, VT  
 P.L. 504.022  
 C.D. 12.015, 7.2846 S.U. 1421.004 P.015

RECEIVED

AUG 23 2018

DEPARTMENT OF  
PLANNING & ZONING



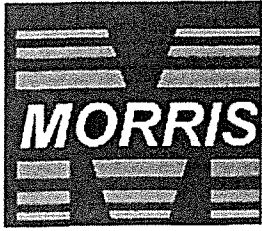
2ND FLOOR

ALL DIMENSIONS ARE APPROXIMATE. ILLUSTRATIONS ARE THE ART ST'S  
RENDERING ONLY. CHANGES DURING CONSTRUCTION MAY OCCUR.

4-15-18

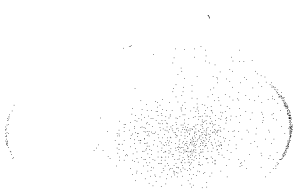
1288 North Ave LLC

1288 NORTH AVE  
BURLINGTON, VT  
PLN. 2018-022  
CO. C 15015.1.7.2018 3/5 1420 378 433



## Surface LED Recessed Lighting Retrofit Kit

- [Email a Friend](#)



[View Larger](#)

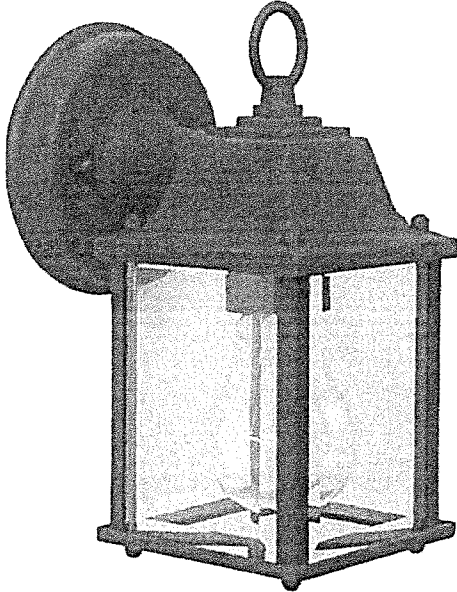
### **LED Surface Mount Recessed Lighting Retrofit Kits provide an energy efficient alternative to Incandescent lighting.**

LED Surface Mount Recessed Lighting Retrofit Kits features include:

- Perfect for Residential and Commercial Installations
- New DOB (Driver on PCB) Technology
- Can be Installed with 4" Junction Box
- Can be installed in most 5" & 6" Downlights
- Recessed Cans - Simple Screw In Installation Including In-Line Pluggable Disconnect
- Includes Torsion Springs and brackets for Recessed Can Mounting
- Aluminum Housing/Trim - Paintable
- TRIAC Dimming
- Compatible with most LED dimmers
- Dimmable Down to 10%
- Guaranteed Single Bin Color Consistency with enhanced illumination uniformity
- Input Voltage: 120VAC
- Beam Angle 120°
- Input Current: 0.1 Amps
- Operating Temperature: -31°F to 122°F
- 50,000+ Hour LED Life Expectancy
- IP43 Damp Location Rated
- IC (Insulation Contact) Rated
- cULus Listed
- 5 year Warranty
- Order Qty of 1 = 1 Piece

**RECEIVED**  
AUG 23 2018  
DEPARTMENT OF  
PLANNING & ZONING

# CRAFTMADE



## Coach Lights Cast - Z192-TB

1 Light Small Wall Mount

Finish: Textured Matte Black



The very definition of classic outdoor lighting, the Coach Lights collection is a welcome - and welcoming - sight for homes of every size. The simple, straightforward shape of the body, with panels of sparkling glass, is a perfect complement to the graceful contours of the sloping roof.

- Die-Cast/sand-cast aluminum components
- Finish is treated with UV guard

### Specs

Mounting Location	Wet
Bulb Wattage	100
Bulb Type	Incandescent
Bulb Size	A-Type
Bulbs	1
Bulb Base	Medium
Carton Size (CU FT)	0.22

### Dimensions

Height (in.)	8.66
Width (in.)	4.53
Top to Outlet (in.)	2.50
Bottom to Outlet (in.)	6.16
Backplate Width (in.)	4.25

### Downloads

RECEIVED  
AUG 23 2018

DEPARTMENT OF  
PLANNING & ZONING