

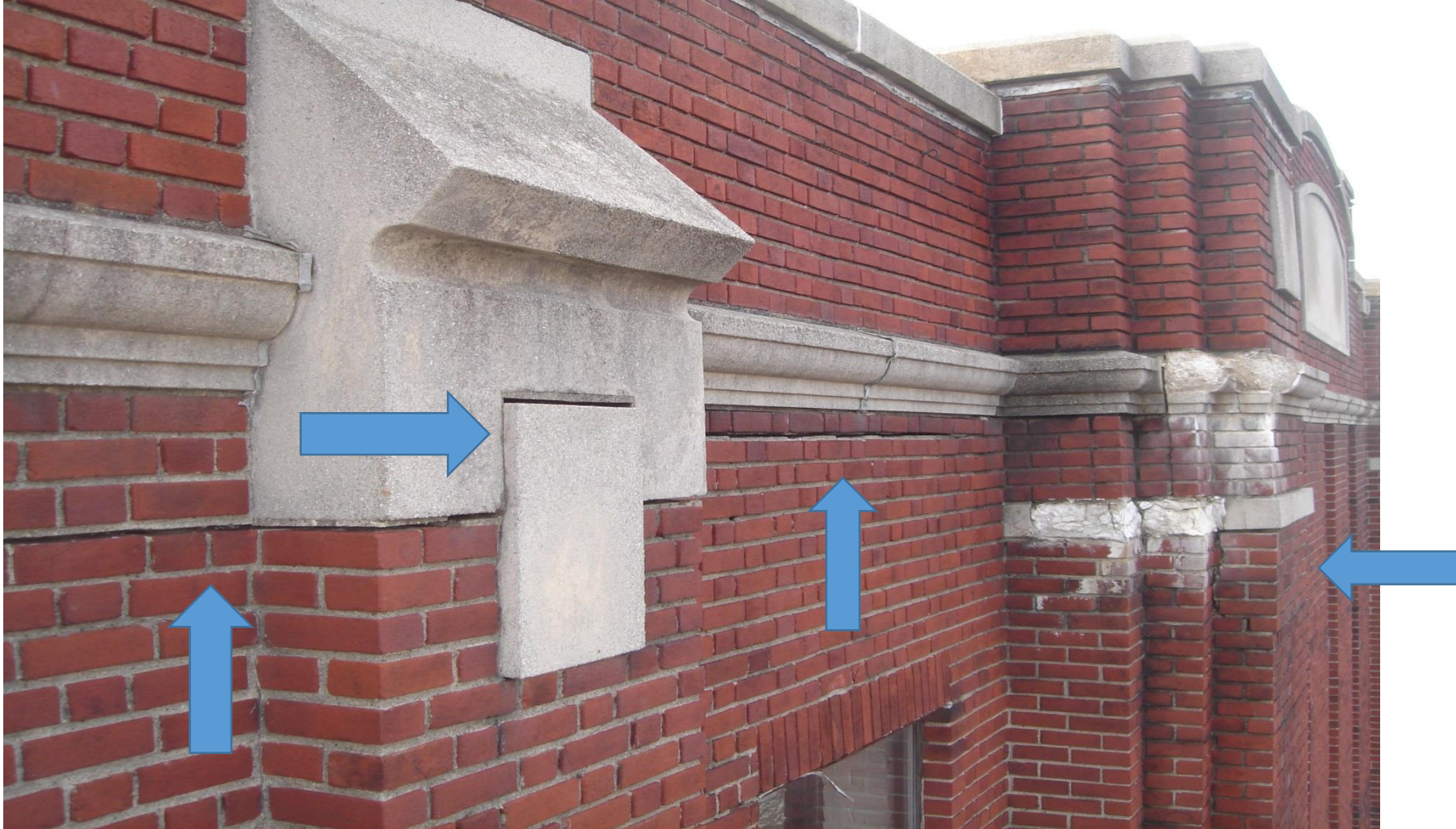
# Memorial Auditorium

October 13, 2015





Horizontal cracks that run length of north and south walls – I beams rusting and pushing masonry out – photo 2008





# Deteriorated cast concrete with cracking due to water damage – photo 2008



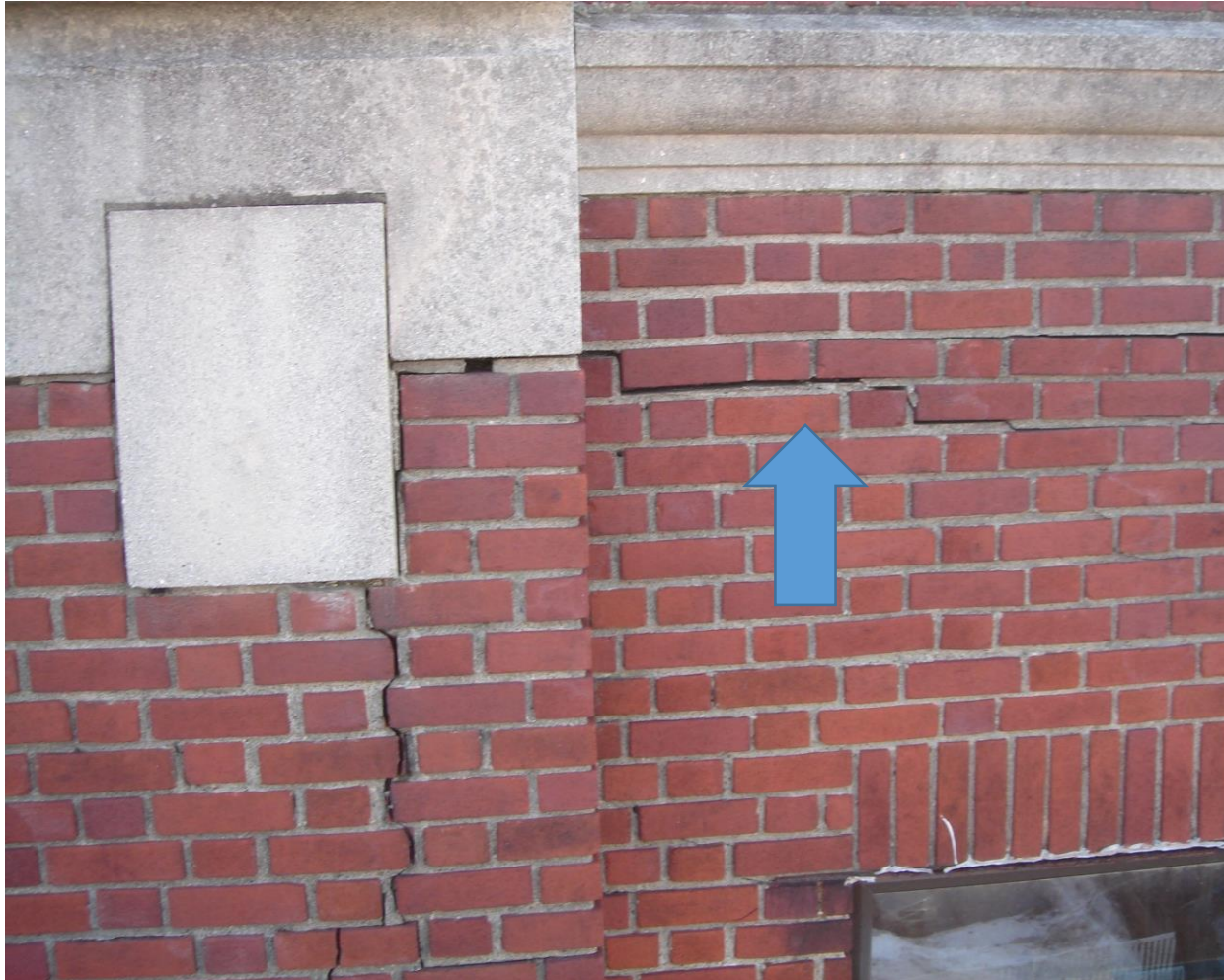


Lintels showing masonry pushed out due to downward pressure from rusting interior members  
photo 2008





Cracks caused by water damage causing steel pylons and I beams to rust exerting pressure outward on masonry – photo 2008





# Rust on interior steel beams

photo 2008





# Cracked 6 x 16 roof beam

photo 2015



# Damaged roof decking – 3” x 5” planks

photo 2015





# Concrete stairwells all need replacement

photo 2008





# 1958 steam boilers

photo 2015

