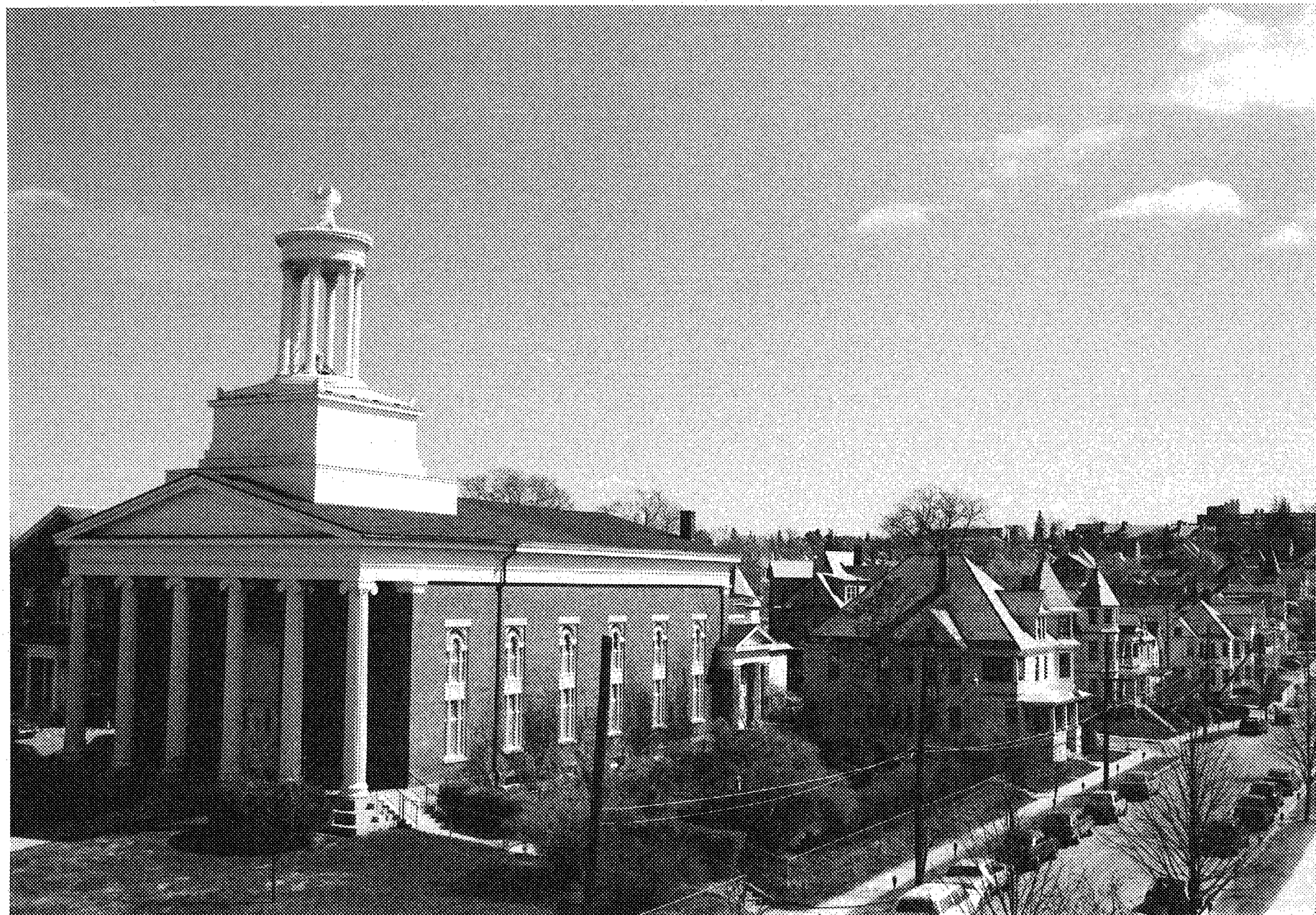




Buell St./Bradley St. Historic District
Burlington, Chittenden County, Vermont
Negative on file at VT Division for Historic Preservation
Credit: Beth Bartz
Date: April 1987
Buell Street streetscape, view looking east
Photo 1

87-A-41



Buell St./Bradley St. Historic District
Burlington, Chittenden County, Vermont
Negative on file at VT Division for Historic Preservation
Credit: Beth Bartz
Date: April 1987
Buell Street streetscape, view looking east
Photo 2

87-A-41



#s 1 and 2

87-2-41

Buell St./Bradley St. Historic District, #s 1, 2
Burlington, Chittenden County, Vermont
Negative on file at VT Division for Historic Preservation
Credit: Beth Bartz
Date: April 1987
Building #s 1 and 2, Orchard Terrace, view looking NW
Photo 3

U.S. GEOLOGICAL SURVEY

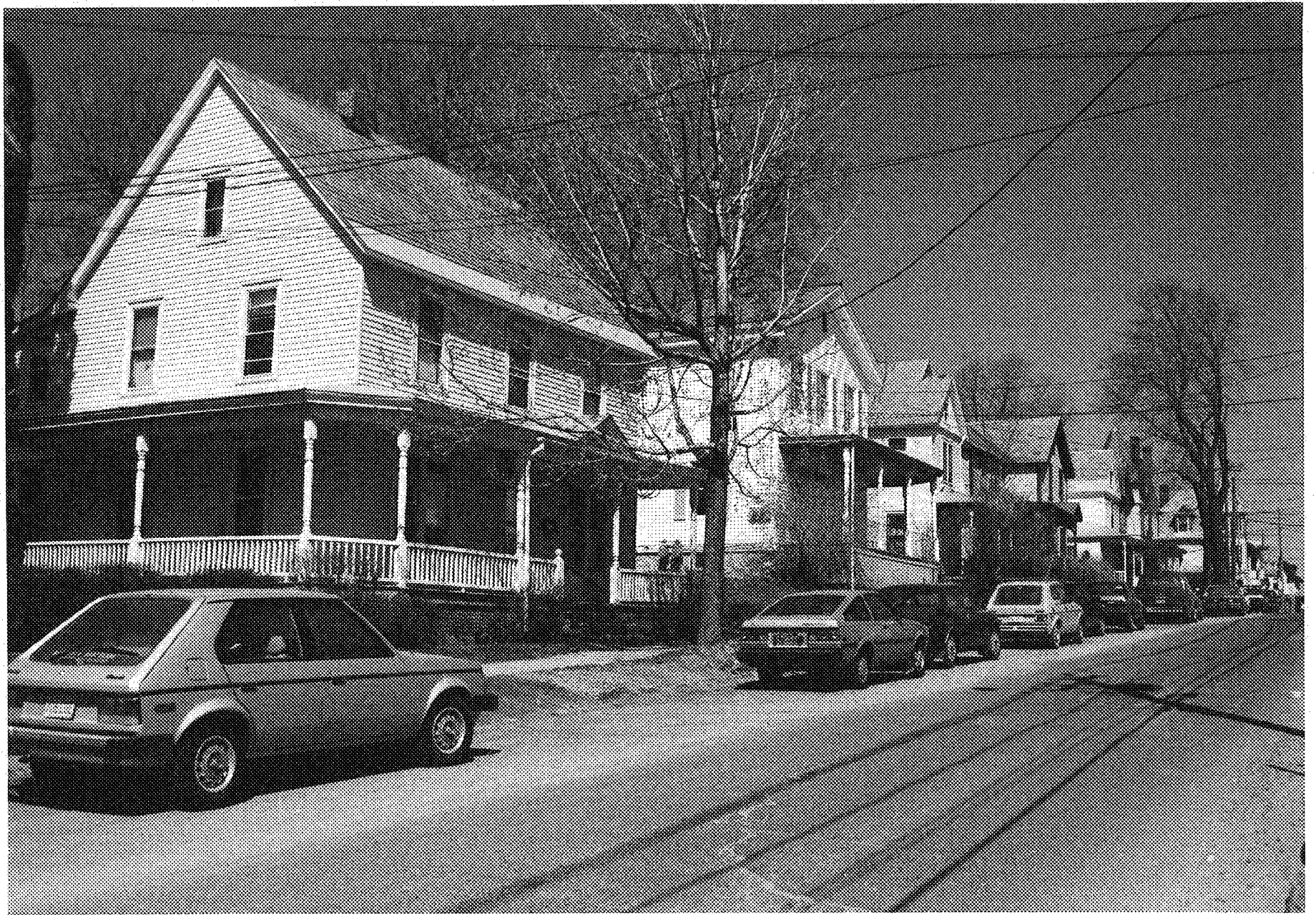


#s 9-12

87A-41

Buell St./Bradley St. Historic District, #s 9-12
Burlington, Chittenden County, Vermont
Negative on file at VT Division for Historic Preservation
Credit: Beth Bartz
Date: April 1987
Building #s 9 - 12, Orchard Terrace, view looking NE
Photo 4

Buell St./Bradley St. Historic District, #s 9-12



#s 14 - 19

27-B-41

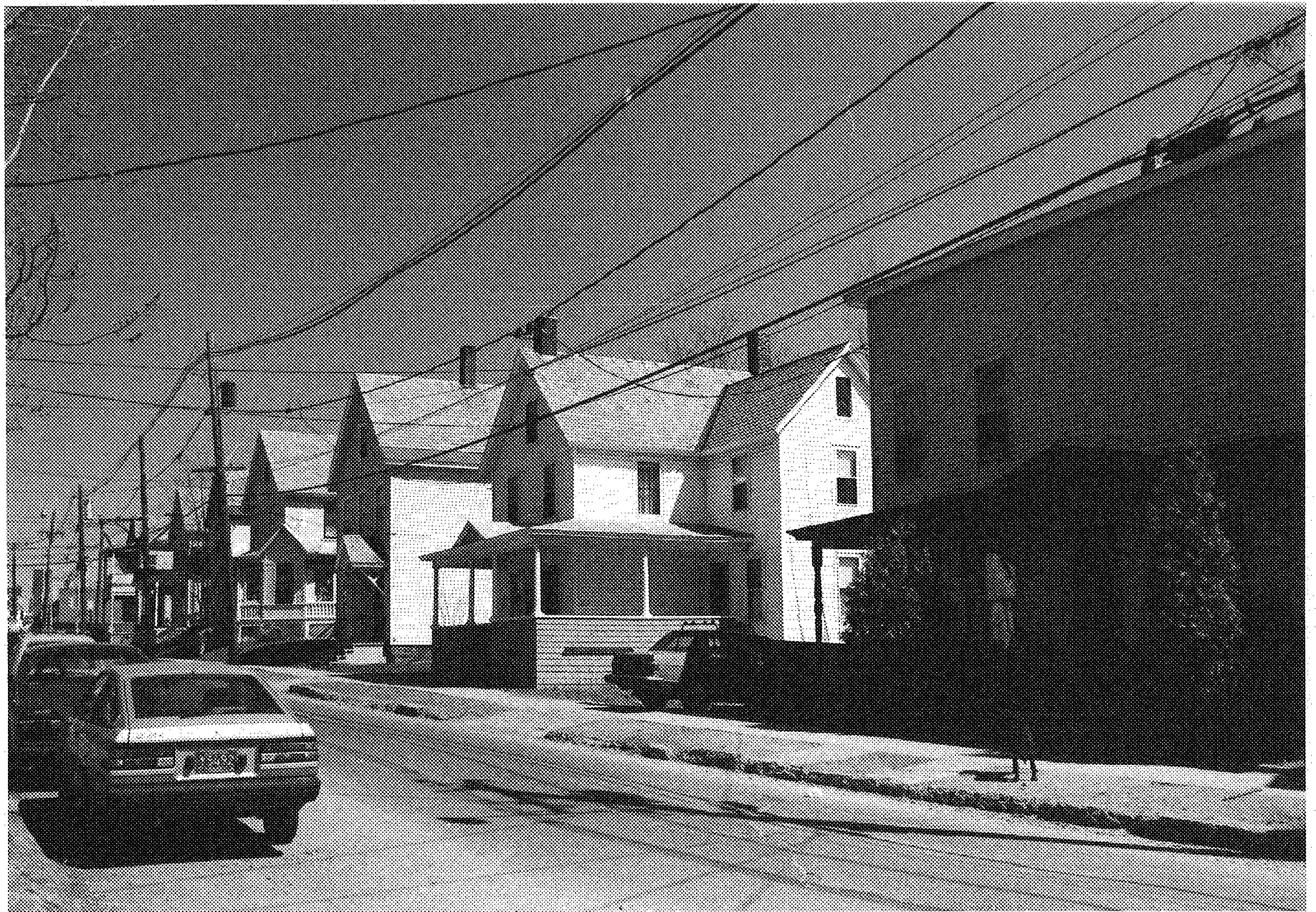
Buell St./Bradley St. Historic District, #s 14 - 19
Burlington, Chittenden County, Vermont
Negative on file at VT Division for Historic Preservation
Credit: Beth Bartz
Date: April 1987
Building #s 14 -19, South Union St., View looking NW
Photo 5



#s 29 - 35

87-1241

Buell St./Bradley St. Historic District, #s 29 - 35
Burlington, Chittenden County, Vermont
Negative on file at VT Division for Historic Preservation
Credit: Beth Bartz
Date: April 1987
Building #s 29 - 35, South Union St., View looking SE
Photo 6



#s 38 - 43

87-41

Buell St./Bradley St. Historic District, #s 38 - 43
Burlington, Chittenden County, Vermont
Negative on file at VT Division for Historic Preservation
Credit: Beth Bartz
Date: April 1987
Building #s 38 -43, South Union St., View looking NE
Photo 7



#s 62 - 64

87-7-4

Buell St./Bradley St. HISTORIC DISTRICT, #S 62 - 64
Burlington, Chittenden County, Vermont
Negative on file at VT Division for Historic Preservation
Credit: Beth Bartz
Date: April 1987
Building #s 62 -64, Buell St., view looking NE
Photo 8

Buell St./Bradley St. HISTORIC DISTRICT, #S 62 - 64



#s 35, 72-77

Buell St./Bradley St. Historic District, #s 35, 72-77
Burlington, Chittenden County, Vermont
Negative on file at VT Division for Historic Preservation
Credit: Beth Bartz
Date: April 1987
Building #s 35, 72-77, Buell St., view looking SE
Photo 9

82741

Buell St./Bradley St. Historic District #3



Buell St./Bradley St. Historic District, # 10
Burlington, Chittenden County, Vermont
Negative on file at VT Division for Historic Preservation
Credit: Dorothy Burlingame
Date: March 1987
Building #1, 19-23 Orchard Terr., view looking NW
Photo 10

87-A-30



89-0 29

Buell St./Bradley St. HISTORIC DISTRICT, # 2
Burlington, Chittenden County, Vermont
Negative on file at VT Division for Historic Preservation
Credit: Lola Bennett
Date: March 1987
Building # 2, 25 Orchard Terr., View looking W
Photo 11

Buell St./Bradley St. HISTORIC DISTRICT # 2



3

87-7-31

Buell St./Bradley St. Historic District, # 3
Burlington, Chittenden County, Vermont
Negative on file on VT Division for Historic Preservation
Credit: Beth Bartz
Date: March 1987
Building # 3, 37 Orchard Terr., view looking NW
Photo 12



17-17-27

Buell St./Bradley St. Historic District, # 4
Burlington, Chittenden County, Vermont
Negative on file on VT Division for Historic Preservation
Credit: Reid Larson
Date: March 1987
Building # 4, 24-26 Buell St., view looking NW
Photo 13



#s 4 - 23

87-A-26

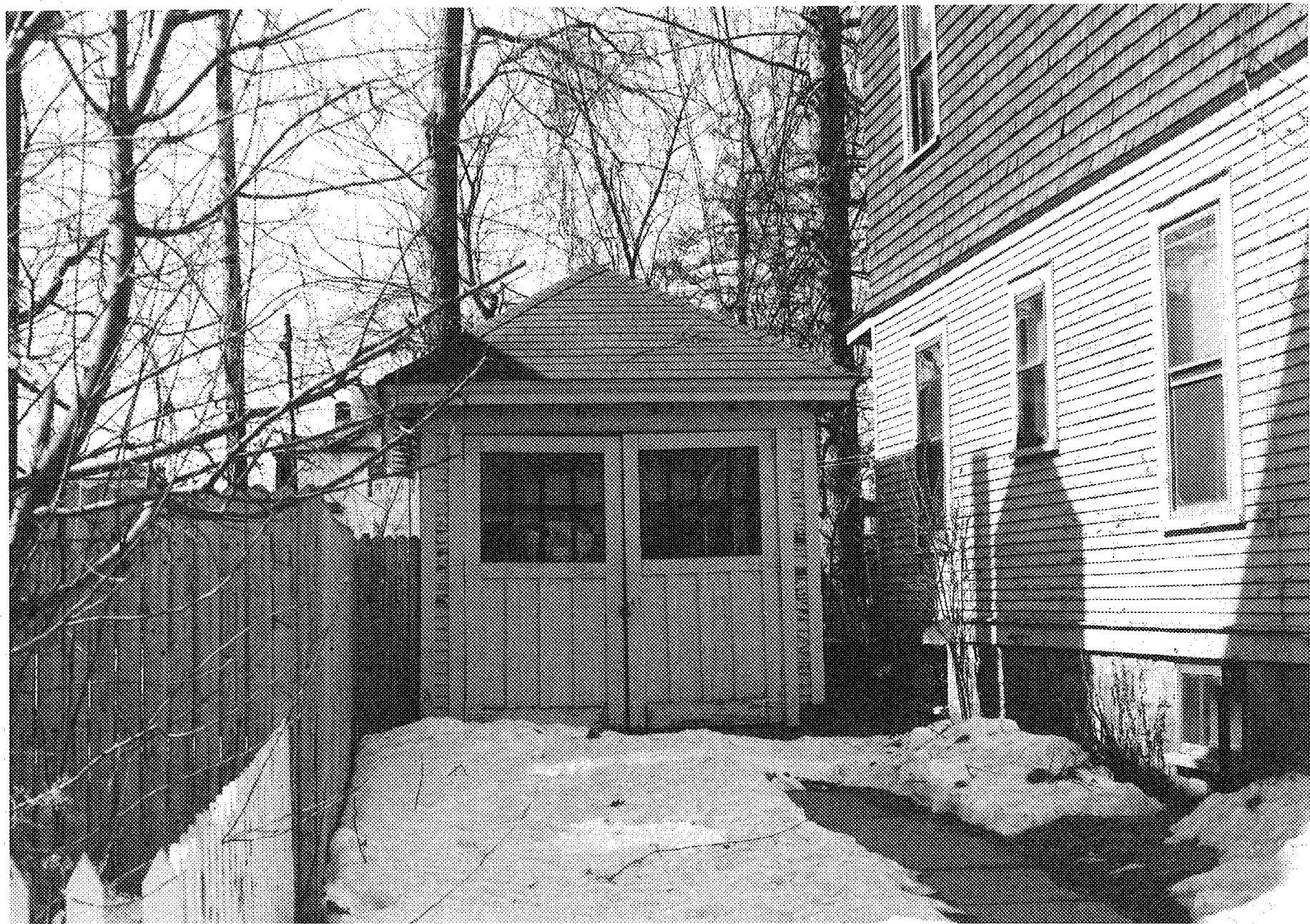
Buell St./Bradley St. Historic District, #s 4 - 23
Burlington, Chittenden County, Vermont
Negative on file on VT Division for Historic Preservation
Credit: Reid Larson
Date: March 1987
Building #s 4 - 23, Buell St., view looking NW
Photo 14



5

87-7 26

Buell St./Bradley St. Historic District, # 5
Burlington, Chittenden County, Vermont
Negative on file on VT Division for Historic Preservation
Credit: Reid Larson
Date: March 1987
Building # 5, 69 Orchard Terrace, view looking SW
Photo 15



5A

87-A-28

Buell St./Bradley St. Historic District, # 5A
Burlington, Chittenden County, Vermont
Negative on file on VT Division for Historic Preservation
Credit: Lola Bennett
Date: March 1987
Building # 5A, 69 Orchard Terrace, view looking W
Photo 16

BUELL ST. / BRADLEY ST. HISTORIC DISTRICT # 5A



Buell St./Bradley St. Historic District, # 6
Burlington, Chittenden County, Vermont
Negative on file on VT Division for Historic Preservation
Credit: Lola Bennett
Date: March 1987
Building # 6, 75 Orchard Terrace, view looking W
Photo 17

87-A-8



7

7

c. 1900

33 BOELL

Buell St./Bradley St. Historic District, # 7
Burlington, Chittenden County, Vermont
Negative on file on VT Division for Historic Preservation
Credit: David Tansey
Date: March 1987
Building # 7, 33 Buell St., view looking SE
Photo 18

87-A-23



87A31

Buell St./Bradley St. Historic District, # 8
Burlington, Chittenden County, Vermont
Negative on file on VT Division for Historic Preservation
Credit: Beth Bartz
Date: March 1987
Building # 8, 34 Buell St., view looking NE
Photo 19



89A.29

Buell St./Bradley St. Historic District, # 9
Burlington, Chittenden County, Vermont
Negative on file on VT Division for Historic Preservation
Credit: Lola Bennett
Date: March 1987
Building # 9, 38 Orchard Terrace, View looking S
Photo 20



10

82-41

Buell St./Bradley St. Historic District, # 10
Burlington, Chittenden County, Vermont
Negative on file on VT Division for Historic Preservation
Credit: Beth Bartz
Date: April 1987
Building # 10, 32 Orchard Terrace, view looking SE
Photo 21



11

87-A-30

Buell St./Bradley St. Historic District, # 11
Burlington, Chittenden County, Vermont
Negative on file on VT Division for Historic Preservation
Credit: Dorothy Burlingame
Date: March 1987
Building # 11, 24 Orchard Terrace, view looking SE
Photo 22



12

87-A-23

Buell St./Bradley St. Historic District, # 12
Burlington, Chittenden County, Vermont
Negative on file on VT Division for Historic Preservation
Credit: David Tansey
Date: March 1987
Building # 12, 22 Orchard Terrace, view looking E
Photo 23



13

87-A-24

Buell St./Bradley St. Historic District, # 13
Burlington, Chittenden County, Vermont
Negative on file on VT Division for Historic Preservation
Credit: Gary Bressor
Date: March 1987
Building # 13, 16 Orchard Terrace, view looking SE
Photo 24



#14

Buell St./Bradley St. Historic District, # 14
Burlington, Chittenden County, Vermont
Negative on file on VT Division for Historic Preservation
Credit: Gary Bressor
Date: March 1987
Building # 14, 9 South Union St., view looking SW
Photo 25

82-17-25



Buell St./Bradley St. Historic District, # 15
Burlington, Chittenden County, Vermont
Negative on file on VT Division for Historic Preservation
Credit: Beth Bartz
Date: April 1987
Building # 15, 11 South Union St., view looking NW
Photo 26

87-A-41



87-12-17

Buell St./Bradley St. Historic District, # 16
Burlington, Chittenden County, Vermont
Negative on file on VT Division for Historic Preservation
Credit: Lola Bennett
Date: March 1987
Building # 16, 17 South Union St., view looking NW
Photo 27



17

87-A-27

South Union St. Historic District, # 17
Burlington, Chittenden County, Vermont
Negative on file on VT Division for Historic Preservation
Credit: Reid Larson
Date: March 1987
Building #17, 21 South Union St., view looking NW
Photo 28



22 - 18

S. UNION

87-A-23

Buell St./Bradley St. Historic District, #s 22 - 18
Burlington, Chittenden County, Vermont
Negative on file on VT Division for Historic Preservation
Credit: David Tansey
Date: March 1987
Building #22 - 18, South Union St. streetscape, view looking
NW
Photo 29



87-26

Buell St./Bradley St. Historic District, # 18
Burlington, Chittenden County, Vermont
Negative on file on VT Division for Historic Preservation
Credit: Reid Larson
Date: March 1987
Building # 18, 25 South Union St., view looking SW
Photo 30

VT Division for Historic Preservation



82A.23

Buell St./Bradley St. Historic District, # 19
Burlington, Chittenden County, Vermont
Negative on file on VT Division for Historic Preservation
Credit: David Tansey
Date: March 1987
Building #19, 32 South Union St., view looking NW
Photo 31



20

87A-25

Buell St./Bradley St. Historic District, # 20
Burlington, Chittenden County, Vermont
Negative on file on VT Division for Historic Preservation
Credit: Gary Bressor
Date: March 1987
Building #20, 35 South Union St., view looking W
Photo 32



21

87

Buell St./Bradley St. Historic District, # 21
Burlington, Chittenden County, Vermont
Negative on file on VT Division for Historic Preservation
Credit: Beth Bartz
Date: March 1987
Building #21, 39 South Union St., view looking NW
Photo 33



87-A 29

Buell St./Bradley St. Historic District, #22
Burlington, Chittenden County, Vermont
Negative on file on VT Division for Historic Preservation
Credit: Lola Bennett
Date: March 1987
Building #22, 43 South Union St., view looking NW
Photo 34



23

87-A-25

Buell St./Bradley St. Historic District, #23
Burlington, Chittenden County, Vermont
Negative on file on VT Division for Historic Preservation
Credit: Gary Bressor
Date: March 1987
Building # 23, 36 Buell St., view looking N
Photo 35



24

87-A-50

Buell St./Bradley St. Historic District, #24
Burlington, Chittenden County, Vermont
Negative on file on VT Division for Historic Preservation
Credit: Dorothy Burlingame
Date: March 1987
Building #24, 37 Buell St., view looking SE
Photo 36



26

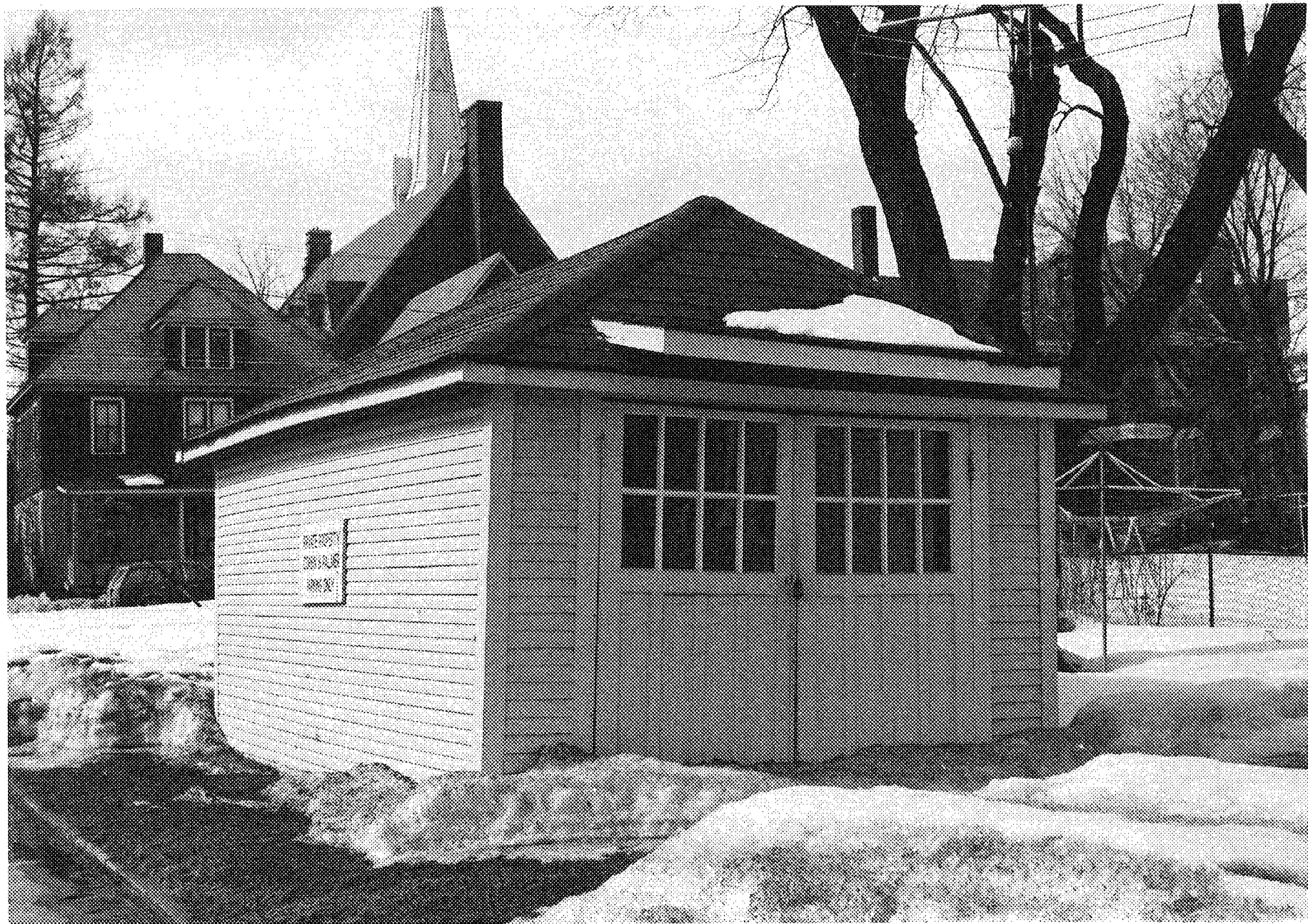
Buell St./Bradley St. Historic District, #26
Burlington, Chittenden County, Vermont
Negative on file on VT Division for Historic Preservation
Credit: Reid Larson
Date: March 1987
Building #26, 61 South Union St., view looking NW
Photo 37

87A-24



Buell St./Bradley St. Historic District, # 27
Burlington, Chittenden County, Vermont
Negative on file on VT Division for Historic Preservation
Credit: Lola Bennett
Date: March 1987
Building #27, 67 South Union St., view looking NW
Photo 38

87-17-29



27A

87-A-29

Buell St./Bradley St. Historic District, # 27A
Burlington, Chittenden County, Vermont
Negative on file on VT Division for Historic Preservation
Credit: Lola Bennett
Date: March 1987
Building #27A, 67 South Union St., view looking W
Photo 39



87-A-41

Buell St./Bradley St. Historic District, # 28
Burlington, Chittenden County, Vermont
Negative on file on VT Division for Historic Preservation
Credit: Beth Bartz
Date: April 1987
Building # 28, 71 South Union St., view looking SW
Photo 40



87-A-24

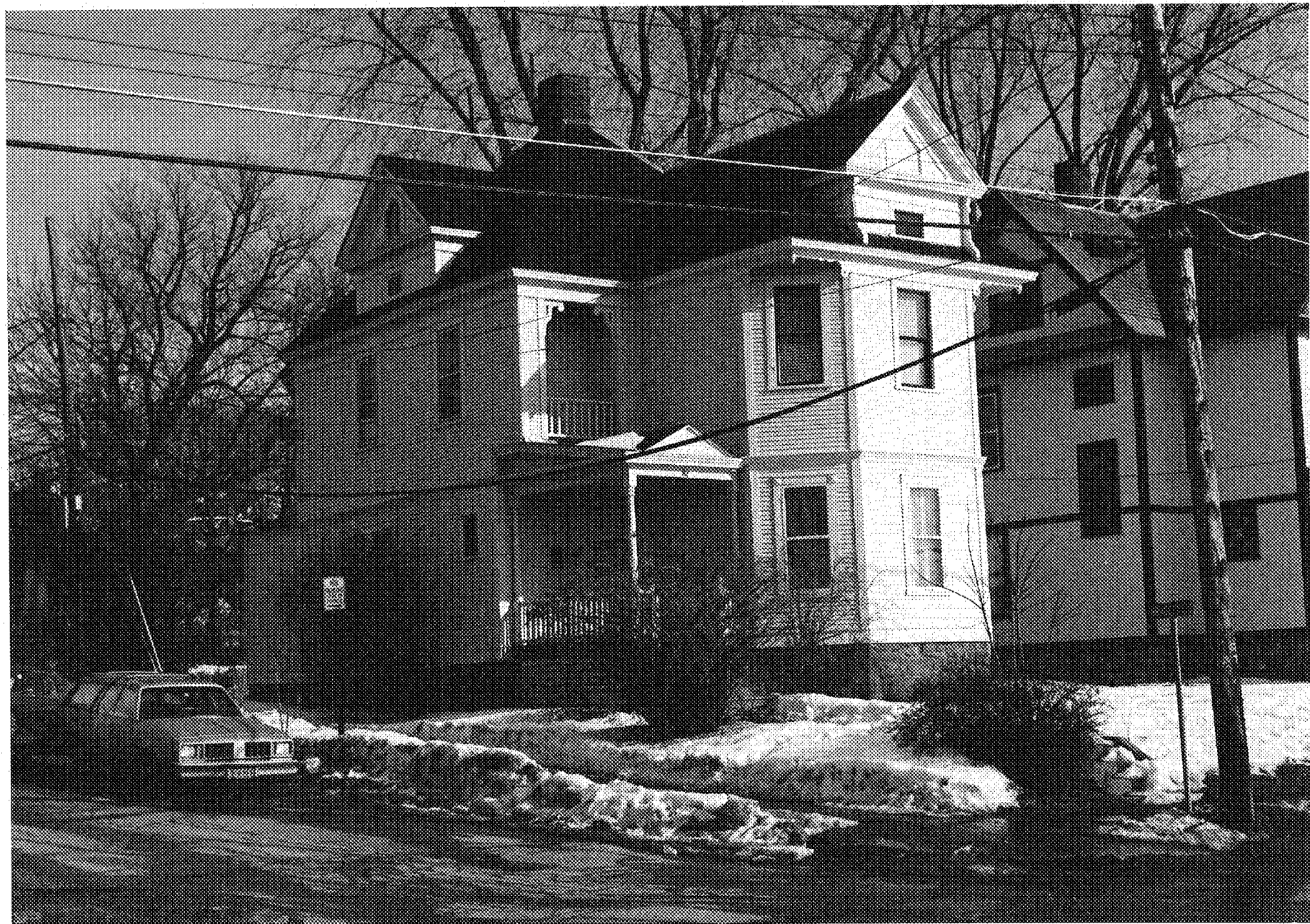
Buell St./Bradley St. Historic District, # 29
Burlington, Chittenden County, Vermont
Negative on file on VT Division for Historic Preservation
Credit: Gary Bressor
Date: March 1987
Building #29, 96 South Union St., view looking SE
Photo 41



30
#30 (88 S. Union)

87-A-23

Buell St./Bradley St. Historic District, # 30
Burlington, Chittenden County, Vermont
Negative on file on VT Division for Historic Preservation
Credit: David Tansey
Date: March 1987
Building #30, 88 South Union St., view looking NE
Photo 42



31

87-A-30

Buell St./Bradley St. Historic District, # 31
Burlington, Chittenden County, Vermont
Negative on file on VT Division for Historic Preservation
Credit: Dorothy Burlingame
Date: March 1987
Building #31, 82 South Union St., view looking SE
Photo 43



32

#32 2-4 BRADLEY

82-17-22

Buell St./Bradley St. Historic District, # 32
Burlington, Chittenden County, Vermont
Negative on file on VT Division for Historic Preservation
Credit: David Tansey
Date: March 1987
Building #32, 2 - 4 Bradley St., view looking NE
Photo 44



33

Buell St./Bradley St. Historic District, # 33
Burlington, Chittenden County, Vermont
Negative on file on VT Division for Historic Preservation
Credit: Reid Larson
Date: March 1987
Building #33, 66-68 South Union St., view looking SE
Photo 45

817-27



Buell St./Bradley St. Historic District, # 34
Burlington, Chittenden County, Vermont
Negative on file on VT Division for Historic Preservation
Credit: Lola Bennett
Date: March 1987
Building #34, 62 South Union St., view looking E
Photo 46

87-A-29



87-A 31

Buell St./Bradley St. Historic District, # 35
Burlington, Chittenden County, Vermont
Negative on file on VT Division for Historic Preservation
Credit: Beth Bartz
Date: March 1987
Building #35, 56 South Union St., view looking SE
Photo 47



NO
LEFT
TURN

87-A-25

Buell St./Bradley St. Historic District, # 36
Burlington, Chittenden County, Vermont
Negative on file on VT Division for Historic Preservation
Credit: Gary Bressor
Date: March 1987
Building #36, 54 Buell St., view looking NE
Photo 48



87A-23

Buell St./Bradley St. Historic District, # 36
Burlington, Chittenden County, Vermont
Negative on file on VT Division for Historic Preservation
Credit: David Tansey
Date: March 1987
Building #36, 36-38 South Union St., view looking NE
Photo 49



#s 36 - 49

87-17-46

Buell St./Bradley St. Historic District, #s 36 - 49
Burlington, Chittenden County, Vermont
Negative on file on VT Division for Historic Preservation
Credit: Reid Larson
Date: March 1987
Building #s 36 - 49, Buell St. streetscape, view looking NE
Photo 50



87-A-25

Buell St./Bradley St. Historic District, #38
Burlington, Chittenden County, Vermont
Negative on file at VT Division for Historic Preservation
Credit: Gary Bressor
Date: March 1987
Building #38, 32 - 34 South Union St., view looking NE
Photo 51



87-A-31

Buell St./Bradley St. Historic District, # 39
Burlington, Chittenden County, Vermont
Negative on file at VT Division for Historic Preservation
Credit: Beth Bartz
Date: March 1987
Building #39, 26 South Union St., view looking NE
Photo 52



40

89-11-29

Buell St./Bradley St. Historic District, # 40
Burlington, Chittenden County, Vermont
Negative on file at VT Division for Historic Preservation
Credit: Lola Bennett
Date: March 1987
Building #40, 22 South Union St., view looking E
Photo 53



A-42-41

Buell St./Bradley St. Historic District, 41
Burlington, Chittenden County, Vermont
Negative on file at VT Division for Historic Preservation
Credit: Beth Bartz
Date: April 1987
Building #41, 14 South Union St., view looking NE
Photo 54



42

87A 50

Buell St./Bradley St. Historic District, # 42
Burlington, Chittenden County, Vermont
Negative on file at VT Division for Historic Preservation
Credit: Dorothy Burlingame
Date: March 1987
Building #42, 12 South Union St., view looking SE
Photo 55



43

87-A-23

Buell St./Bradley St. Historic District, # 43
Burlington, Chittenden County, Vermont
Negative on file at VT Division for Historic Preservation
Credit: David Tansey
Date: March 1987
Building #43, 8 South Union St., view looking NE
Photo 56



44

87A731

Buell St./Bradley St. Historic District, # 44
Burlington, Chittenden County, Vermont
Negative on file at VT Division for Historic Preservation
Credit: Beth Bartz
Date: March 1987
Building #44, 58 - 60 Buell St., view looking NE
Photo 57

BUELL ST./BRADLEY ST. HISTORIC DISTRICT #44



87-A-29

Buell St./Bradley St. Historic District, # 45
Burlington, Chittenden County, Vermont
Negative on file at VT Division for Historic Preservation
Credit: Lola Bennett
Date: March 1987
Building #45, 62 - 64 Buell St., view looking N
Photo 58

Buell St./Bradley St. Historic District, # 45



Buell St./Bradley St. HISTORIC DISTRICT, # 46
Burlington, Chittenden County, Vermont
Negative on file at VT Division for Historic Preservation
Credit: Reid Larson
Date: March 1987
Building # 46, 66-68 Buell St., view looking NW
Photo 59

87A-2

Buell St./Bradley St. HISTORIC DISTRICT, # 46



87-17 30

Buell St./Bradley St. Historic District, # 4/
Burlington, Chittenden County, Vermont
Negative on file at VT Division for Historic Preservation
Credit: Dorothy Burlingame
Date: March 1987
Building # 47, 70 - 72 Buell St., view looking NE
Photo 60

Buell St./Bradley St. Historic District, # 4/



#s 47 - 48

87-A-23

BUELL ST./BRADLEY ST. HISTORIC DISTRICT, #S 47 - 48
Burlington, Chittenden County, Vermont
Negative on file at VT Division for Historic Preservation
Credit: David Tansey
Date: March 1987
Building #s 47 - 48, Buell St. streetscape, view looking W
Photo 61

BUELL ST./BRADLEY ST. HISTORIC DISTRICT # 48



48

#48 74 Buell

87-7-23

BUELL ST./BRADLEY ST. HISTORIC DISTRICT, # 48
Burlington, Chittenden County, Vermont
Negative on file at VT Division for Historic Preservation
Credit: David Tansey
Date: March 1987
Building #48, 74 Buell St., view looking SE
Photo 62

BUELL ST./BRADLEY ST. HISTORIC DISTRICT, # 50



49

82-4-5

Buell St./Bradley St. HISTORIC DISTRICT, # 49
Burlington, Chittenden County, Vermont
Negative on file at VT Division for Historic Preservation
Credit: Gary Bressor
Date: March 1987
Building #49, 84-86 Buell St., view looking NE
Photo 63

Buell St./Bradley St. HISTORIC DISTRICT, # 49



87A 31

BUELL ST./BRADLEY ST. HISTORIC DISTRICT, # 50
Burlington, Chittenden County, Vermont
Negative on file at VT Division for Historic Preservation
Credit: Beth Bartz
Date: March 1987
Building #50, 88 Buell St., view looking NW
Photo 64

BUELL ST./BRADLEY ST. HISTORIC DISTRICT, # 50



82-1-1

Buell St./Bradley St. Historic District, # 51
Burlington, Chittenden County, Vermont
Negative on file at VT Division for Historic Preservation
Credit: Lola Bennett
Date: March 1987
Building #51, 96 Buell St., view looking NE
Photo 65

Buell St./Bradley St. Historic District # 51



52

87-P-41

Buell St./Bradley St. Historic District, # 52
Burlington, Chittenden County, Vermont
Negative on file at VT Division for Historic Preservation
Credit: Beth Bartz
Date: April 1987
Building #52, 100 Buell St., view looking NE
Photo 66

Buell St./Bradley St. Historic District # 54



53

87A-24

Buell St./Bradley St. Historic District, # 53
Burlington, Chittenden County, Vermont
Negative on file at VT Division for Historic Preservation
Credit: Gary Bressor
Date: March 1987
Building #53, 37 Hungerford Terrace, view looking NW
Photo 67



54

Green St./Bradley St. Historic District, # 54
Burlington, Chittenden County, Vermont
Negative on file at VT Division for Historic Preservation
Credit: David Tansey
Date: March 1987
Building #54, 31 Hungerford Terrace, view looking SW
Photo 68

Green St./Bradley St. Historic District # 54

87-A-23



56

87-7-30

Buell St./Bradley St. Historic District, # 56
Burlington, Chittenden County, Vermont
Negative on file at VT Division for Historic Preservation
Credit: Reid Larson
Date: March 1987
Building # 56, 21 Hungerford Terrace, view looking NW
Photo 69



87-7-26

Queen St./Bradley St. Historic District, # 50
Burlington, Chittenden County, Vermont
Negative on file at VT Division for Historic Preservation
Credit: Lola Bennett
Date: March 1987
Building # 58, 20 Hungerford Terrace, view looking E
Photo 70



58

87-19-39

Buell St./Bradley St. Historic District, # 58
Burlington, Chittenden County, Vermont
Negative on file at VT Division for Historic Preservation
Credit: Lola Bennett
Date: March 1987
Building #58, 20 Hungerford Terrace, view looking E
Photo 71

Buell St./Bradley St. Historic District, # 58



58A

87-A-29

Buell St./Bradley St. Historic District, # 58A
Burlington, Chittenden County, Vermont
Negative on file at VT Division for Historic Preservation
Credit: Lola Bennett
Date: March 1987
Building # 58A, 20 Hungerford Terrace, view looking E
Photo 72

Buell St./Bradley St. Historic District, # 58A



#s 58 - 61

87-17-26

Buell St./Bradley St. Historic District, #s 58 - 61

Burlington, Chittenden County, Vermont

Negative on file at VT Division for Historic Preservation

Credit: Reid Larson

Date: March 1987

Building #s 58 - 61, Hungerford Terr. streetscape, view looking
NE

Photo 73



59

87-A-31

Buell St./Bradley St. Historic District, # 59
Burlington, Chittenden County, Vermont
Negative on file at VT Division for Historic Preservation
Credit: Beth Bartz
Date: March 1987
Building #59, 24 Hungerford Terrace, view looking NE
Photo 74



#s 59 - 61

87A-30

Buell St./Bradley St. Historic District, #s 59 - 61
Burlington, Chittenden County, Vermont
Negative on file at VT Division for Historic Preservation
Credit: Dorothy Burlingame
Date: March 1987
Building #s 59 - 61, Hungerford Terr. streetscape, view looking
SE
Photo 75



827-24

Buell St./Bradley St. Historic District, # 60
Burlington, Chittenden County, Vermont
Negative on file at VT Division for Historic Preservation
Credit: Gary Bressor
Date: March 1987
Building #60, 28 Hungerford Terrace, view looking NE
Photo 76

Buell St./Bradley St. Historic District, # 60



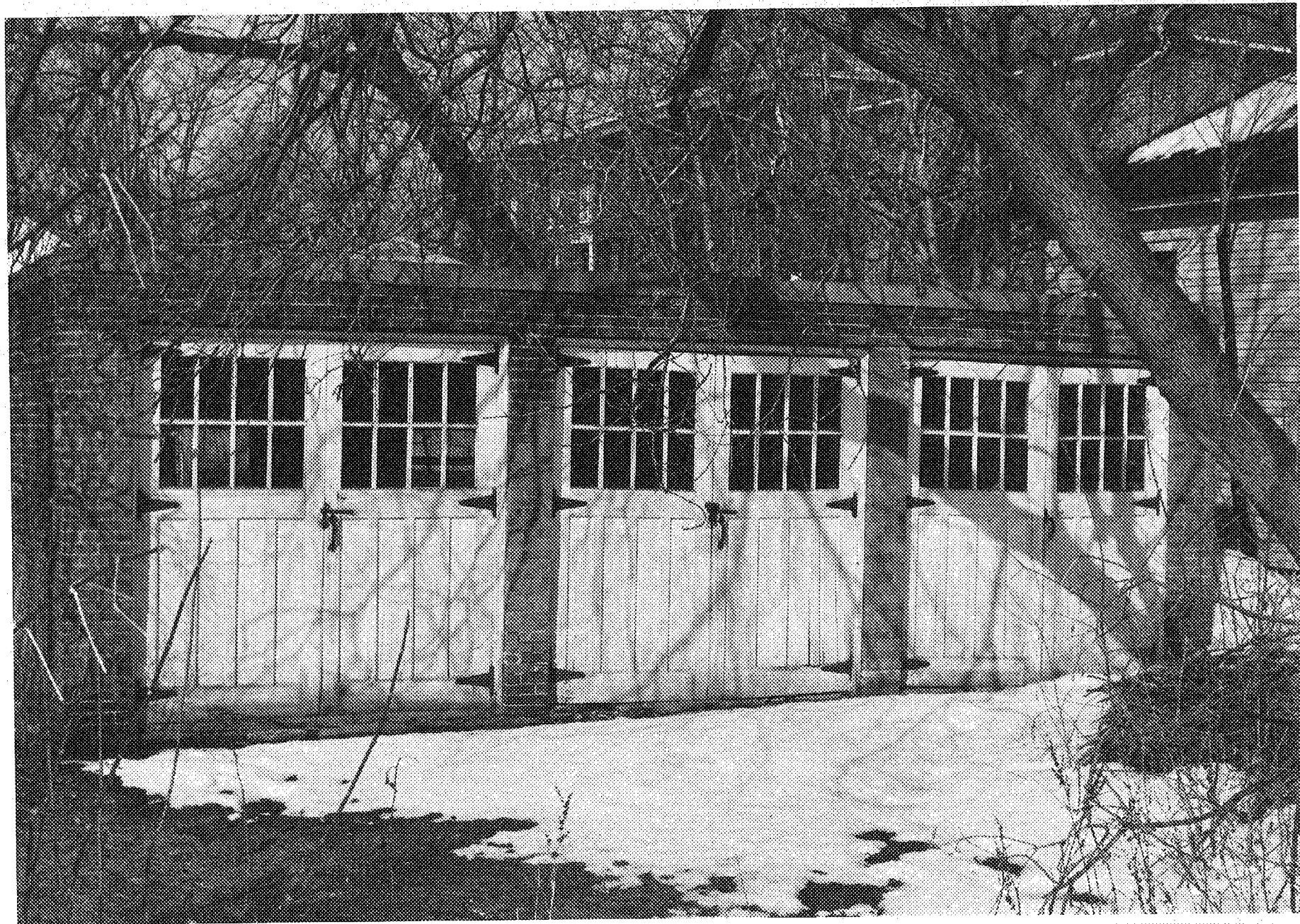
61

#61 32 HUNTER
FIELD

87-A-23

Buell St./Bradley St. Historic District, # 61
Burlington, Chittenden County, Vermont
Negative on file at VT Division for Historic Preservation
Credit: David Tansey
Date: March 1987
Building #61, 32 Hungerford Terrace, view looking NE
Photo 77

Buell St./Bradley St. Historic District, # 61



61A

#61A 32 HUNTER-
FORD

87-12-23

Buell St./Bradley St. Historic District, # 61A
Burlington, Chittenden County, Vermont
Negative on file at VT Division for Historic Preservation
Credit: David Tansey
Date: March 1987
Building # 61A, 32 Hungerford Terrace, view looking N
Photo 78

Buell St./Bradley St. Historic District, # 61A



62

87-A-31

Buell St./Bradley St. HISTORIC DISTRICT, # 62
Burlington, Chittenden County, Vermont
Negative on file at VT Division for Historic Preservation
Credit: Beth Bartz
Date: March 1987
Building # 62, 108 Buell St., view looking NE
Photo 79

Buell St./Bradley St. HISTORIC DISTRICT, # 62



Buell St./Bradley St. Historic District, # 63
Burlington, Chittenden County, Vermont
Negative on file at VT Division for Historic Preservation
Credit: Lola Bennett
Date: March 1987
Building #63, 114 Buell St., view looking NE
Photo 80

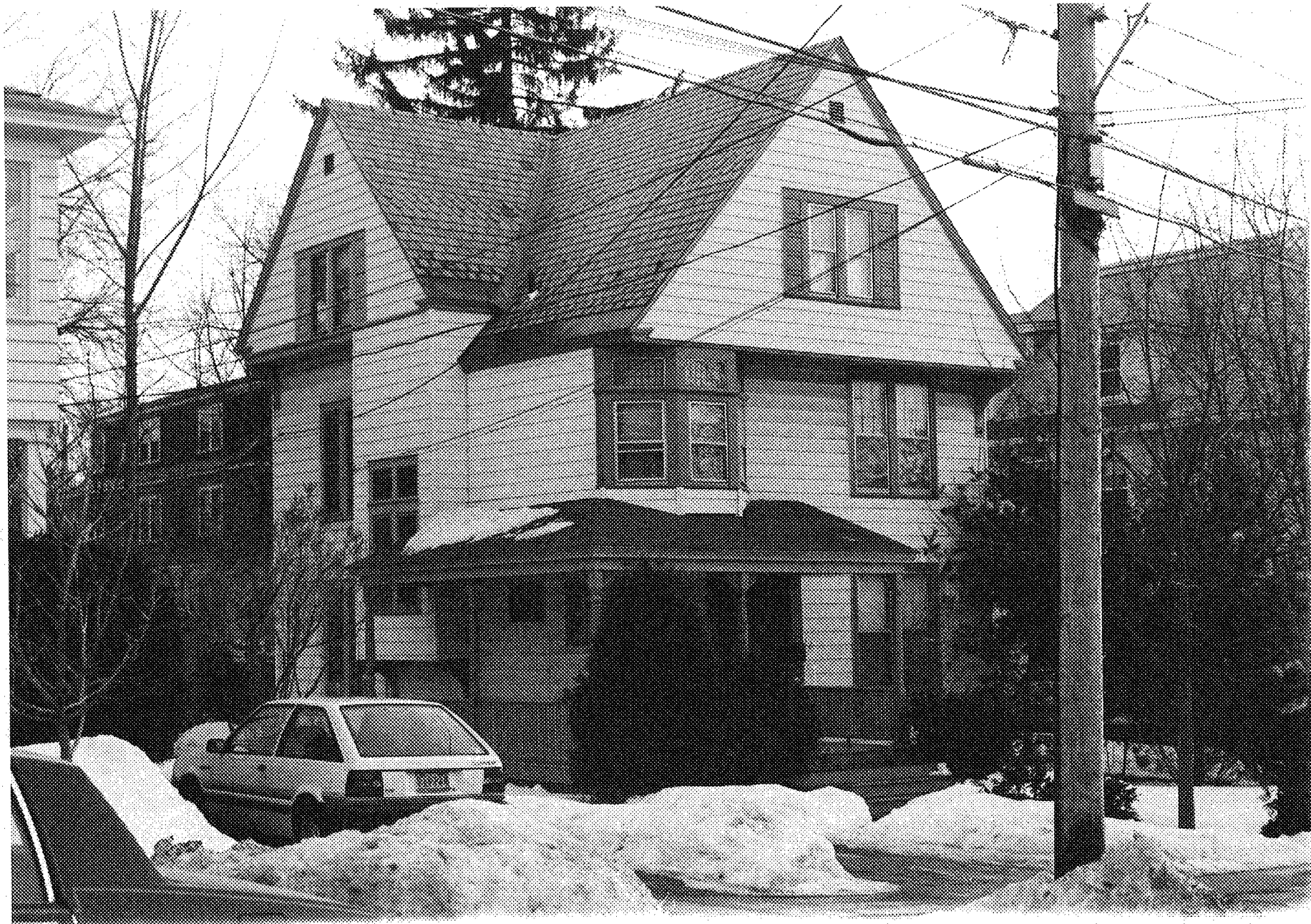
82-11-114



64

87-A-41

Buell St./Bradley St. Historic District, # 64
Burlington, Chittenden County, Vermont
Negative on file at VT Division for Historic Preservation
Credit: Beth Bartz
Date: April 1987
Building #64, 120-122 Buell St., view looking NE
Photo 81



66

87-17-33

BUELL ST./BRADLEY ST. HISTORIC DISTRICT, # 66
Burlington, Chittenden County, Vermont
Negative on file at VT Division for Historic Preservation
Credit: David Tansey
Date: March 1987
Building # 66, 119 Buell St., view looking SW
Photo 82

Buell St./Bradley St. Historic District # 66



67

87-A-24

Buell St./Bradley St. HISTORIC DISTRICT, # 6/
Burlington, Chittenden County, Vermont
Negative on file at VT Division for Historic Preservation
Credit: Gary Bressor
Date: March 1987
Building #67, 113-115 Buell St., view looking SE
Photo 83



82-31

Buell St./Bradley St. Historic District, # 00
Burlington, Chittenden County, Vermont
Negative on file at VT Division for Historic Preservation
Credit: Beth Bartz
Date: March 1987
Building # 68, 107 - 109 Buell St., view looking SE
Photo 84



87A-30

Buell St./Bradley St. Historic District, # 69
Burlington, Chittenden County, Vermont
Negative on file at VT Division for Historic Preservation
Credit: Dorothy Burlingame
Date: March 1987
Building # 69, 97-99 Buell St., view looking SW
Photo 85



70

87A-23

Buell St./Bradley St. Historic District, # 70
Burlington, Chittenden County, Vermont
Negative on file at VT Division for Historic Preservation
Credit: David Tansey
Date: March 1987
Building # 70, 93 Buell St., view looking SE
Photo 86

Buell St./Bradley St. Historic District, # 70



70A

Buell St./Bradley St. Historic District, # 70A
Burlington, Chittenden County, Vermont
Negative on file at VT Division for Historic Preservation
Credit: David Tansey
Date: March 1987
Building # 70A, 93 Buell St., view looking S
Photo 87

87A-23



87-11-25

Buell St./Bradley St. HISTORIC DISTRICT, # 71
Burlington, Chittenden County, Vermont
Negative on file at VT Division for Historic Preservation
Credit: Gary Bressor
Date: March 1987
Building #71, 89 Buell St., view looking SW
Photo 88

Buell St./Bradley St. HISTORIC DISTRICT, # 71



72

87-4-11

Buell St./Bradley St. HISTORIC DISTRICT, # 72
Burlington, Chittenden County, Vermont
Negative on file at VT Division for Historic Preservation
Credit: Beth Bartz
Date: April 1987
Building # 72, 81 Buell St., view looking SW
Photo 89

Buell St./Bradley St. HISTORIC DISTRICT, # 72



73

87-7-29

Buell St./Bradley St. Historic District, # 73
Burlington, Chittenden County, Vermont
Negative on file at VT Division for Historic Preservation
Credit: Lola Bennett
Date: March 1987
Building #73, 77-79 Buell St., view looking SW
Photo 90

Buell St./Bradley St. Historic District, # 73



74

87-7-27

Buell St./Bradley St. Historic District, # 74
Burlington, Chittenden County, Vermont
Negative on file at VT Division for Historic Preservation
Credit: Reid Larson
Date: March 1987
Building #74, 73 Buell St., view looking SW
Photo 91



75

87-7 50

Buell St./Bradley St. Historic District, # 75
Burlington, Chittenden County, Vermont
Negative on file at VT Division for Historic Preservation
Credit: Dorothy Burlingame
Date: March 1987
Building #75, 67 Buell St., view looking SW
Photo 92

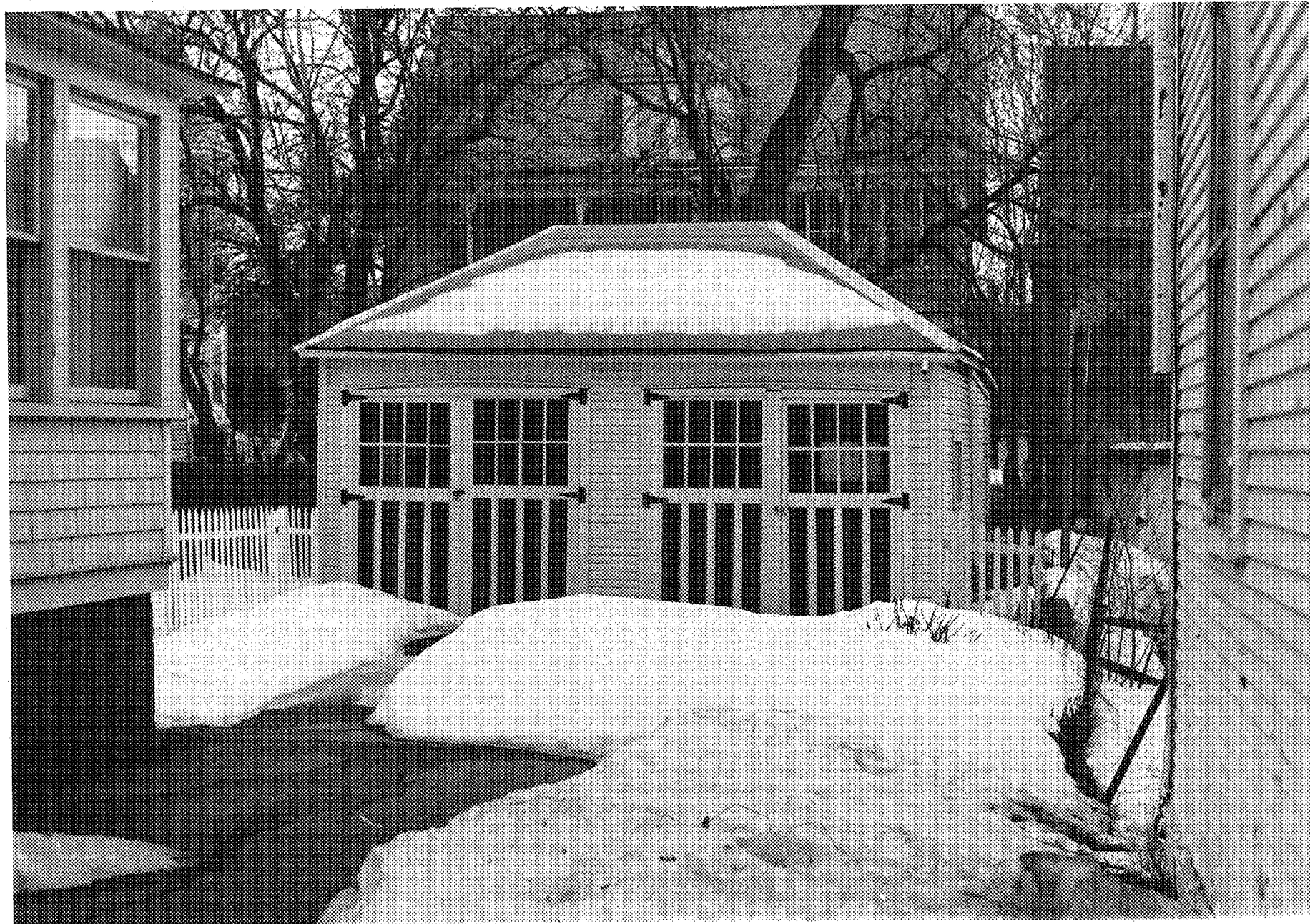


76

87-A-23

Buell St./Bradley St. HISTORIC DISTRICT, # 76
Burlington, Chittenden County, Vermont
Negative on file at VT Division for Historic Preservation
Credit: David Tansey
Date: March 1987
Building # 76, 63 Buell St., view looking SE
Photo 93

Buell St./Bradley St. HISTORIC DISTRICT, # 77



76A

87A-23

Buell St./Bradley St. Historic District, # 76A
Burlington, Chittenden County, Vermont
Negative on file at VT Division for Historic Preservation
Credit: David Tansey
Date: March 1987
Building #76A, 63 Buell St., view looking S
Photo 94

Buell St./Bradley St. Historic District, # 78



Buell St./Bradley St. Historic District, # 77
Burlington, Chittenden County, Vermont
Negative on file at VT Division for Historic Preservation
Credit: Gary Bressor
Date: March 1987
Building # 77, 57-59 Buell St., view looking SW
Photo 95

87 A-5

Buell St./Bradley St. Historic District # 70



Buell St./Bradley St. HISTORIC DISTRICT, # 70
Burlington, Chittenden County, Vermont
Negative on file at VT Division for Historic Preservation
Credit: Dorothy Burlingame
Date: March 1987
Building # 78, 6-8 Bradley St., view looking NW
Photo 96

Buell St./Bradley St. Historic District # 80

87-7-30



79

87-7-27

BRADLEY ST./BRADLEY ST. HISTORIC DISTRICT, # 79
Burlington, Chittenden County, Vermont
Negative on file at VT Division for Historic Preservation
Credit: Reid Larson
Date: March 1987
Building # 79, 12 - 14 Bradley St., view looking NW
Photo 97



87-A-28

Buell St./Bradley St. Historic District, # 80
Burlington, Chittenden County, Vermont
Negative on file at VT Division for Historic Preservation
Credit: Lola Bennett
Date: March 1987
Building #80, 18 Bradley St., view looking N
Photo 98



81

87-7-31

Buell St./Bradley St. Historic District, # 81
Burlington, Chittenden County, Vermont
Negative on file at VT Division for Historic Preservation
Credit: Beth Bartz
Date: March 1987
Building # 81, 24 Bradley St., view looking NW
Photo 99



87A 25

Buell St./Bradley St. Historic District, # 82
Burlington, Chittenden County, Vermont
Negative on file at VT Division for Historic Preservation
Credit: Gary Bressor
Date: March 1987
Building #82, 28 Bradley St., view looking N
Photo 100

Buell St./Bradley St. Historic District, # 82



87-A 30

Buell St./Bradley St. Historic District, # 84
Burlington, Chittenden County, Vermont
Negative on file at VT Division for Historic Preservation
Credit: Dorothy Burlingame
Date: March 1987
Building #84, 38 Bradley St., view looking NE
Photo 101

Buell St./Bradley St. Historic District, # 84



102

8-A 31

Buell St./Bradley St. Historic District, # 102
Burlington, Chittenden County, Vermont
Negative on file at VT Division for Historic Preservation
Credit: Beth Bartz
Date: March 1987
Building # 102, 61 Hungerford Terrace, view looking SW
Photo 102

Buell St./Bradley St. Historic District, # 102



86

87A-28

Buell St./Bradley St. Historic District, # 86
Burlington, Chittenden County, Vermont
Negative on file at VT Division for Historic Preservation
Credit: Lola Bennett
Date: March 1987
Building #86, 65 Hungerford Terrace, view looking NW
Photo 103



Buell St./Bradley St. Historic District, # 8/
Burlington, Chittenden County, Vermont
Negative on file at VT Division for Historic Preservation
Credit: Reid Larson
Date: March 1987
Building # 87, 69 Hungerford Terrace, view looking NW
Photo 104

87A-21

Buell St./Bradley St. Historic District, # 8/



87-A-30

Buell St./Bradley St. Historic District, # 88
Burlington, Chittenden County, Vermont
Negative on file at VT Division for Historic Preservation
Credit: Dorothy Burlingame
Date: March 1987
Building #88, 64-66 Hungerford Terrace, view looking NE
Photo 105

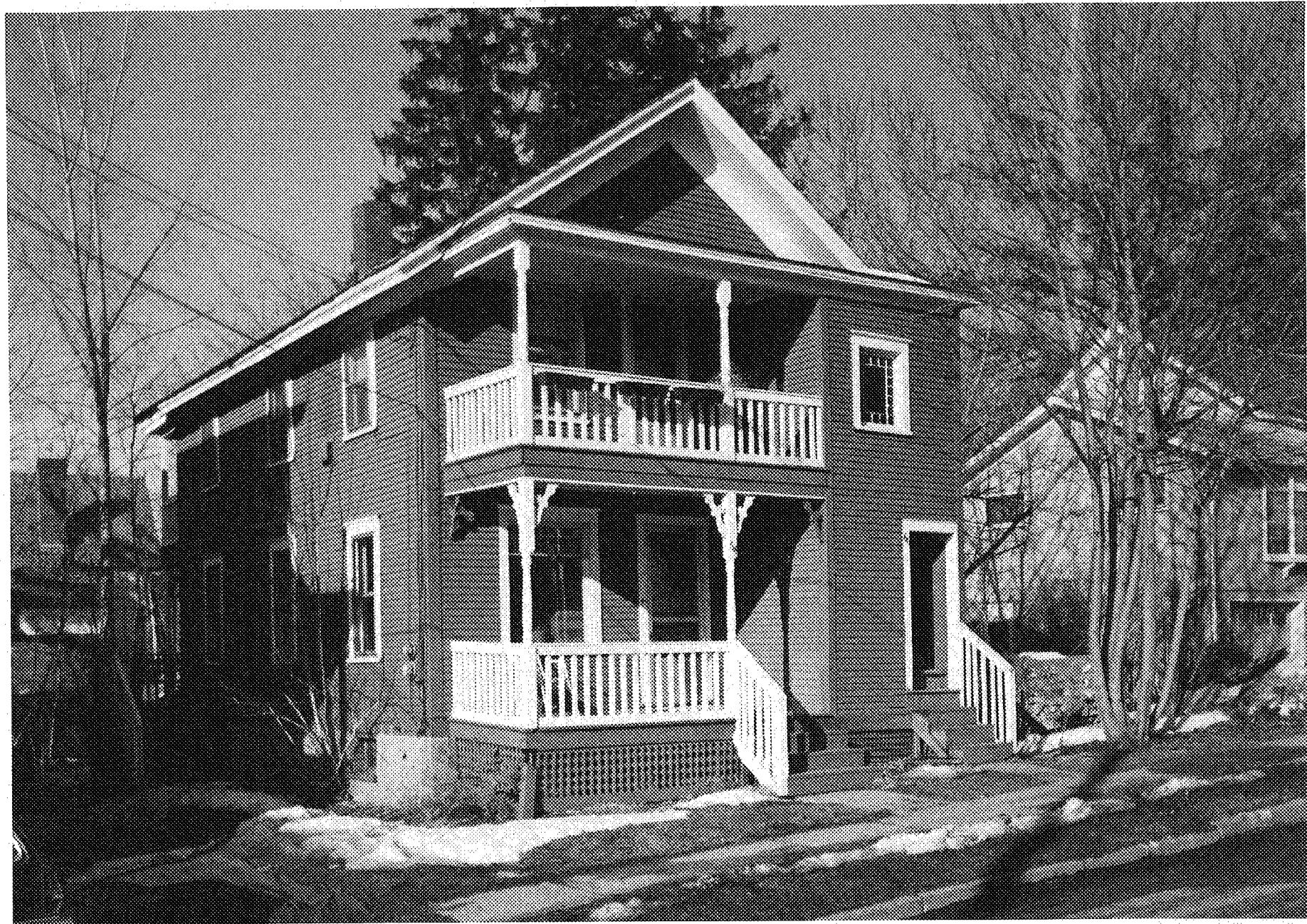


89

87-7 28

BUEL ST./BRADLEY ST. HISTORIC DISTRICT, # 89
Burlington, Chittenden County, Vermont
Negative on file at VT Division for Historic Preservation
Credit: Lola Bennett
Date: March 1987
Building #89, 60 -62 Bradley St., view looking E
Photo 106

BUEL ST./BRADLEY ST. HISTORIC DISTRICT, # 89



90

87A-21

Buell St./Bradley St. Historic District, # 90
Burlington, Chittenden County, Vermont
Negative on file at VT Division for Historic Preservation
Credit: Reid Larson
Date: March 1987
Building #90, 64-66 Bradley St., View looking NE
Photo 107

Buell St./Bradley St. Historic District, # 90



92

87-23

BUEL ST./BRADLEY ST. HISTORIC DISTRICT, # 92
Burlington, Chittenden County, Vermont
Negative on file at VT Division for Historic Preservation
Credit: David Tansey
Date: March 1987
Building # 92, 65-67 Bradley St., view looking SE
Photo 108

BUEL ST./BRADLEY ST. HISTORIC DISTRICT, # 92



93

87-R-25

Buell St./Bradley St. HISTORIC DISTRICT, # 93
Burlington, Chittenden County, Vermont
Negative on file at VT Division for Historic Preservation
Credit: Gary Bressor
Date: March 1987
Building # 93, 63 Bradley St., view looking SW
Photo 109

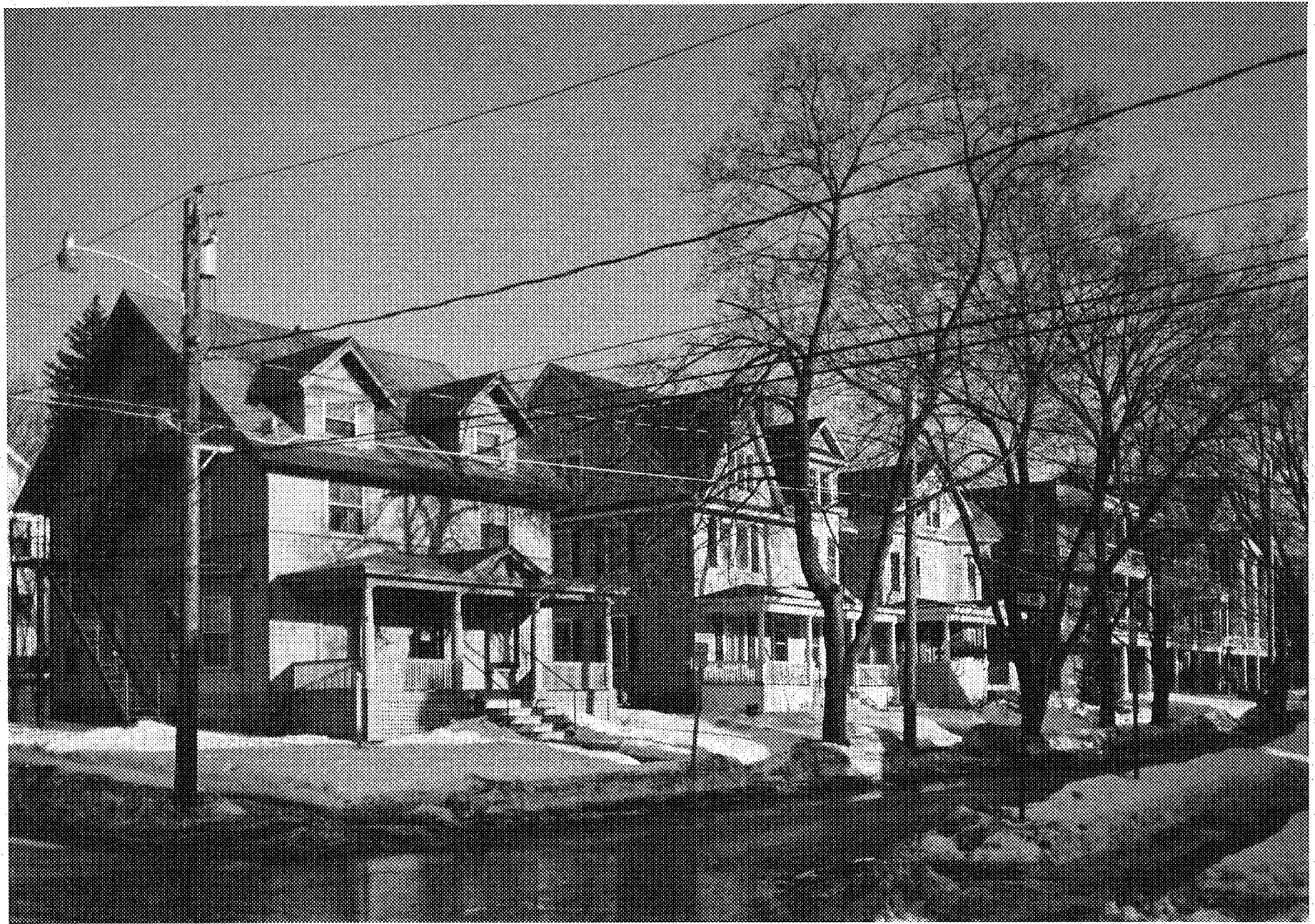
Buell St./Bradley St. HISTORIC DISTRICT, # 93



87-17-411

Duell St./Bradley St. Historic District, # 94
Burlington, Chittenden County, Vermont
Negative on file at VT Division for Historic Preservation
Credit: Beth Bartz
Date: April 1987
Building # 94, 72 Hungerford Terrace, view looking SE
Photo 110

Duell St./Bradley St. Historic District # 95



87-A-26

Buell St./Bradley St. Historic District, # 94
Burlington, Chittenden County, Vermont
Negative on file at VT Division for Historic Preservation
Credit: Reid Larson
Date: March 1987
Building #94, Hungerford Terrace streetscape, view looking SE
Photo 111



89-A-29

Duell St./Bradley St. Historic District, # 95
Burlington, Chittenden County, Vermont
Negative on file at VT Division for Historic Preservation
Credit: Lola Bennett
Date: March 1987
Building # 95, 80 Hungerford Terrace, view looking E
Photo 112



96

Buell St./Bradley St. Historic District, # 96
Burlington, Chittenden County, Vermont
Negative on file at VT Division for Historic Preservation
Credit: Beth Bartz
Date: March 1987
Building # 96, 82 Hungerford Terrace, view looking NE
Photo 113

87A-31



Buell St./Bradley St. Historic District, # 97
Burlington, Chittenden County, Vermont
Negative on file at VT Division for Historic Preservation
Credit: Beth Bartz
Date: March 1987
Building # 97, 87 Hungerford Terrace, view looking NW
Photo 114

87-751



87A-24

Buell St./Bradley St. Historic District, # 98
Burlington, Chittenden County, Vermont
Negative on file at VT Division for Historic Preservation
Credit: Gary Bressor
Date: March 1987
Building #98, 83-85 Hungerford Terrace, view looking W
Photo 115

Buell St./Bradley St. Historic District, # 98



100

87-A-30

BUELL ST./BRADLEY ST. HISTORIC DISTRICT, # 100
Burlington, Chittenden County, Vermont
Negative on file at VT Division for Historic Preservation
Credit: Dorothy Burlingame
Date: March 1987
Building # 100, 71 Hungerford Terrace, view looking NW
Photo 116



101

877-28

Buell St./Bradley St. Historic District, # 101
Burlington, Chittenden County, Vermont
Negative on file at VT Division for Historic Preservation
Credit: Lola Bennett
Date: March 1987
Building #101, 39 Bradley St., view looking SE
Photo 117