

51

20-77-42

1

Lakeside Historic District
Burlington, Vermont
Credit: Courtney Fisher
Date: May, 1980
Negative Filed at Vermont Division for
Historic Preservation
Description: 42 Conger Avenue (#51); Dwelling
Type A; View ENE
Photograph 1



53

88-A-42

Lakeside Historic District
Burlington, Vermont
Credit: Courtney Fisher
Date: May, 1980
Negative Filed at Vermont Division for
Historic Preservation
Description: 28-30 Conger Avenue (#53); Dwell-
ing Type B; View ENE
Photograph 2



80-A-42

Lakeside Historic District
Burlington, Vermont
Credit: Courtney Fisher
Date: May, 1980
Negative Filed at Vermont Division for
Historic Preservation
Description: 36-38 Conger Avenue (#48); Dwell-
ing Type D; View ENE
Photograph 3



#5

4

80-A-42

Type D

Lakeside Historic District
Burlington, Vermont

Credit: Courtney Fisher

Date: May, 1980

Negative Filed at Vermont Division for
Historic Preservation

Description: 57-59 Lakeside Avenue (#5); Dwell-
ing Type C; View SE

Photograph 4



56

5

80-7-42

Lakeside Historic District
Burlington, Vermont
Credit: Courtney Fisher
Date: May, 1980
Negative Filed at Vermont Division for
Historic Preservation
Description: 14-16 Conger Avenue (#56); Dwell-
ing Type E; View ENE
Photograph 5

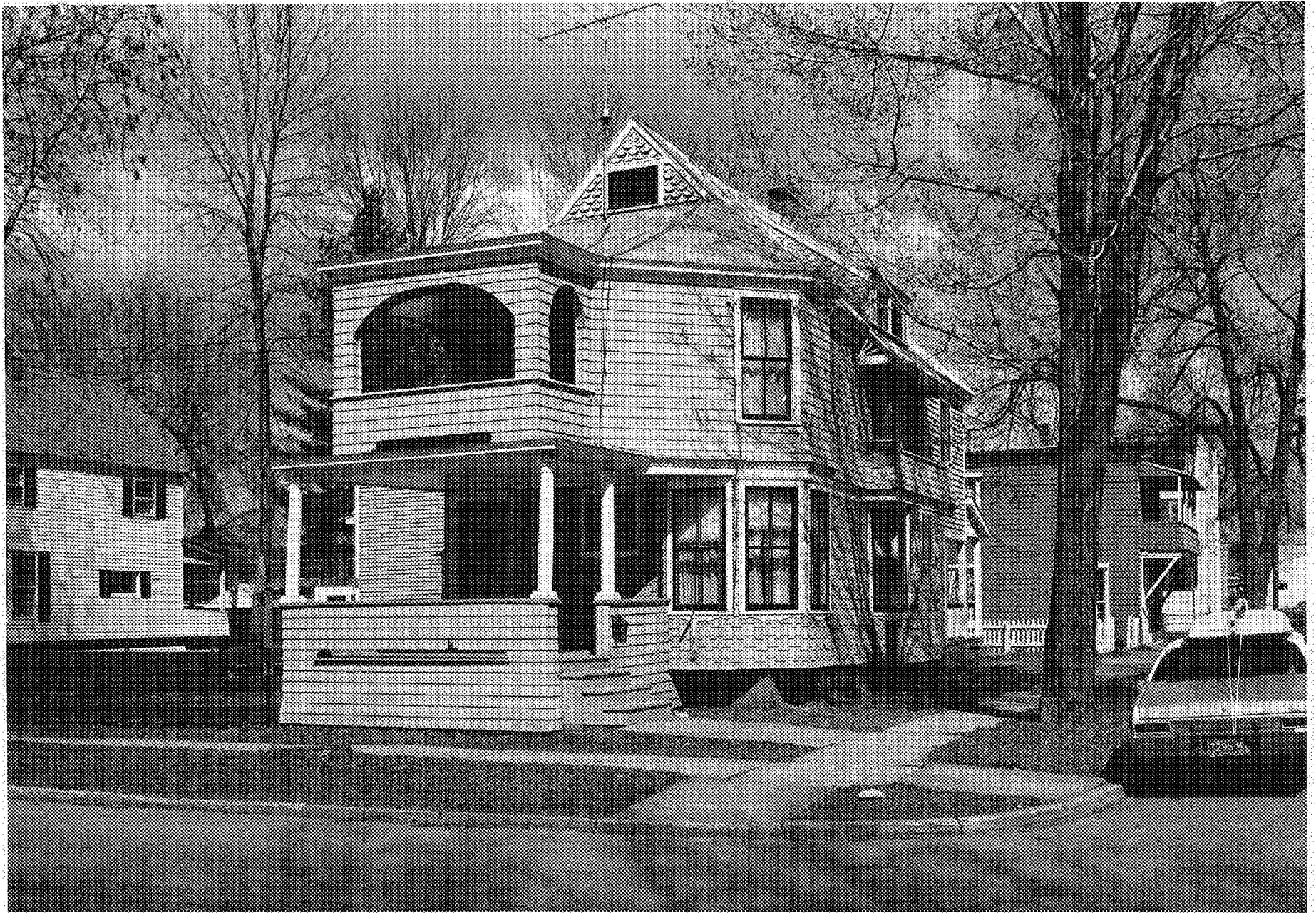


4

97-7-280

6

Lakeside Historic District
Burlington, Vermont
Credit: Clark Schoettle
Date: October, 1977
Negative Filed at Vermont Division for
Historic Preservation
Description: 63-69 Lakeside Avenue (#4);
View SE
Photograph 6



10

80-#-42

Lakeside Historic District

Burlington, Vermont

Credit: Courtney Fisher

Date: May, 1980

Negative Filed at Vermont Division for
Historic Preservation

Description: 28 Central Avenue (#10);

View ENE

Photograph 7



11

27-A-219

143

Lakeside Historic District

Burlington, Vermont

Credit: Clark Schoettle

Date: October, 1977

Negative Filed at Vermont Division for

Historic Preservation

Description: 70 Wright Avenue (#11); View NNE

Photograph 8

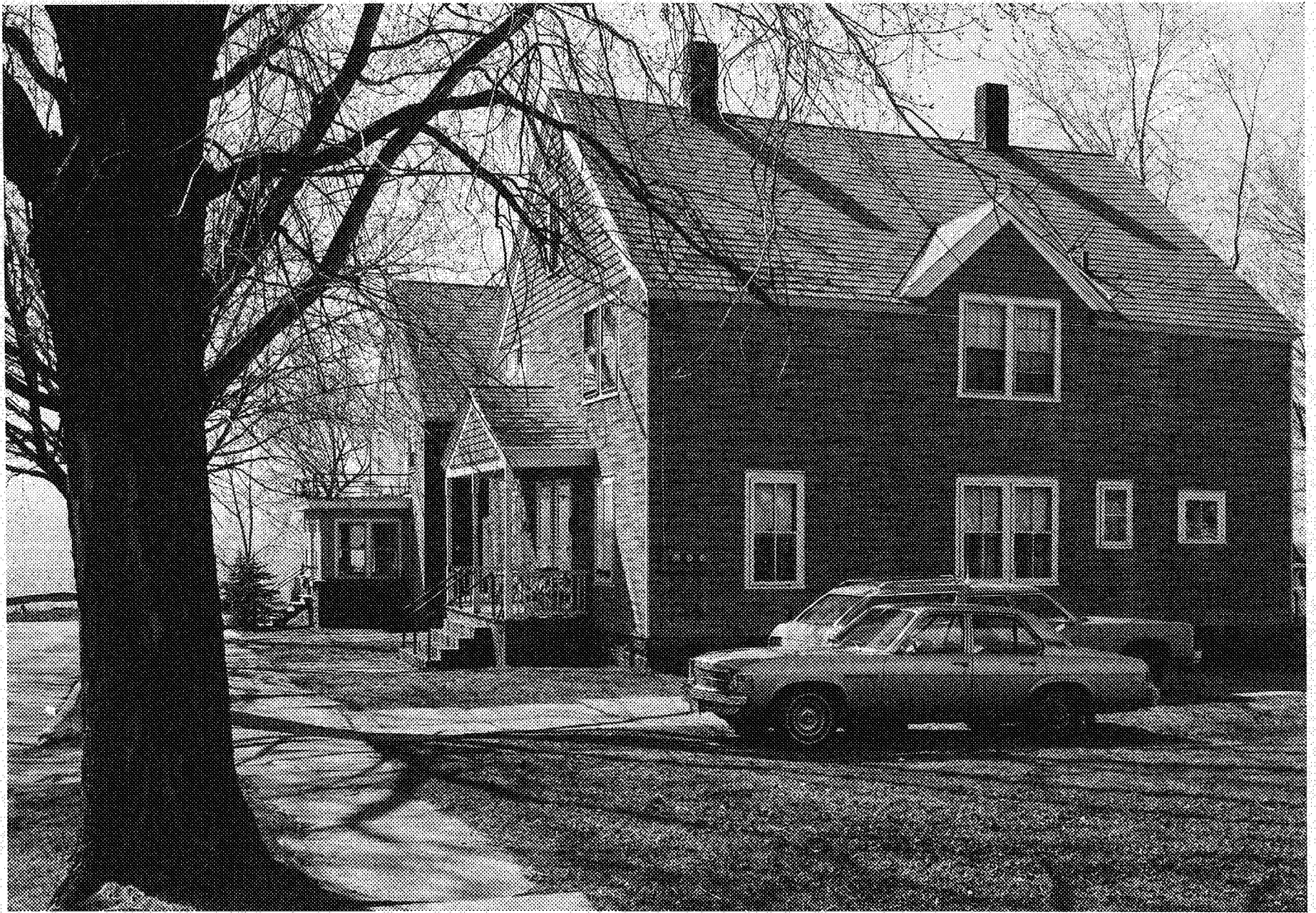


#12

77-A-279

SP

Lakeside Historic District
Burlington, Vermont
Credit: Clark Schoettle
Date: October, 1977
Negative Filed at Vermont Division for
Historic Preservation
Description: 56 Wright Avenue (#12); View NNW
Photograph 9

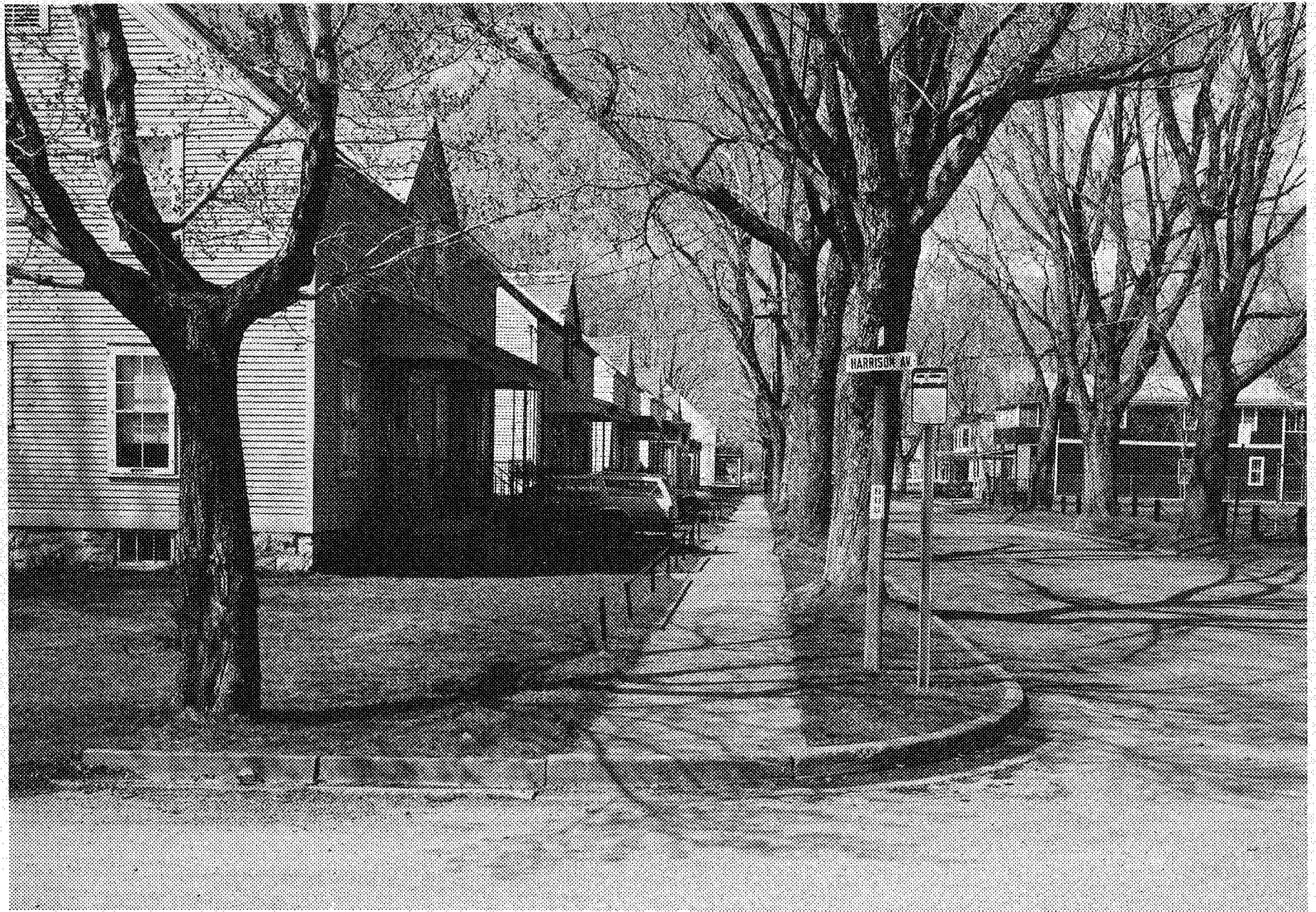


#s 14, 13

86-#42

10

Lakeside Historic District
Burlington, Vermont
Credit: Courtney Fisher
Date: May, 1980
Negative Filed at Vermont Division for
Historic Preservation
Description: (L to R) 38-40, 44-46 Wright
Avenue (#'s 14 and 13); View WNW
Photograph 10



#s 22,21,20,19,18,17, 31,29

80-# 42

10 11

Lakeside Historic District

Burlington, Vermont

Credit: Courtney Fisher

Date: May, 1980

Negative Filed at Vermont Division for
Historic Preservation

Description: Central Avenue looking N from
corner of Harrison Avenue (L to R) 65-67,
59-61, 53-55, 47-49, 41-43, 31-33, 32-36,
42-44 Central Avenue (#'s 22, 21, 20, 19, 18
17, 31, 29); View N.

Photograph 11



#s 22, 21, 20, 19, 18, 29

80-11 42

Lakeside Historic District
Burlington, Vermont

Credit: Courtney Fisher

Date: May, 1980

Negative Filed at Vermont Division for
Historic Preservation

Description: Central Avenue looking WNW across
from corner of Harrison and Conger Avenues
(L to R) 65-67, 59-61, 53-55, 47-49, 41-43,
42-44 Central Avenue (#'s 22,21,20,19,18,29)

View WNW
Photograph 12



#s 30, 29

177-77-280

Lakeside Historic District

Burlington, Vermont

Credit: Clark Schoettle

Date: October, 1977

Negative Filed at Vermont Division for
Historic Preservation

Description: (L to R) 40 and 42-44 Central
Avenue (#'s 30 and 29); View ENE

Photograph 13



31

119-A-28C

Lakeside Historic District
Burlington, Vermont
Credit: Clark Schoettle
Date: October, 1977
Negative Filed at Vermont Division for
Historic Preservation
Description: 32-36 Central Avenue (#31);
View ENE
Photograph 14



#s 33, 34, 35, 4

80-17-1/2

Lakeside Historic District
Burlington, Vermont

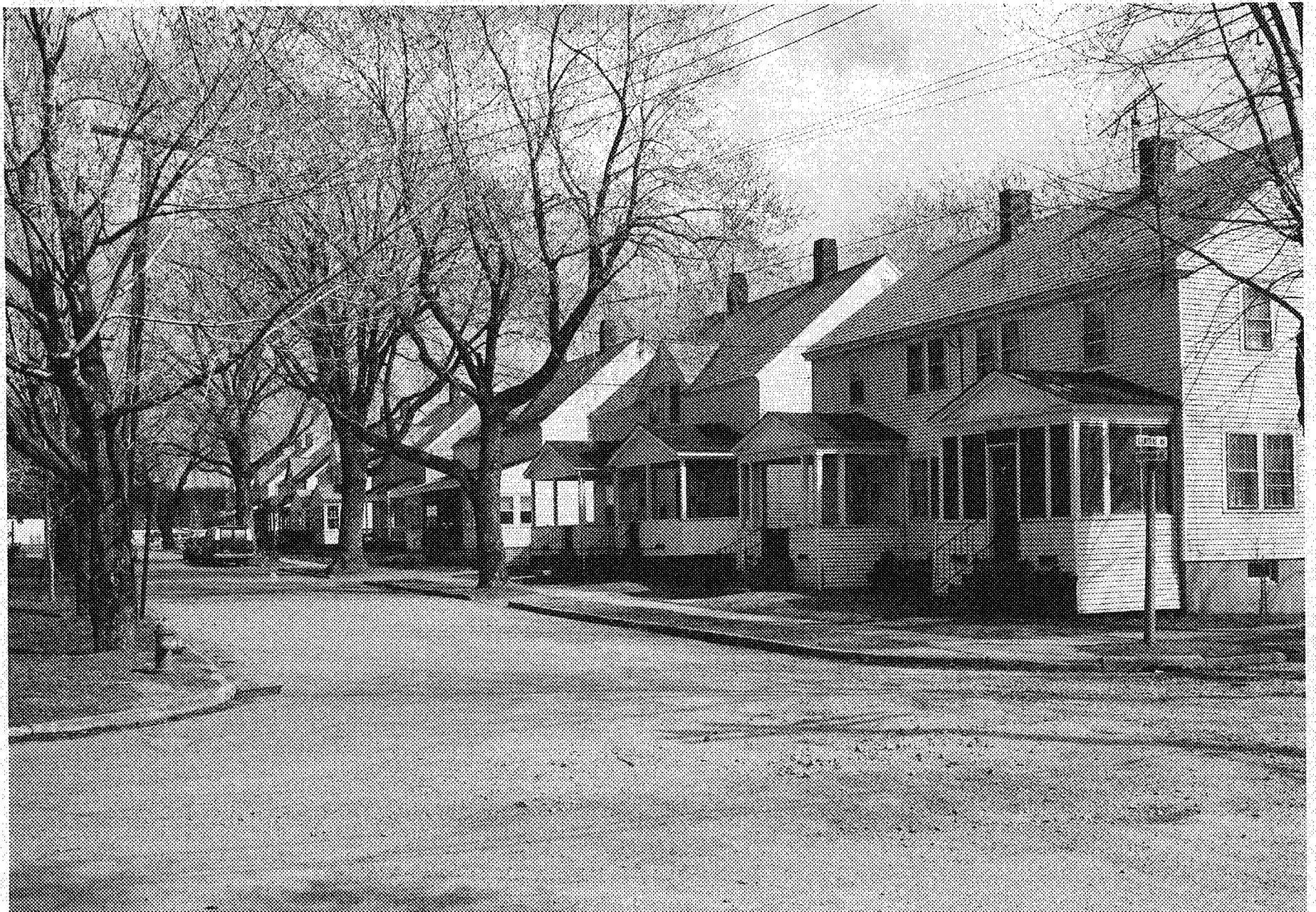
Credit: Courtney Fisher

Date: May, 1980

Negative Filed at Vermont Division for
Historic Preservation

Description: (L to R) 37, 29-33, 23-27 Conger
Avenue; 63-69 Lakeside Avenue (#'s 33, 34, 35
and 4); View NNW

Photograph 15



#s 42, 41, 40, 39, 38, 37, 36, 28

80-A 92

Lakeside Historic District

Burlington, Vermont

Credit: Courtney Fisher

Date: May, 1980

Negative Filed at Vermont Division for
Historic Preservation

Description: Harrison Avenue looking E from
corner of Central Avenue (L to R) 83-85,
77-79, 71-73, 65-67, 59-61, 53-55, 47-49,
41-43 Harrison Avenue (#'s 42, 41, 40, 39, 38,
37, 36, 28); View ESE
Photograph 16



#s 28, 36 - 42, 45, 44, 43

80-A-42

Lakeside Historic District

Burlington, Vermont

Credit: Courtney Fisher

Date: May, 1980

Negative Filed at Vermont Division for
Historic Preservation

Description: E end of Harrison Avenue looking
NW across Vermont Railroad (L to R) 41-43,
47-49, 53-55, 59-61, 65-67, 71-73, 77-79, 83-85,
74-76, 78-80, 84-86 Harrison Avenue (#'s 28,
36, 37, 38, 39, 40, 41, 42, 45, 44, 43); View NW
Photograph 17



33,51,50,48,47,46,45

56-11 42

Lakeside Historic District

Burlington, Vermont

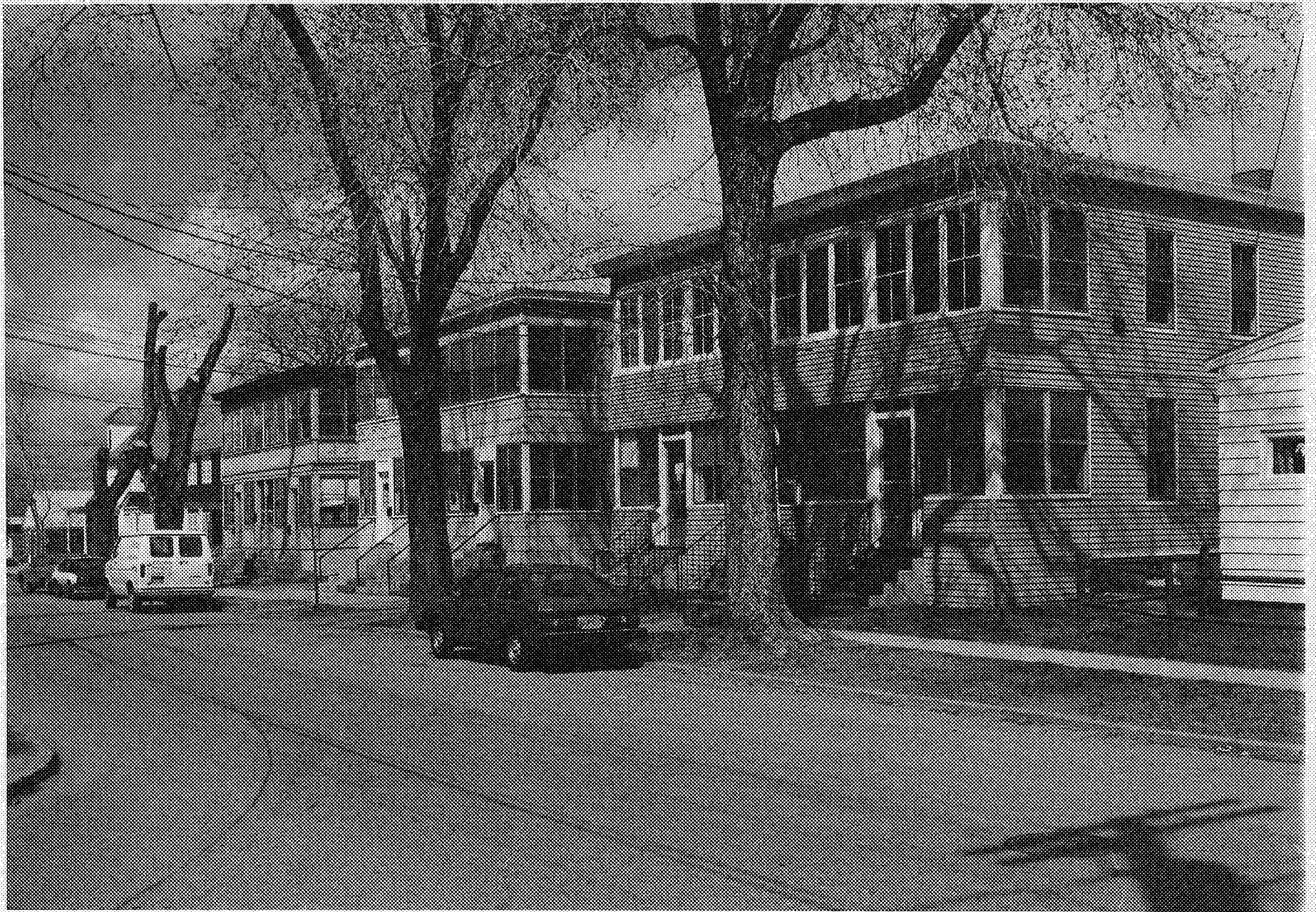
Credit: Courtney Fisher

Date: May, 1980

Negative Filed at Vermont Division for
Historic Preservation

Description: Conger Avenue looking N from cor-
ner of Harrison Avenue (L to R) 37, 42, 46,
56-58, 62-64, 68-70, 74-76 Conger Avenue
(#'s 33, 51, 50, 48, 47, 46, 45); View N

Photograph 18



#s 3, 57, 56, 55, 54, 53

80-7-42

19 -

Lakeside Historic District
Burlington, Vermont

Credit: Courtney Fisher

Date: May, 1980

Negative Filed at Vermont Division for
Historic Preservation

Description: (L to R) 79 Lakeside Avenue; 8,
14-16, 20-22, 24-26, 28-30 Conger Avenue
(#'s 3, 57, 56, 55, 54, 53); View NE

Photograph 19