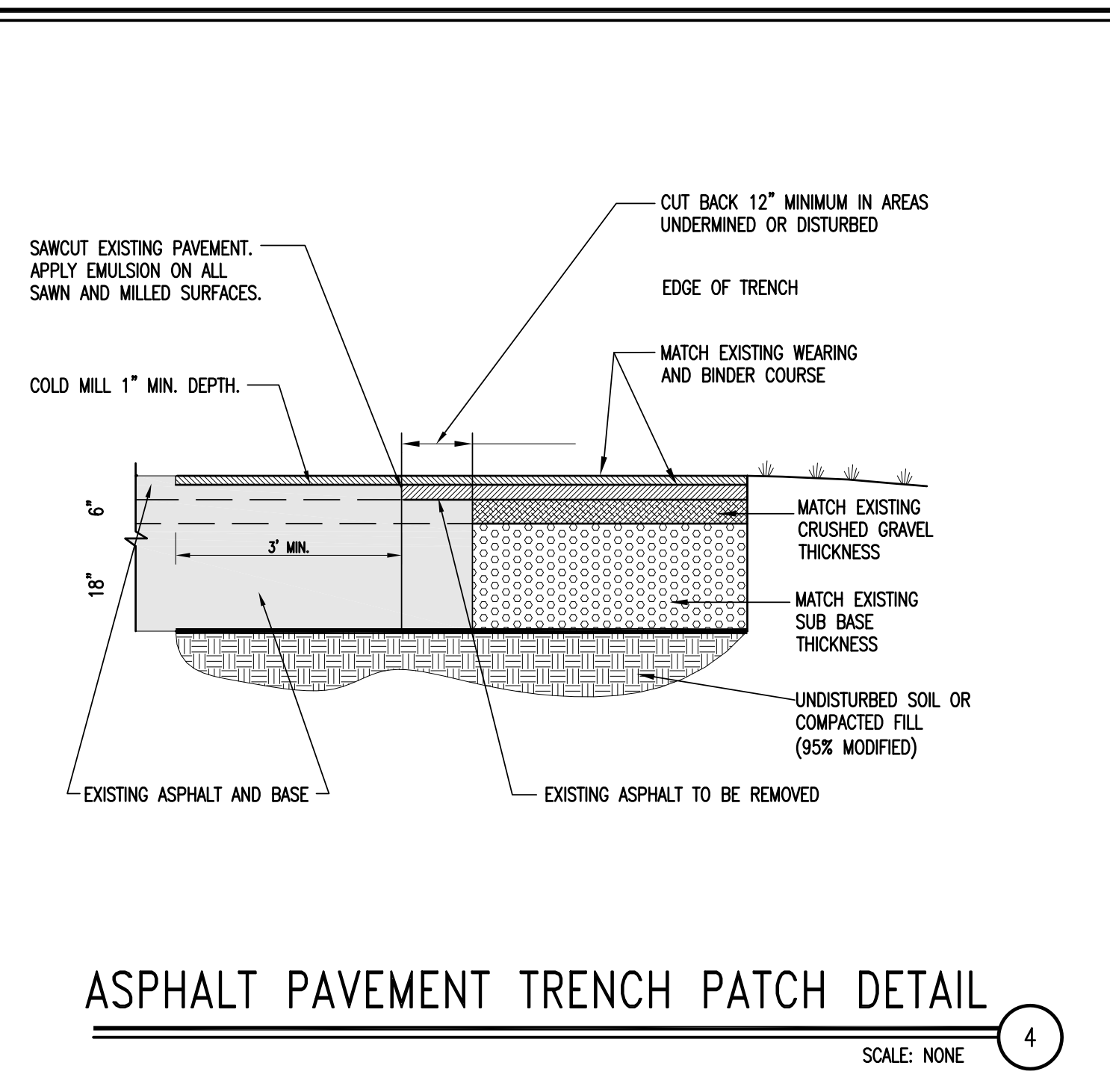


- PAVEMENT PATCHING NOTES:**
1. IN ALL PAVEMENT AREAS TO BE PATCHED, SAW CUT AND REMOVE EXISTING PAVEMENT.
 2. EXCAVATE BASE MATERIAL AND SUB-BASE MATERIAL IF INADEQUATE.
 3. COMPACT ALL FILL MATERIAL TO 95% OPTIMUM DENSITY.
 4. TOP COURSE TO BE TYPE IV FOR BASKETBALL AREA.
 5. ADD ALTERNATE #2 ENTALS REPLACEMENT OF LOWER 2" OF GRAVEL IN PAVEMENT SECTION WITH 2" EXTRUDED POLYSTYRENE BOARD INSULATION.

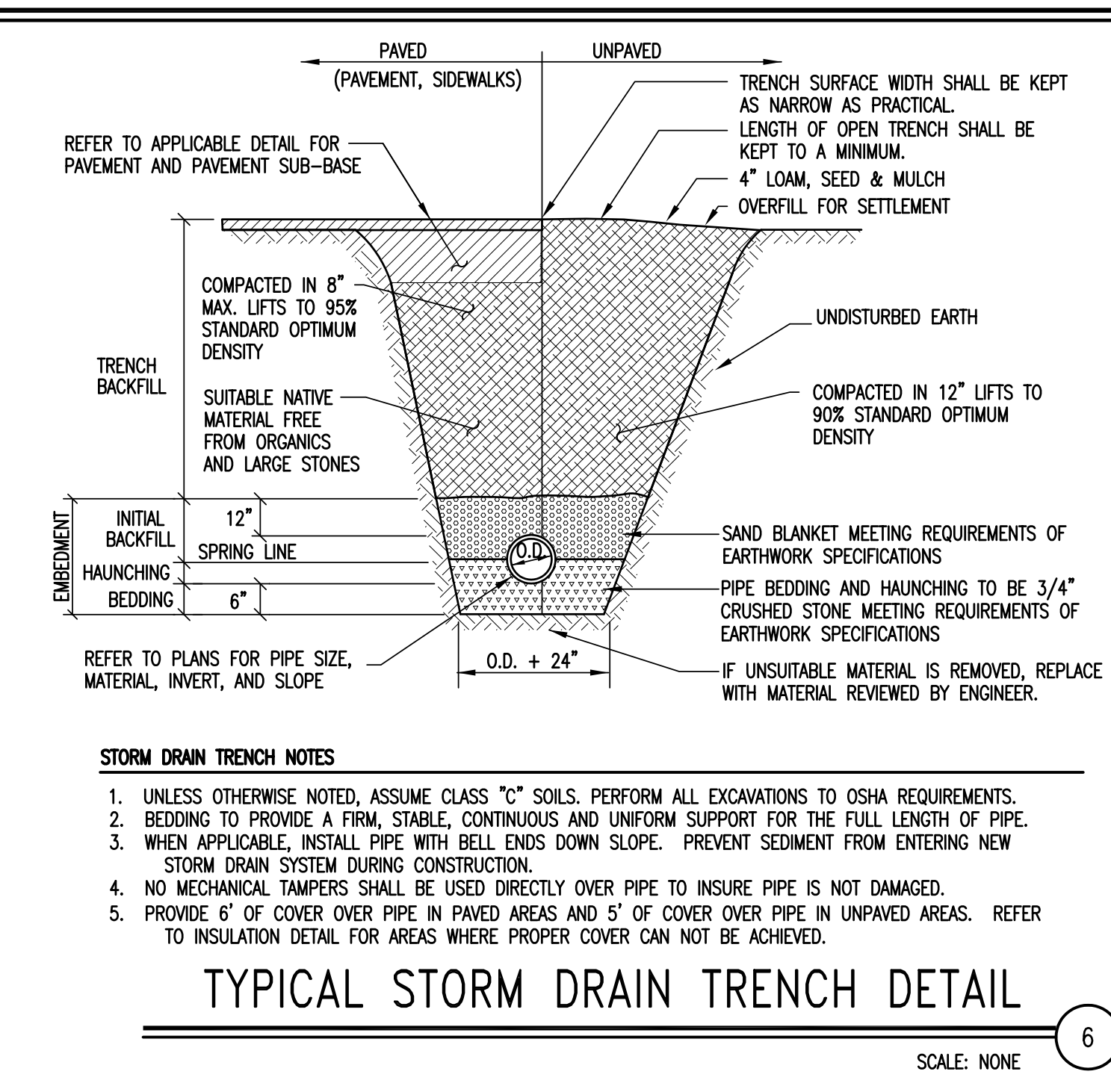
TYPICAL PAVEMENT DETAIL

SCALE: NONE 1



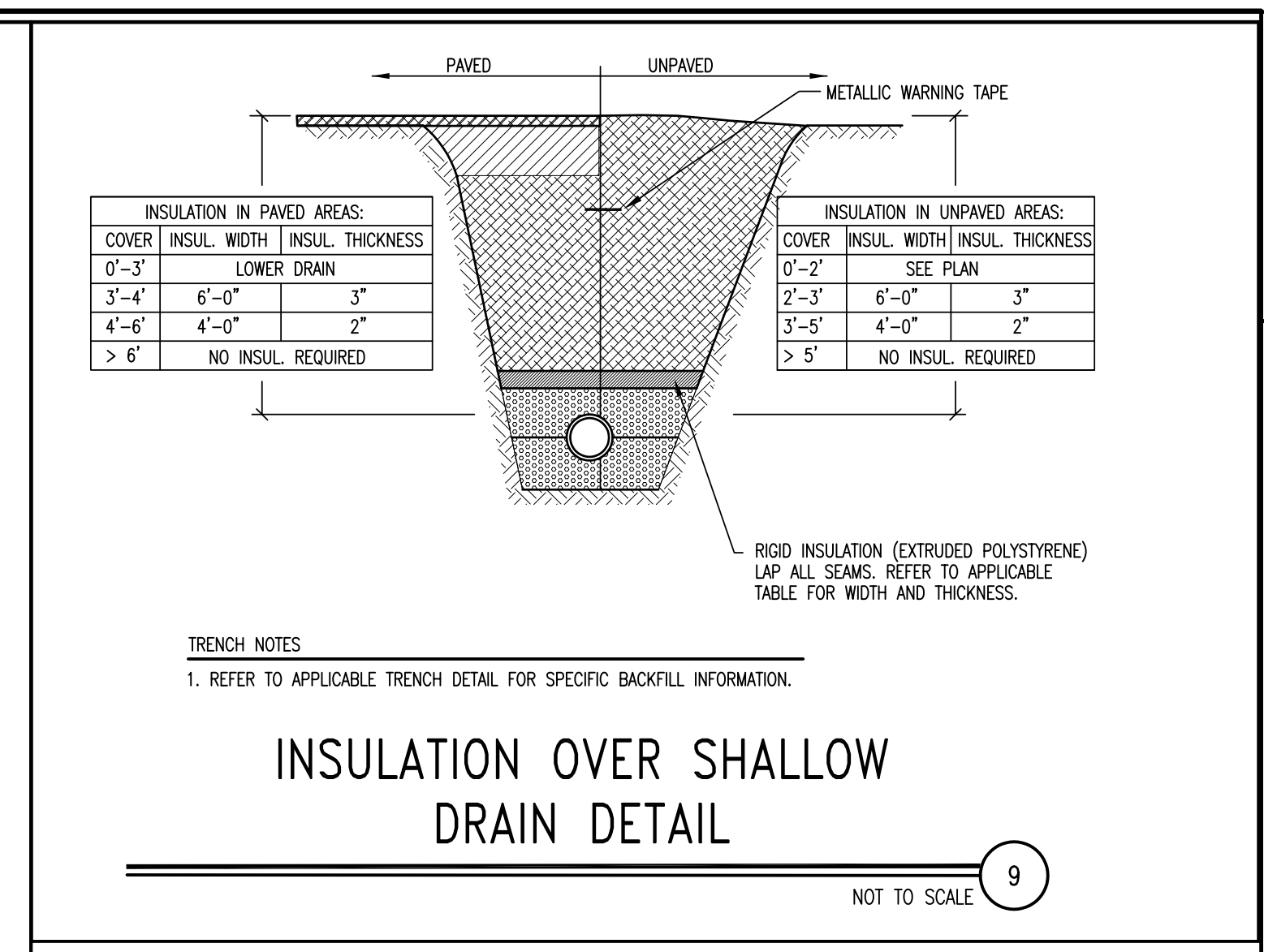
ASPHALT PAVEMENT TRENCH PATCH DETAIL

SCALE: NONE 4



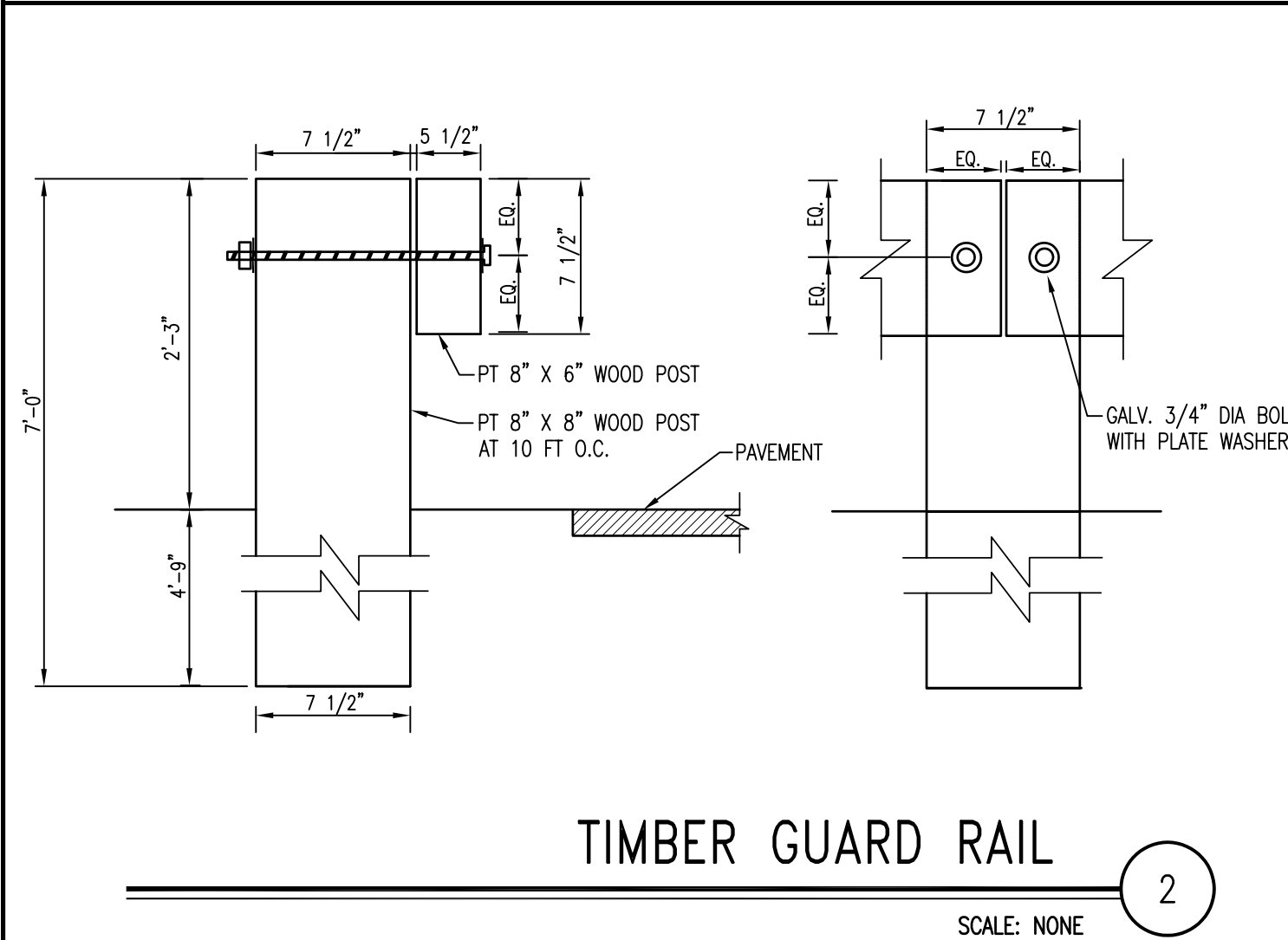
TYPICAL STORM DRAIN TRENCH DETAIL

SCALE: NONE 6



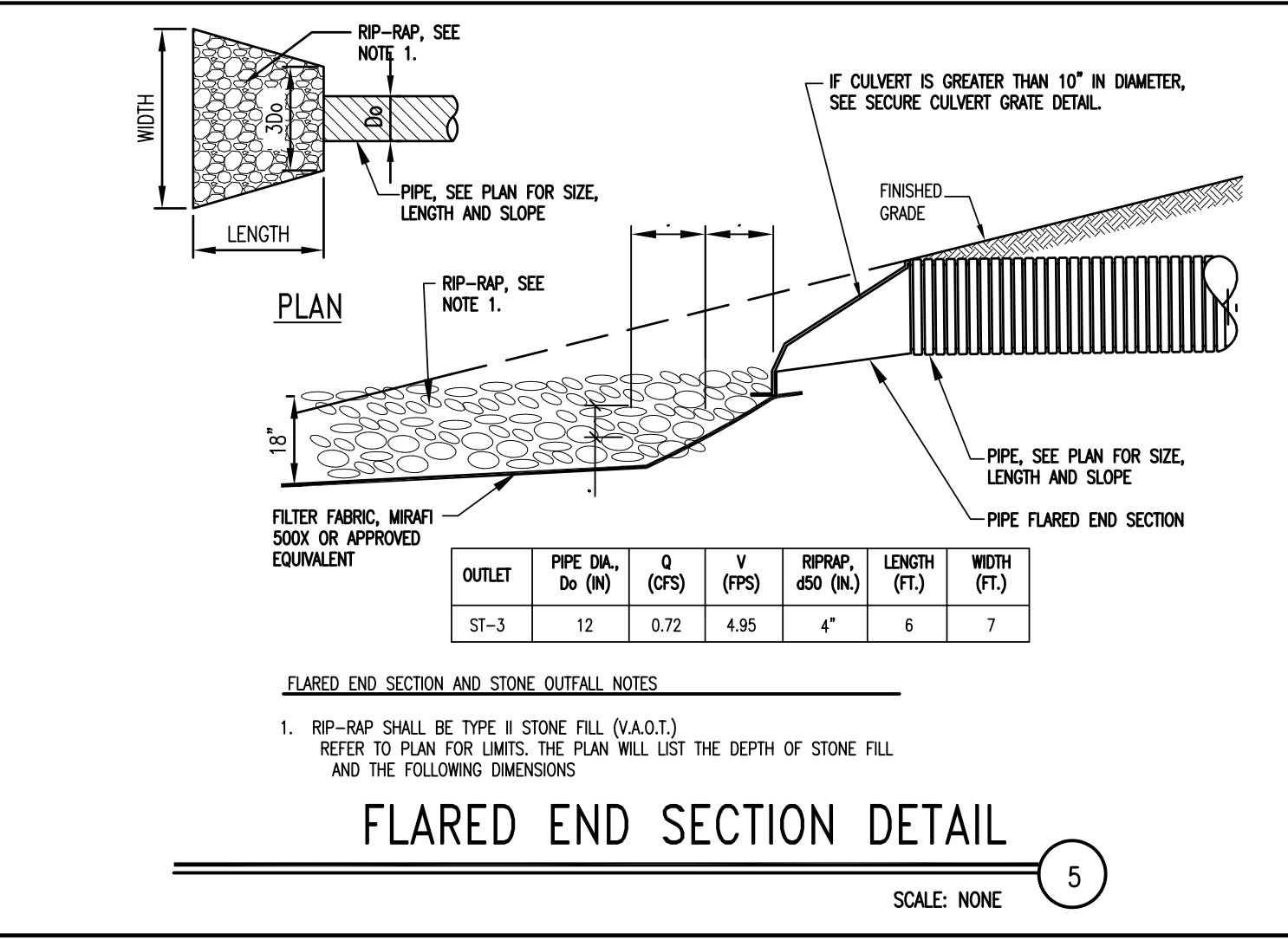
INSULATION OVER SHALLOW DRAIN DETAIL

NOT TO SCALE 9



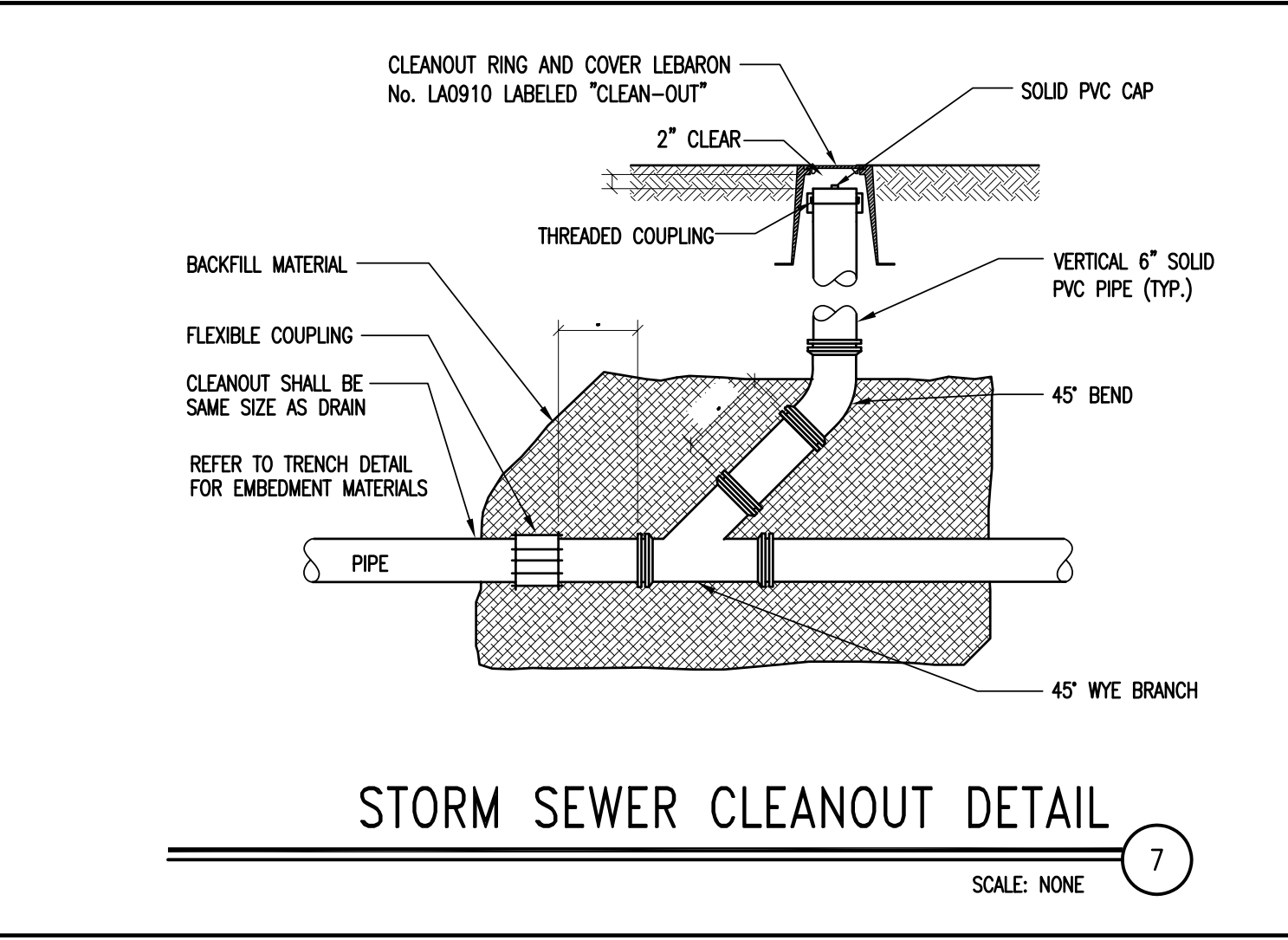
TIMBER GUARD RAIL

SCALE: NONE 2



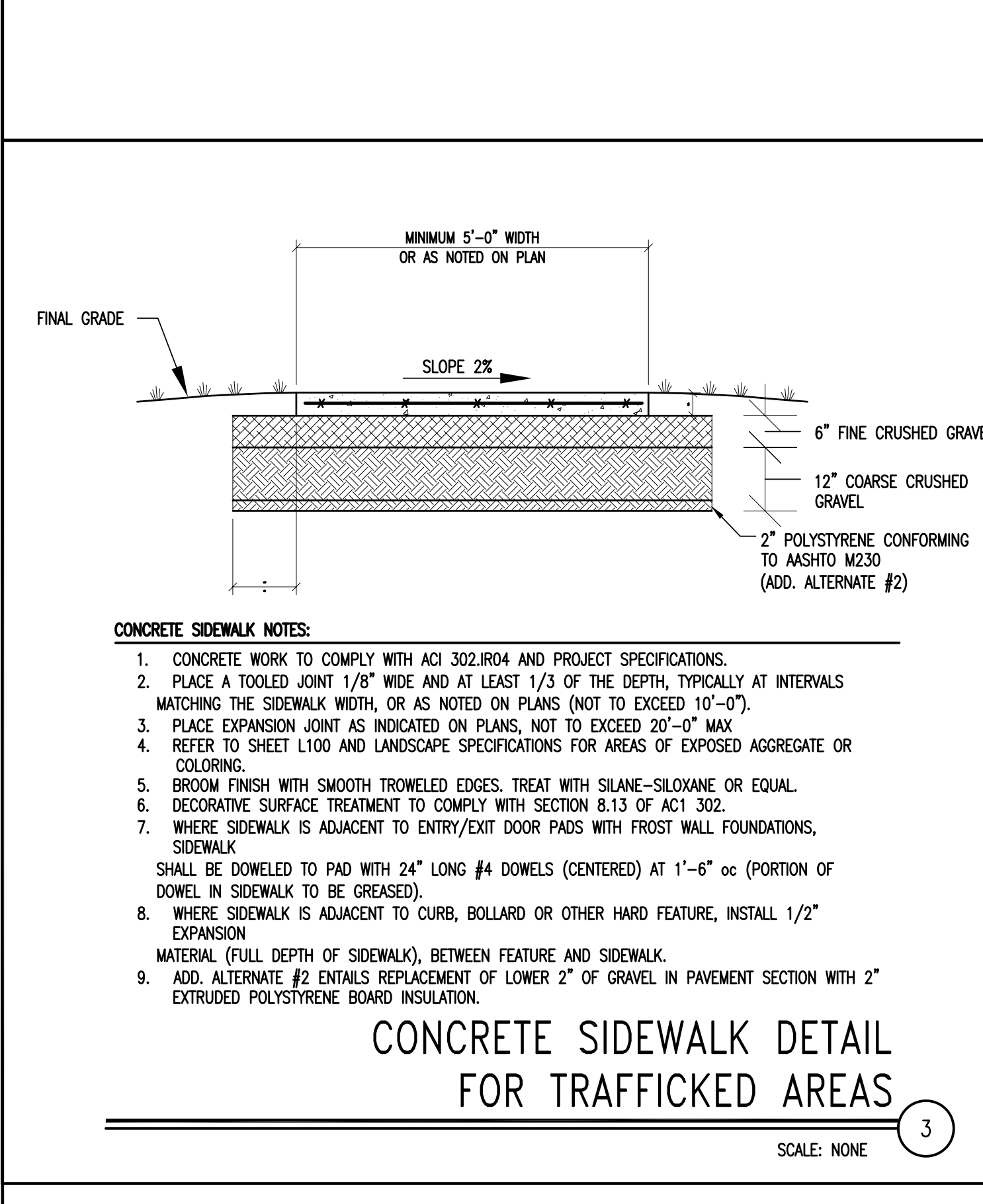
FLARED END SECTION DETAIL

SCALE: NONE 5



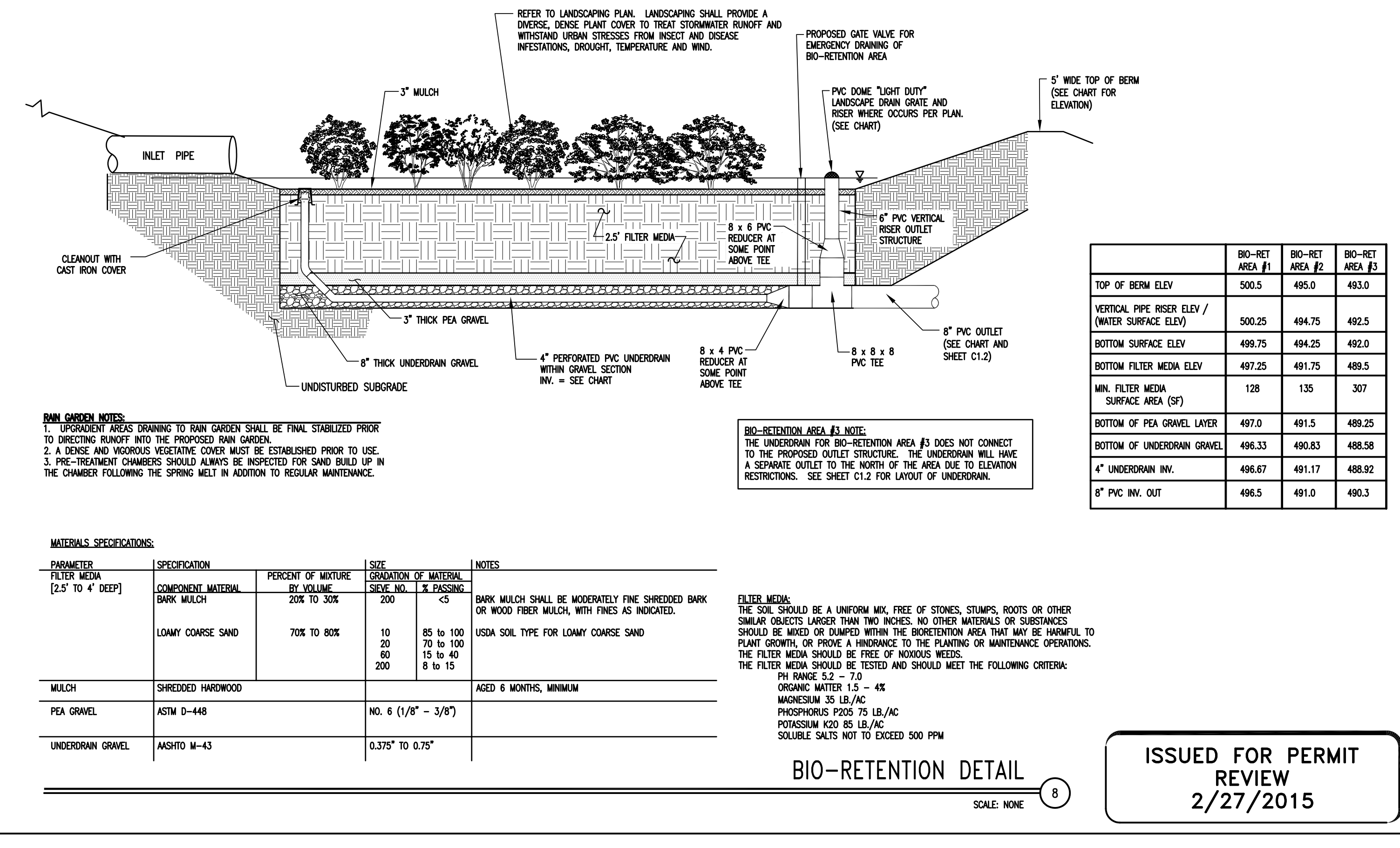
STORM SEWER CLEANOUT DETAIL

SCALE: NONE 7



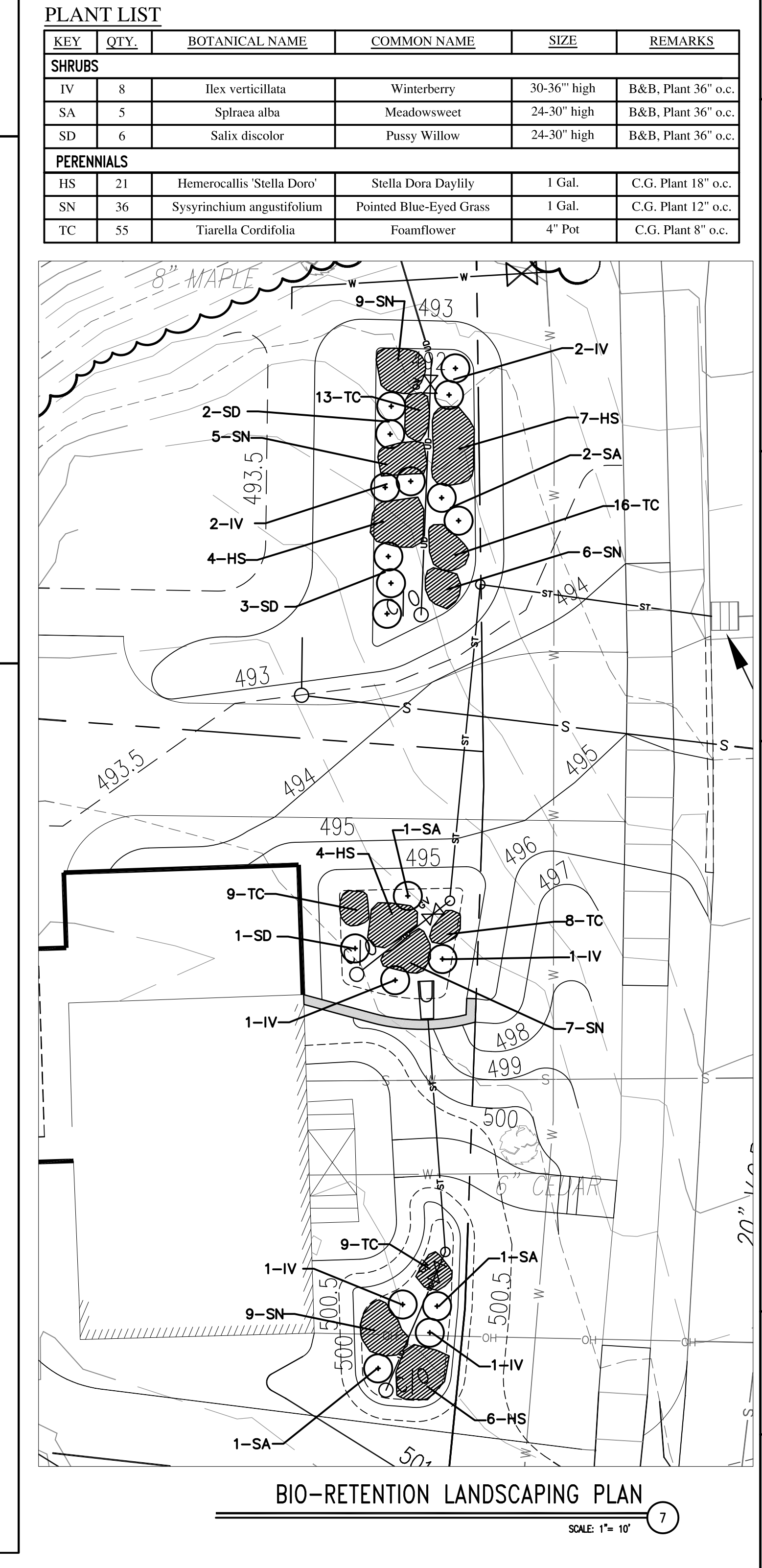
CONCRETE SIDEWALK DETAIL FOR TRAFFICKED AREAS

SCALE: NONE 3



BIO-RETENTION DETAIL

SCALE: NONE 8



BIO-RETENTION LANDSCAPING PLAN

SCALE: 1" = 10' 9

Stamp

Chkd.

Description

Rev. No.

ENGINEERING VENTURES PC
 208 Fynn Avenue, Suite 2A Burlington, VT 05401
 Tel: 802.863.6225 • Fax: 802.863.6306
 85 Mechanic Street, Suite 300A, Lebanon, NH 03766
 Tel: 603.442.3333 • Fax: 603.442.3331
 www.engineeringventures.com

Client: **NATHANIEL HAYWARD**
 302 Mountain View Drive
 Colchester, VT 05448
 (802) 578-5078

Sheet Title: **Site Details and Stormwater Management Details**

Project Title: **380 Colchester Avenue**
 Burlington, VT

Designed By: **MD/KW**
 Checked By: **KW**
 Drawn By: **MD**
 Scale: **N.T.S.**
 Date: **02/27/15**

C2.0
 EV#14062