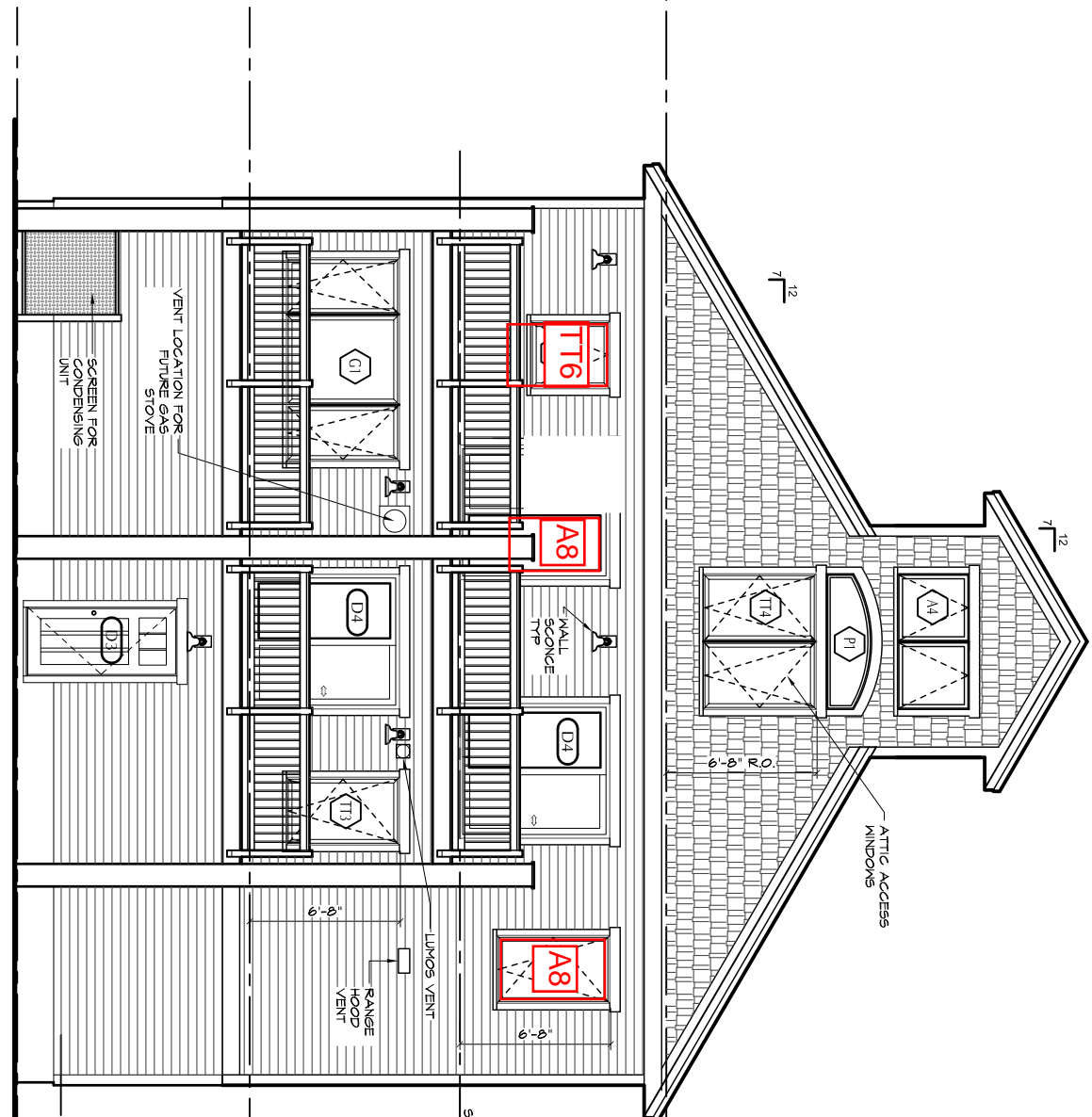


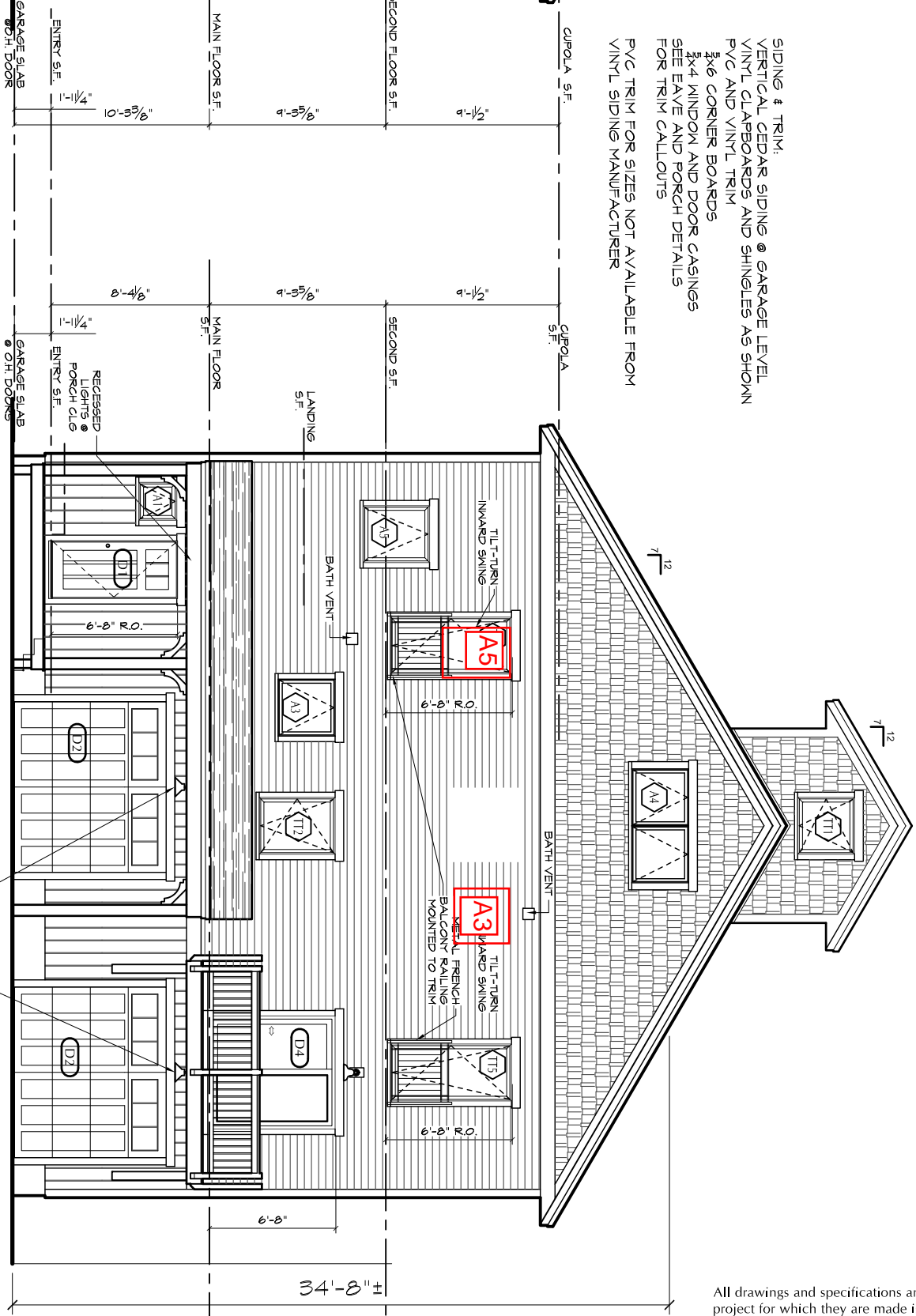
PREMIT PLANS

1 WEST ELEVATION
A2.1 1/8" = 1'-0"



SIDING & TRIM:
VERTICAL CEDAR SIDING @ GARAGE LEVEL
VINYL CLAPBOARDS AND SHINGLES AS SHOWN
PVC AND VINYL TRIM
3x6 CORNER BOARDS
3x4 WINDOW AND DOOR CASINGS
SEE EAVE AND PORCH DETAILS
FOR TRIM CALLOUTS
PVC TRIM FOR SIZES NOT AVAILABLE FROM
VINYL SIDING MANUFACTURER

2 EAST ELEVATION
A2.1 1/8" = 1'-0"



All drawings and specifications are the property of Alpine Architects whether the project for which they are made is executed or not. The Drawings and Specifications shall not be copied or used on other projects or for additions to or completion of this project without the expressed written approval of Alpine Architects.

