

CHERRY STREET FACADE:

	AREA (SQ.FT.)	% OF WHOLE
TOTAL ELEVATION	48,774	
BRICK FACED PANEL	13,875	28
LIMESTONE FINISHED PANEL	4,580	9
GLAZING	23,704	49
GLAZED SPANDREL PANEL	0	0
STONE BASE	211	1
METAL PANEL	6,404	13

RETAIL ELEVATION ONLY		
	AREA (SQ.FT.)	% OF WHOLE
GLAZING	3,656	70
NON-GLAZING	1,577	30

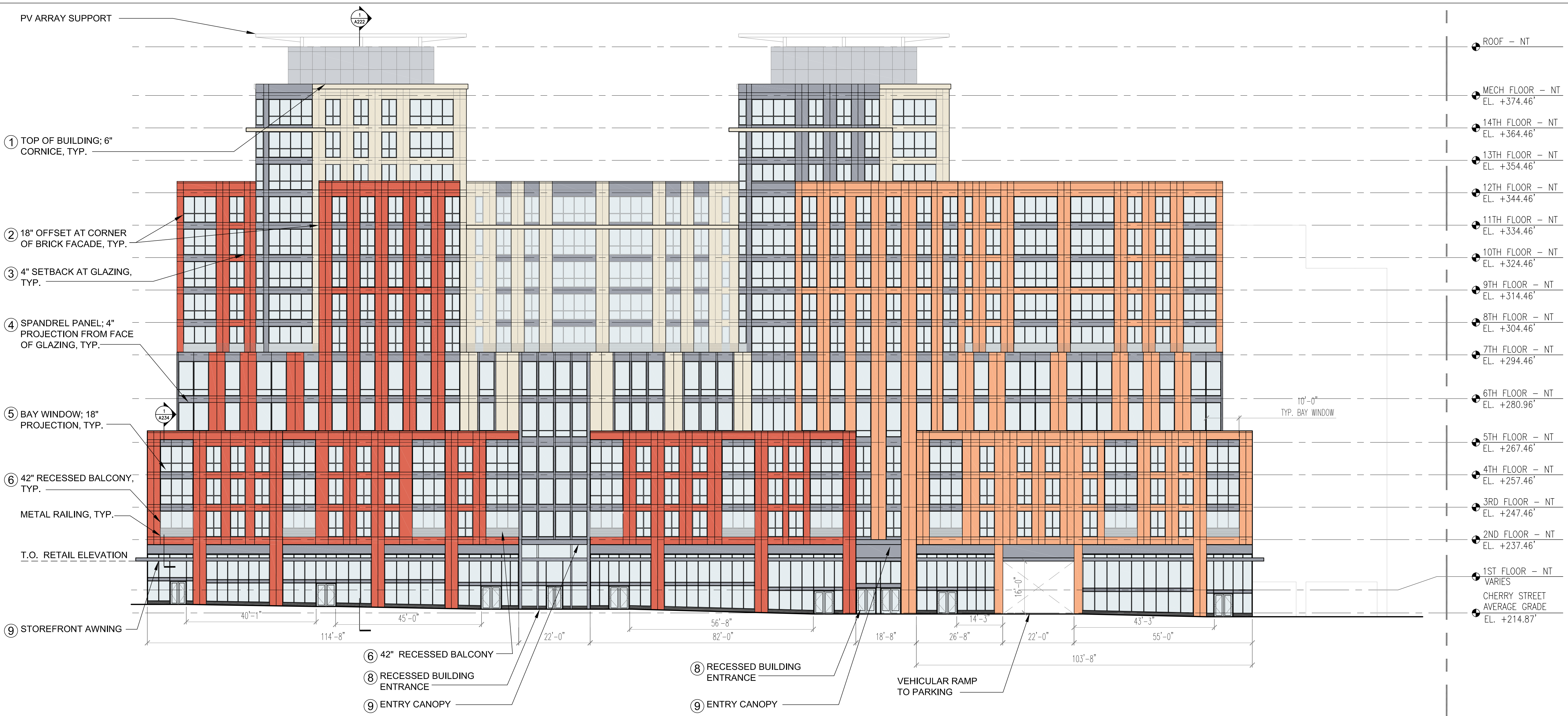
MATERIAL LEGEND

- PRIMARY MATERIAL 1A: BRICK FACED PANEL
- PRIMARY MATERIAL 1B: BRICK FACED PANEL
- PRIMARY MATERIAL 2: LIMESTONE FINISHED PANEL
- PRIMARY MATERIAL 3A: GLAZING
- PRIMARY MATERIAL 3B: GLAZED SPANDREL PANEL
- PRIMARY MATERIAL 4: STONE BASE
- ACCENT MATERIAL 1: METAL PANEL

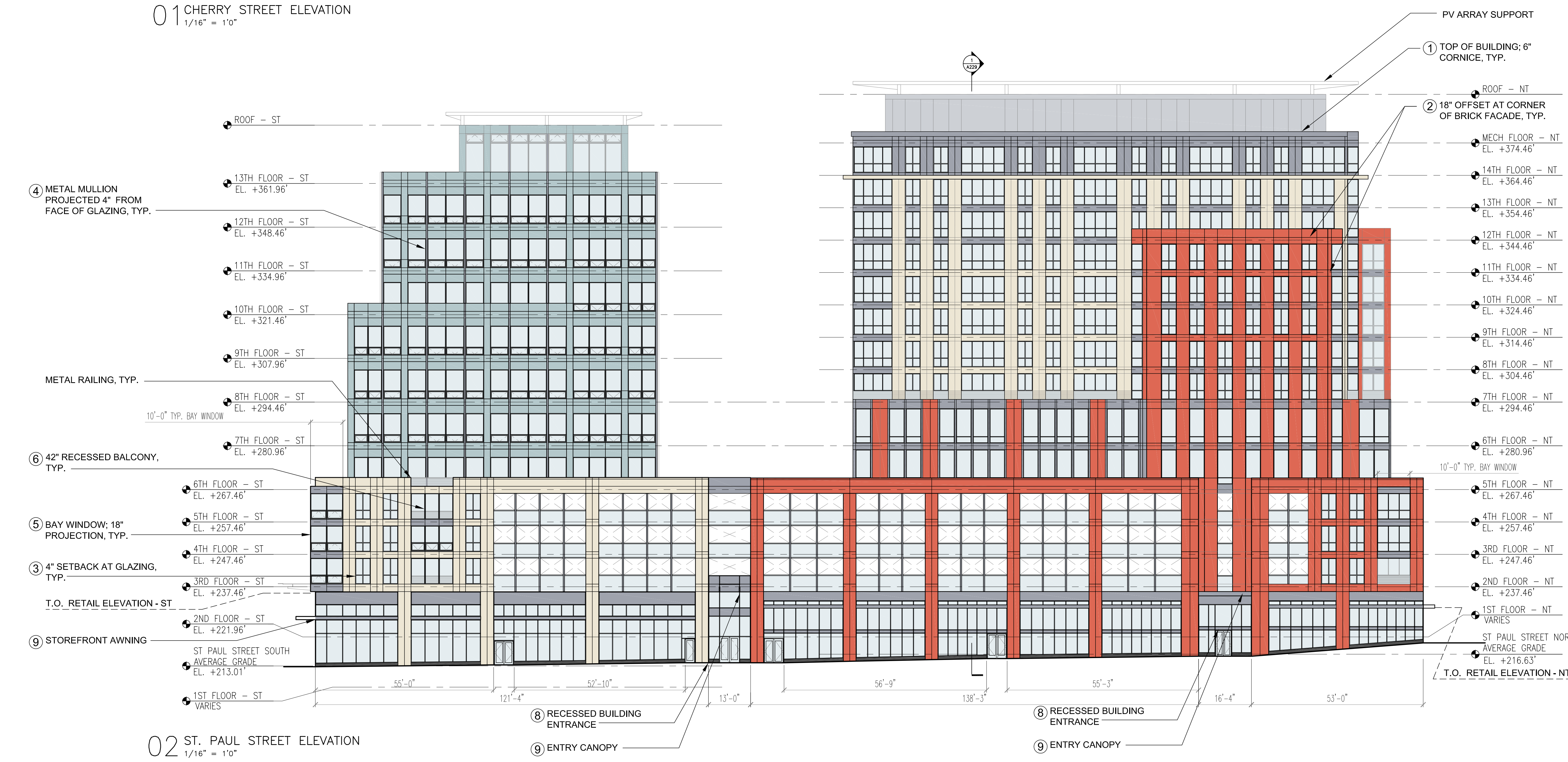
ST. PAUL STREET FACADE:

	AREA (SQ.FT.)	% OF WHOLE
TOTAL ELEVATION	45,047	
BRICK FACED PANEL	6,884	15
LIMESTONE FINISHED PANEL	4,934	11
GLAZING	23,135	51
GLAZED SPANDREL PANEL	4,761	11
STONE BASE	258	1
METAL PANEL	5,075	11

RETAIL ELEVATION ONLY		
	AREA (SQ.FT.)	% OF WHOLE
GLAZING	4,205	75
NON-GLAZING	1,415	25



01 CHERRY STREET ELEVATION
 1/16" = 1'0"



02 ST. PAUL STREET ELEVATION
 1/16" = 1'0"

NOT FOR CONSTRUCTION

Date	No.	Description
1/20/2017	03	P & Z RESUBMISSION 2
1/11/2017	02	P & Z RESUBMISSION 1
12/15/2016	01	P & Z SUBMISSION

Burlington Town Center,
 Devonwood Investors, LLC

101 Cherry Street
 Burlington, VT 05401

**ELEVATIONS -
 CHERRY STREET &
 ST. PAULS STREET**

Project Number	Revision & Date
1317-01	
Drawn by:	CH
Checked by:	JH/WF
Scale:	AS NOTED
Drawing Number:	

A-201