

**PC Construction**  
 152 Tilly Drive  
 South Burlington, VT 05403  
 (802) 651-1283  
 www.pconstruction.com

**Construction Manager**  
 (802) 651-1283  
 www.pconstruction.com

**Freeman French Freeman, Inc.**  
 81 Maple Street  
 Burlington, VT 05401  
 (802) 864-6844  
 www.fffrc.com

**Consulting Architect**  
 (802) 651-1283  
 www.fffrc.com

**Hardy Structural Engineering**  
 875 Roosevelt Hwy, Suite 130  
 Colchester, VT 05446  
 (802) 655-0755  
 www.hardyse.com

**Structural Engineer**  
 (802) 655-0755  
 www.hardyse.com

**Hallam ICS**  
 88 Eastwood Drive, Suite 200  
 South Burlington, VT 05403  
 (802) 658-4891  
 www.hallam-ics.com

**Mechanical Engineer**  
 (802) 658-4891  
 www.hallam-ics.com

**Engineering Ventures P.C.**  
 208 Flynn Avenue, Suite 2A  
 Burlington, VT 05401  
 (802) 863-8225  
 www.engineeringventures.com

**Civil Engineer**  
 (802) 863-8225  
 www.engineeringventures.com

**GeoDesign**  
 1233 Shelburne Rd, Suite 360  
 South Burlington, VT 05403  
 (802) 652-5140  
 www.geodesign.net

**Geotechnical Engineer**  
 (802) 652-5140  
 www.geodesign.net

**SE Group**  
 131 Church Street, 3rd Floor  
 Burlington, VT 05401  
 (802) 862-0098  
 www.segroup.com

**Landscape Architect**  
 (802) 862-0098  
 www.segroup.com

**BANK STREET FACADE:**

	AREA (SQ.FT.)	% OF WHOLE
<b>TOTAL ELEVATION</b>	<b>36,346</b>	
BRICK FACED PANEL	1,663	5
LIMESTONE FINISHED PANEL	3,631	10
GLAZING	20,076	55
GLAZED SPANDREL PANEL	7,990	22
STONE BASE	152	< 1
METAL PANEL	2,834	8

RETAIL ELEVATION ONLY		
GLAZING	3,715	70
NON-GLAZING	1,574	30

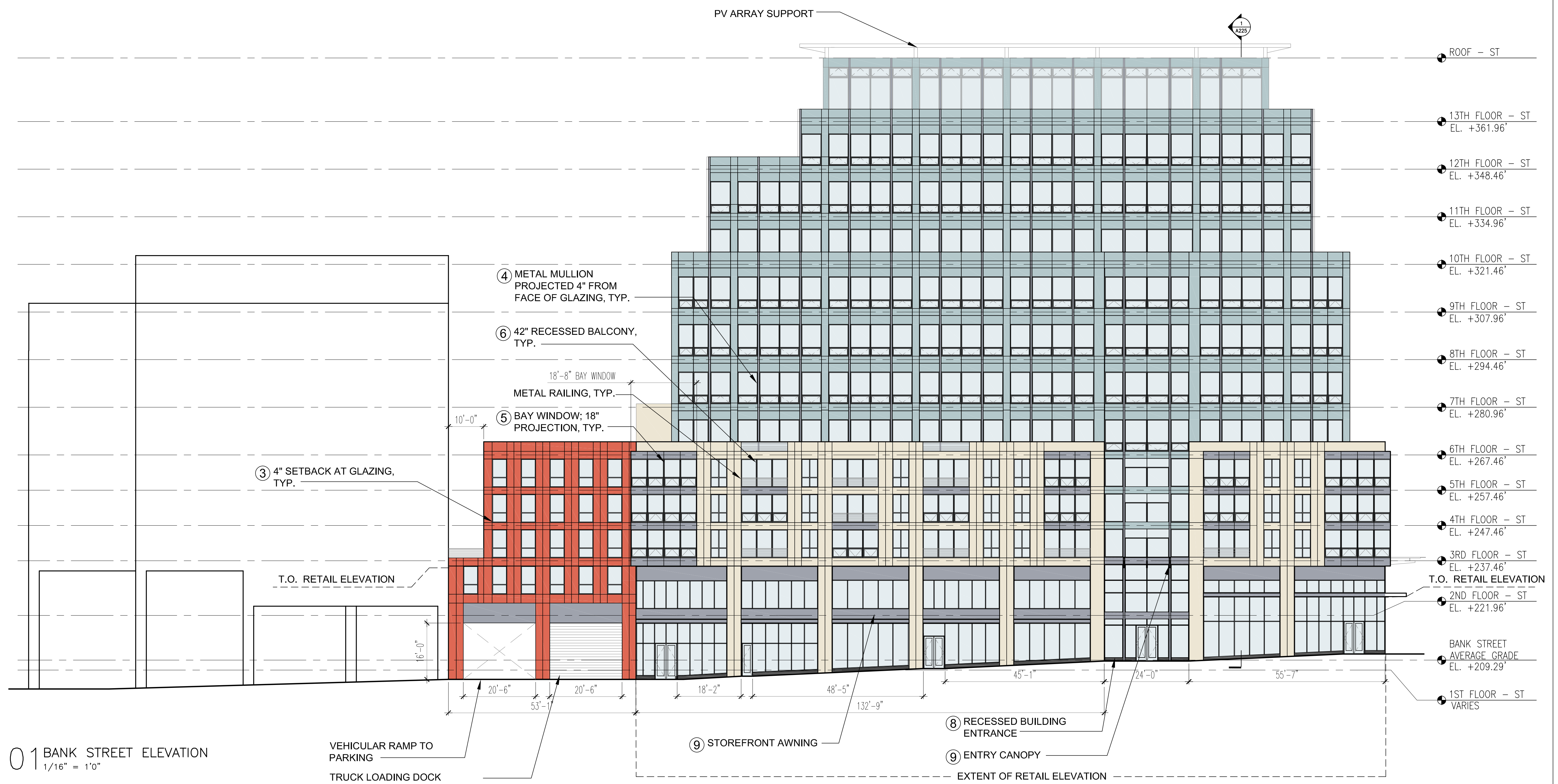
**MATERIAL LEGEND**

- PRIMARY MATERIAL 1A: BRICK FACED PANEL
- PRIMARY MATERIAL 1B: BRICK FACED PANEL
- PRIMARY MATERIAL 2: LIMESTONE FINISHED PANEL
- PRIMARY MATERIAL 3A: GLAZING
- PRIMARY MATERIAL 3B: GLAZED SPANDREL PANEL
- PRIMARY MATERIAL 4: STONE BASE
- ACCENT MATERIAL 1: METAL PANEL

**PINE STREET FACADE:**

	AREA (SQ.FT.)	% OF WHOLE
<b>TOTAL ELEVATION</b>	<b>30,655</b>	
BRICK FACED PANEL	7,234	24
LIMESTONE FINISHED PANEL	4,730	15
GLAZING	15,503	51
GLAZED SPANDREL PANEL	0	0
STONE BASE	192	< 1
METAL PANEL	2,996	10

RETAIL ELEVATION ONLY		
GLAZING	4,008	74
NON-GLAZING	1,412	26



**01 BANK STREET ELEVATION**  
 1/16" = 1'0"



**02 PINE STREET ELEVATION**  
 1/16" = 1'0"

**NOT FOR CONSTRUCTION**

Date	No.	Description
1/20/2017	03	P & Z RESUBMISSION 2
1/11/2017	02	P & Z RESUBMISSION 1
12/15/2016	01	P & Z SUBMISSION

**Burlington Town Center,**  
 Devonwood Investors, LLC

101 Cherry Street  
 Burlington, VT 05401

**ELEVATIONS -**  
**BANK STREET &**  
**PINE STREET**

Project Number	Revision & Date
1317-01	
CH	
JH/WF	

AS NOTED

**A-202**