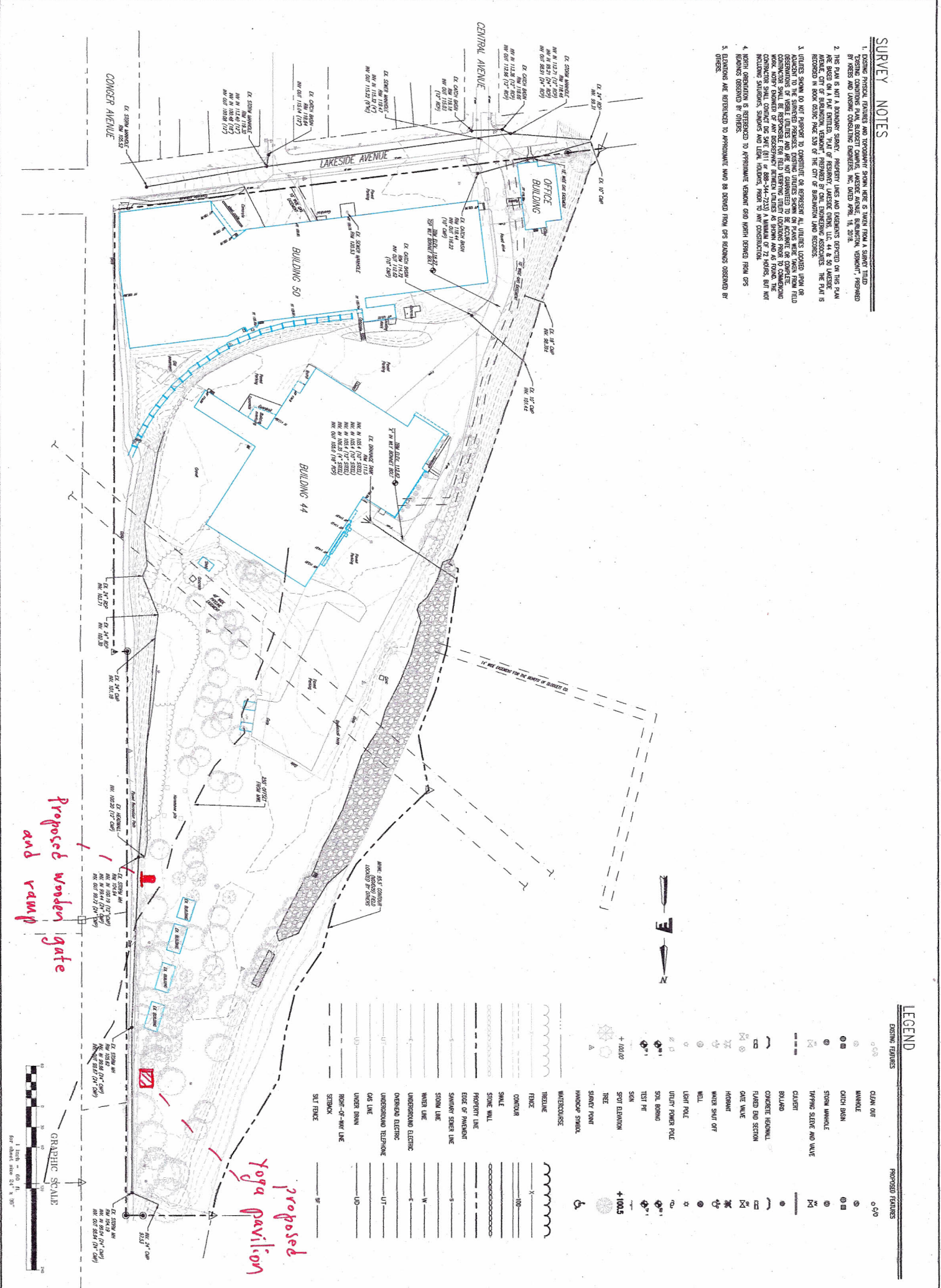


SURVEY NOTES

1. EXISTING PHYSICAL FEATURES AND TOPOGRAPHY SHOWN HERE IS TAKEN FROM A SURVEY TITLED "EXISTING CONDITIONS AND TOPOGRAPHY OF THE LAKESIDE AVENUE, BURKINWOOD VILLAGE, BURKINWOOD, VERMONT" PREPARED BY BRUNNEN & ASSOCIATES ENGINEERS, INC., BURKINWOOD, VT. IN 2011.
2. THIS PLAN IS NOT A RECONSTRUCTION SURVEY. PROPERTY LINES AND DISTANCES DERIVED ON THIS PLAN ARE BASED ON THE SURVEY RECORDS ON FILE WITH THE CLERK OF COURTS, BURKINWOOD, VERMONT. THE PLAN IS RECORDED IN BOOK 0536 PAGE 539 OF THE CITY OF BURKINWOOD LAND RECORDS.
3. UTILITIES SHOWN DO NOT PERTAIN TO CONSTRUCTIVE OR REPRESENT ALL UTILITIES LOCATED FROM OR ADJACENT TO THE SURVEYED PREMISES. EXISTING UTILITIES SHOWN ON PLANS WERE TAKEN FROM FIELD OBSERVATION AND PHOTOGRAPHS. THE CLIENT HAS ADVISED THAT THE UTILITIES SHOWN ON THIS PLAN ARE NOT TO BE CONSIDERED AS A REPRESENTATIVE OF ANY INVESTIGATION BETWEEN UTILITIES AS SHOWN AND IS THAT THE CONTRACTOR SHALL CONTACT THE STATE (811 OR 888-344-2233) A MINIMUM OF 72 HOURS, BUT NOT LESS THAN 48 HOURS, PRIOR TO ANY CONSTRUCTION.
4. NORTH ORIENTATION IS REFERENCED TO APPROXIMATE VERMONT GRID NORTH DERIVED FROM GPS READINGS OBTAINED BY OTHERS.
5. ELEVATIONS ARE REFERENCED TO APPROXIMATE WADSWORTH SEA LEVEL DERIVED FROM GPS READINGS OBTAINED BY OTHERS.



LEGEND

EXISTING FEATURES		PROPOSED FEATURES	
◊	CLEAN CUT	◊	SPOT ELEVATION
⊙	MANHOLE	⊙	SPLICE JOINT
⊕	CATCH BASIN	⊕	HANDICAP SYMBOL
⊗	STONE MANHOLE	⊗	WATERCOURSE
⊘	TYPING SLAB AND WALK	⊘	FENCE
⊙	CLAYVERT	⊙	CONTOUR
⊙	BRUNTO	⊙	STONE WALL
⊙	CONCRETE FOOTING	⊙	EDGE OF PARADEL
⊙	FLARED END SECTION	⊙	SHOWER SEWER LINE
⊙	GATE VALVE	⊙	STONE LINE
⊙	HORIZONTAL	⊙	WATER LINE
⊙	WRENCH SHUT OFF	⊙	UNDERGROUND ELECTRIC
⊙	WELL	⊙	OVERHEAD ELECTRIC
⊙	LIGHT POLE	⊙	UNDERGROUND TELEPHONE
⊙	UTILITY POWER POLE	⊙	GAS LINE
⊙	SOIL BORING	⊙	UNDER DRAIN
⊙	TEST PIT	⊙	RIGHT-OF-WAY LINE
⊙	SINK	⊙	SETBACK
⊙	SPOT ELEVATION	⊙	SETBACK
⊙	SPLICE JOINT	⊙	SETBACK
⊙	HANDICAP SYMBOL	⊙	SETBACK
⊙	WATERCOURSE	⊙	SETBACK
⊙	FENCE	⊙	SETBACK
⊙	CONTOUR	⊙	SETBACK
⊙	STONE WALL	⊙	SETBACK
⊙	EDGE OF PARADEL	⊙	SETBACK
⊙	SHOWER SEWER LINE	⊙	SETBACK
⊙	STONE LINE	⊙	SETBACK
⊙	WATER LINE	⊙	SETBACK
⊙	UNDERGROUND ELECTRIC	⊙	SETBACK
⊙	OVERHEAD ELECTRIC	⊙	SETBACK
⊙	UNDERGROUND TELEPHONE	⊙	SETBACK
⊙	GAS LINE	⊙	SETBACK
⊙	UNDER DRAIN	⊙	SETBACK
⊙	RIGHT-OF-WAY LINE	⊙	SETBACK
⊙	SETBACK	⊙	SETBACK

Sheet Title: Existing Conditions Plan	Client: SAS Architects	Project Title: HULA 44-50 Lakeside Avenue Burlington, Vermont	Engineering Ventures PC 238 Flynn Avenue, Suite 2A Burlington, VT 05401 Tel. 802.863.6225 • Fax 802.863.6300 85 Mechanic Street, Suite 302A, Lebanon, NH 03766 Tel. 603.442.8333 • Fax 603.442.8333 www.engineeringventures.com	Rev. No. Description Chkd. Date
Scale: 05/07/2018 Designed By: _____ Checked By: _____ Drawn By: _____ Date: 05/07/2018				

C1.1
 EWB1819