

Green Mountain Habitat for Humanity
36 Convent Square
Burlington, VT

RECEIVED

FEB 26 2018

DEPARTMENT OF
PLANNING & ZONING

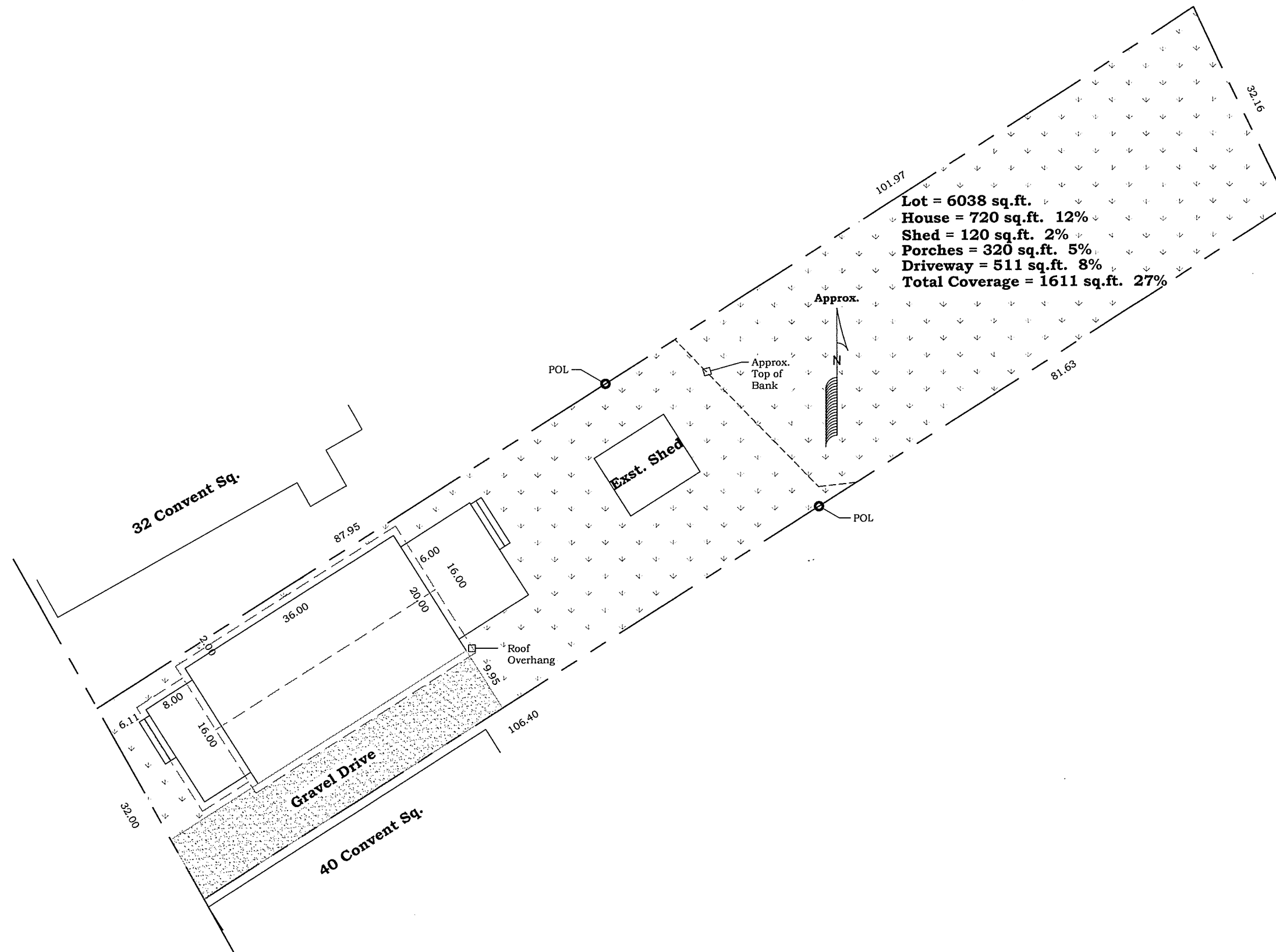
Issue Date: Sept., 2017
Rev: Jan., 2018
Rev: Feb., 2018
Rev:

Site
Plan

Drawn by: GMHH
Drawing #: 1 of 5

GMHH-1.0

Scale: 1" = 10'



Green Mountain Habitat for Humanity
36 Convent Square
Burlington, VT

RECEIVED
FEB 26 2018
DEPARTMENT OF
PLANNING & ZONING

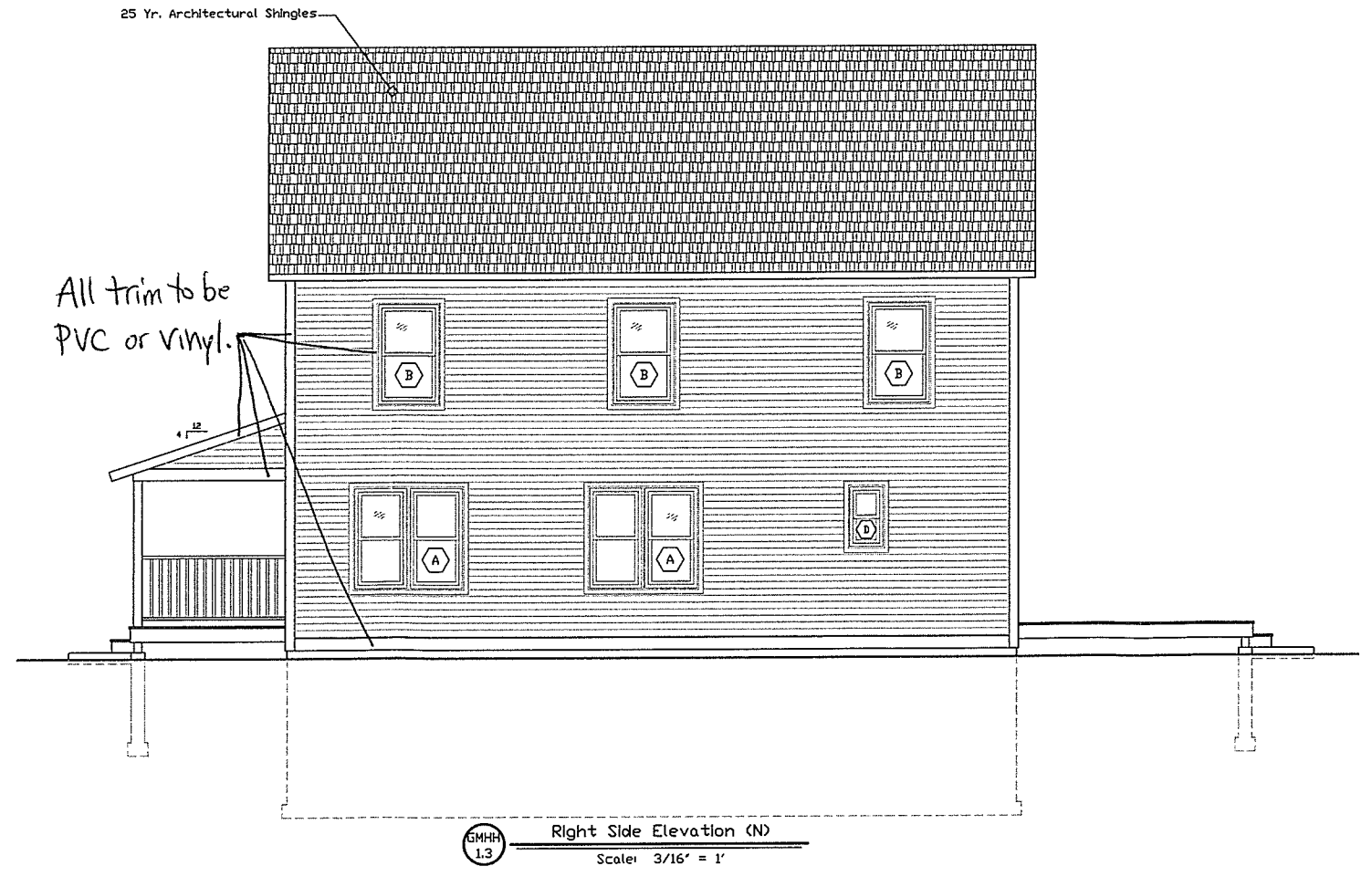
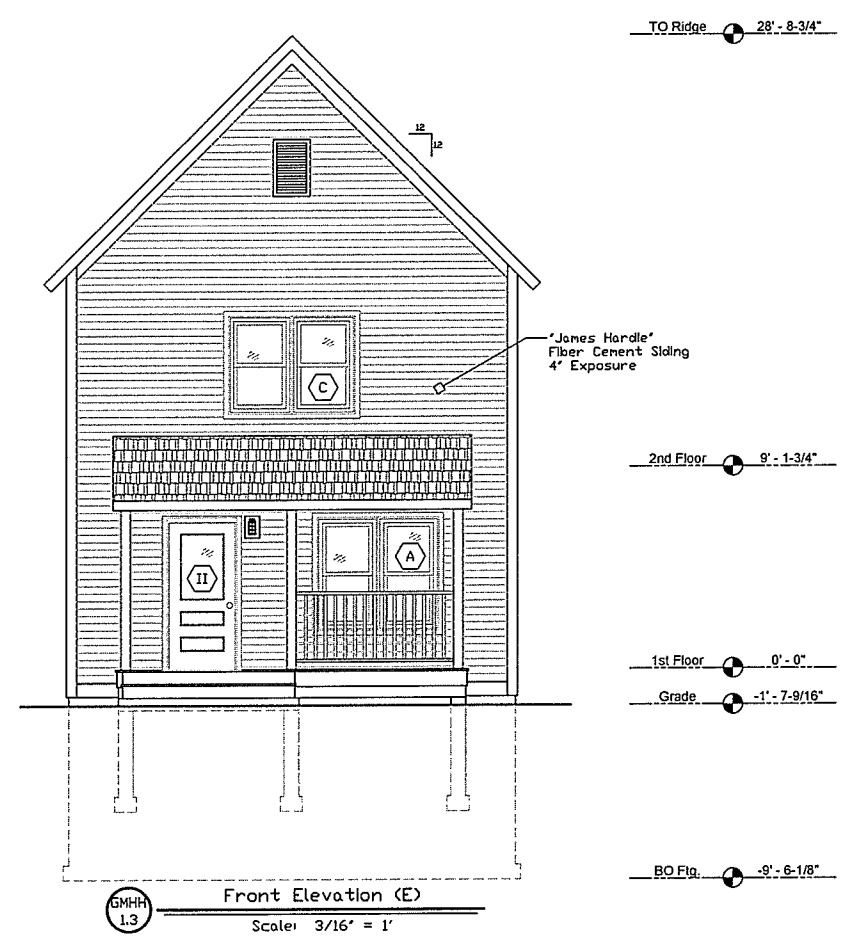
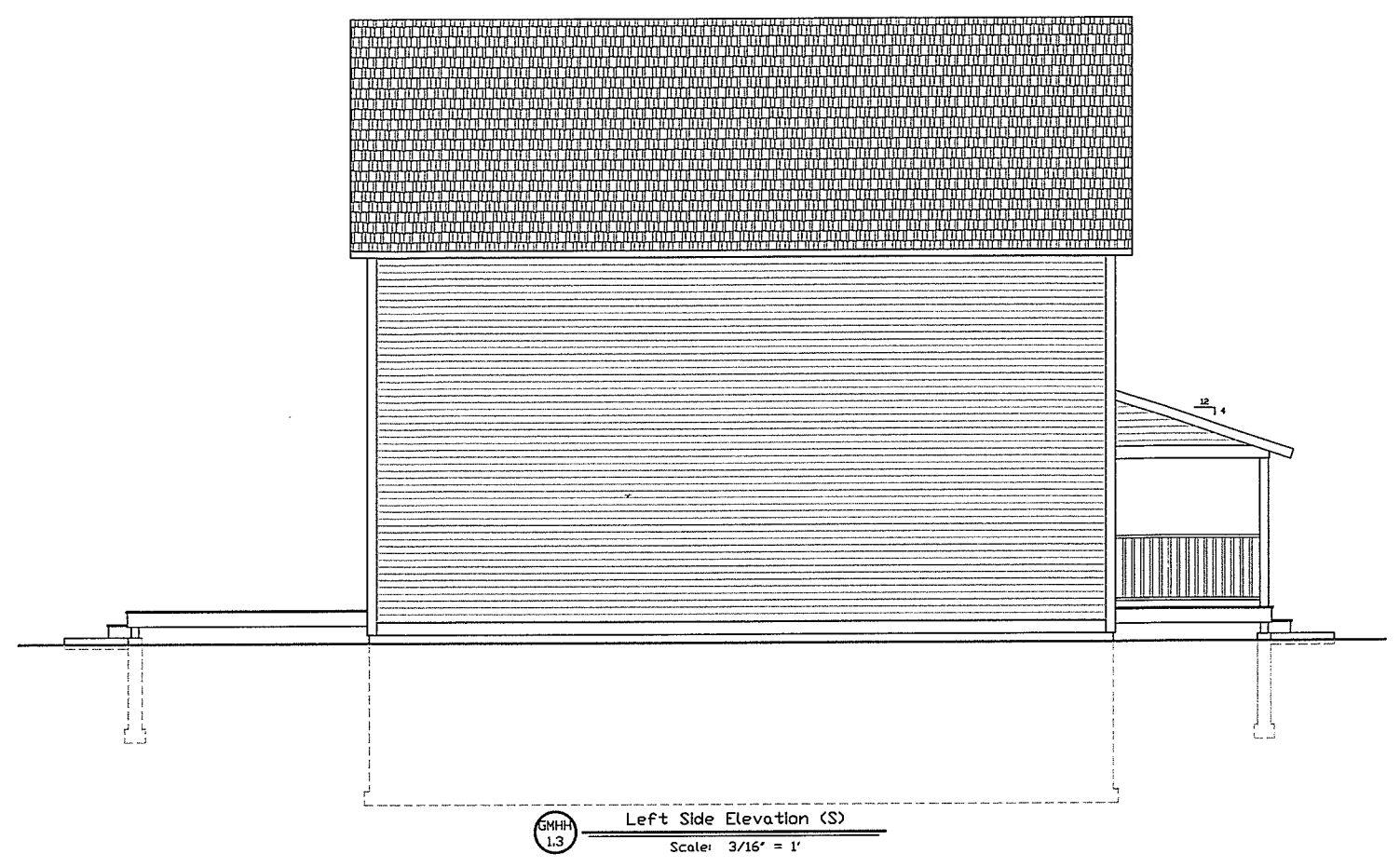
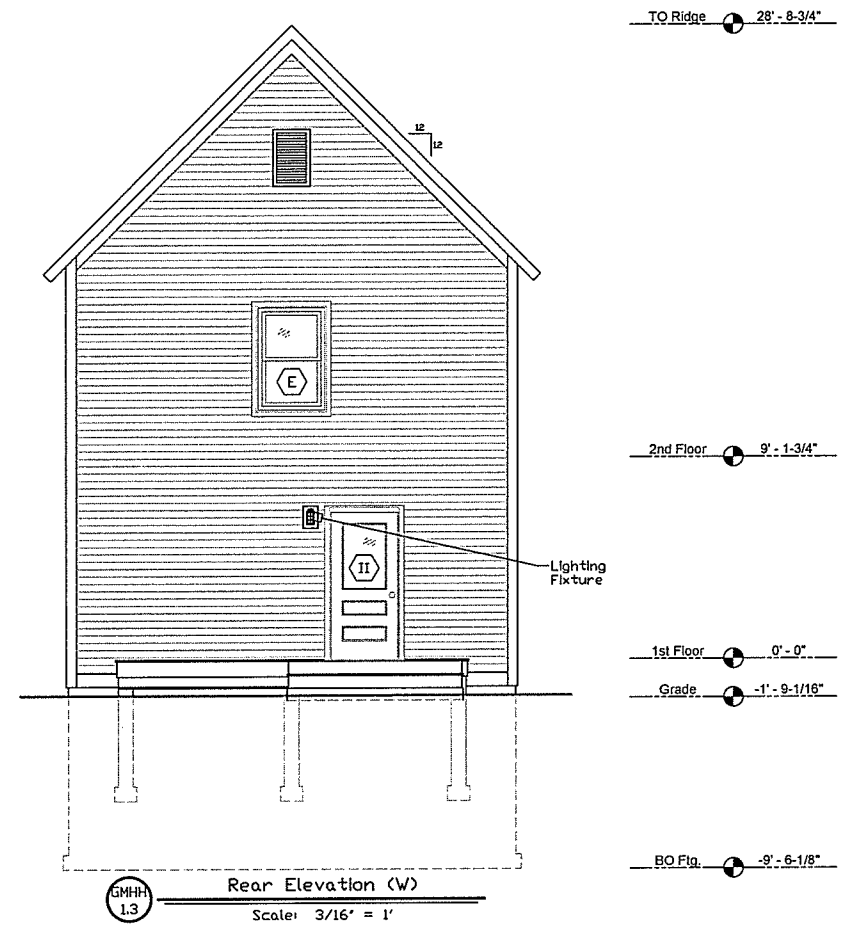
Issue Date: Dec., 2017
Rev: Jan., 2018
Rev: Feb., 2018
Rev:

Elevations

Drawn by: GMHH
Drawing #: 3 of 5

GMHH-3.0

Scale: 3/16" = 1'



Green Mountain Habitat for Humanity
36 Convent Square
Burlington, VT

RECEIVED

FEB 26 2018

DEPARTMENT OF
PLANNING & ZONING

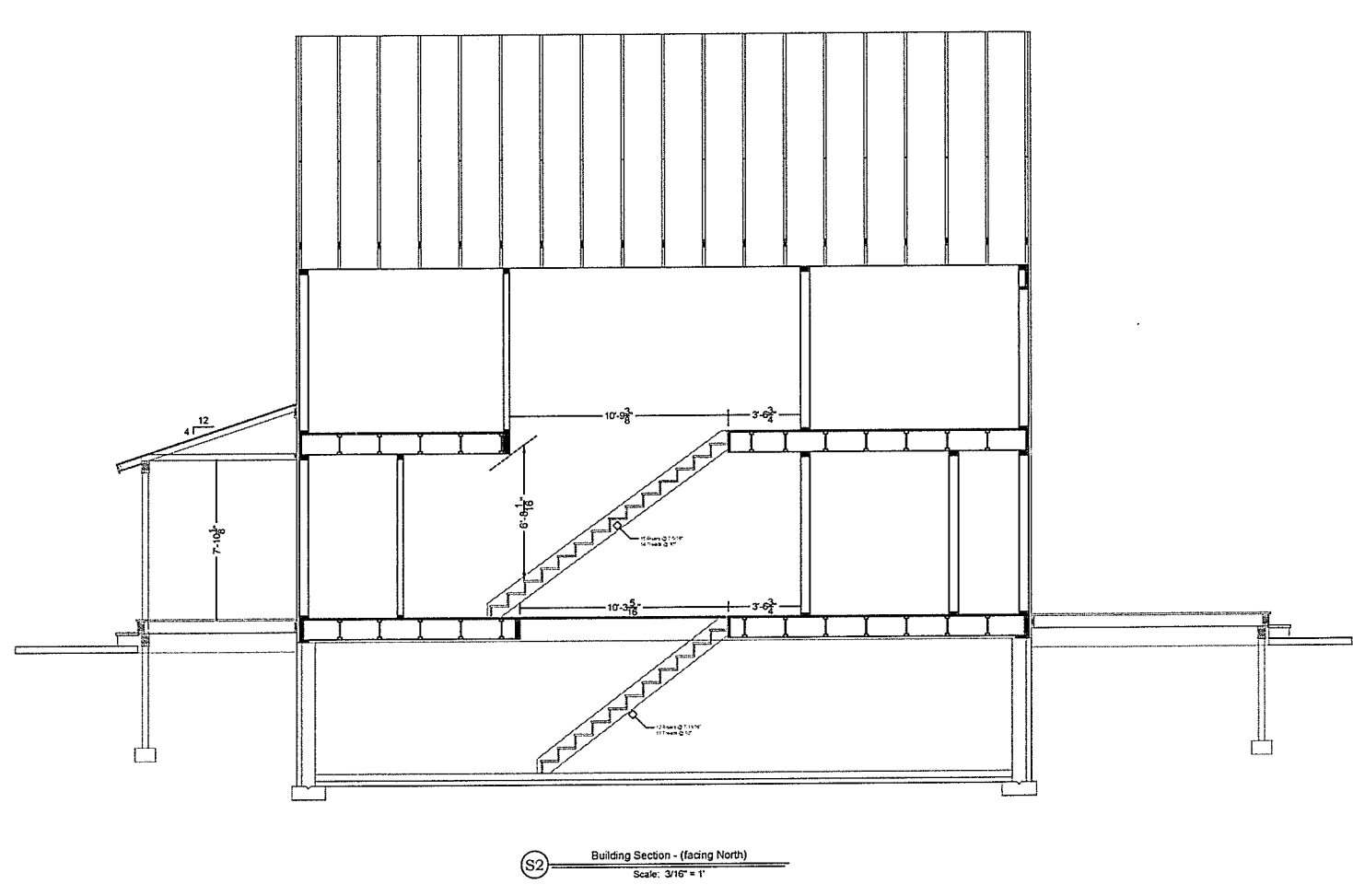
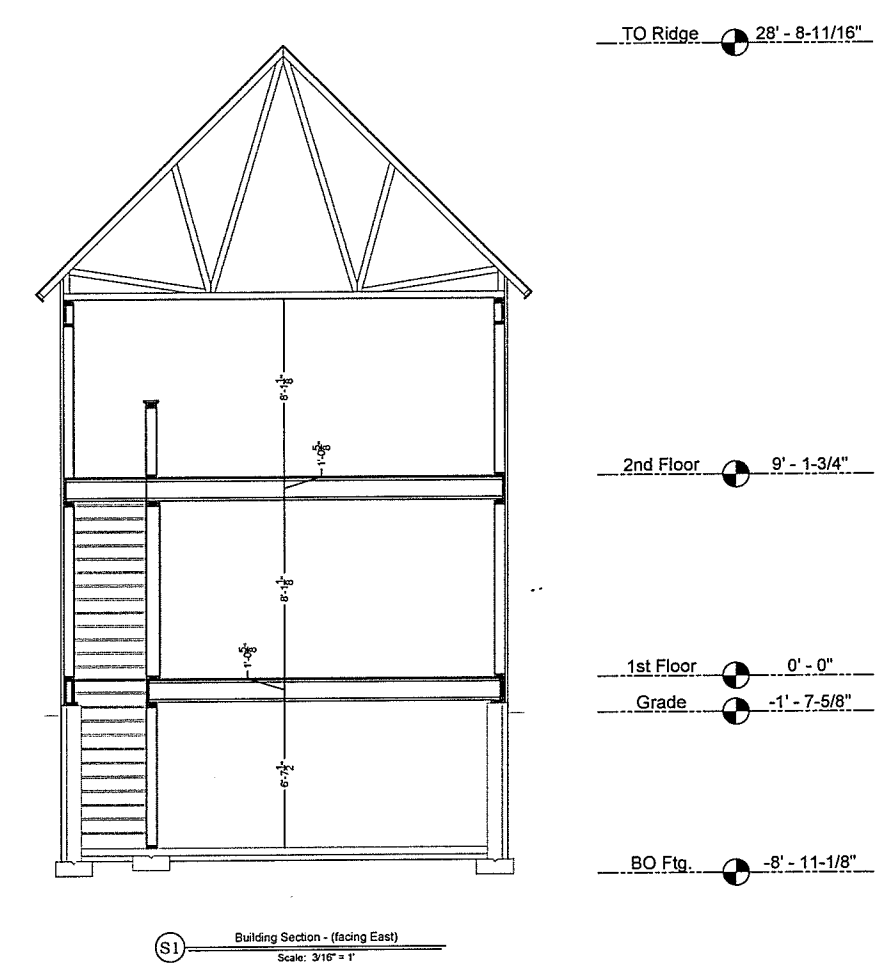
Issue Date: Sept., 2017
Rev: Jan., 2018
Rev: Feb., 2018
Rev:

Section
Views

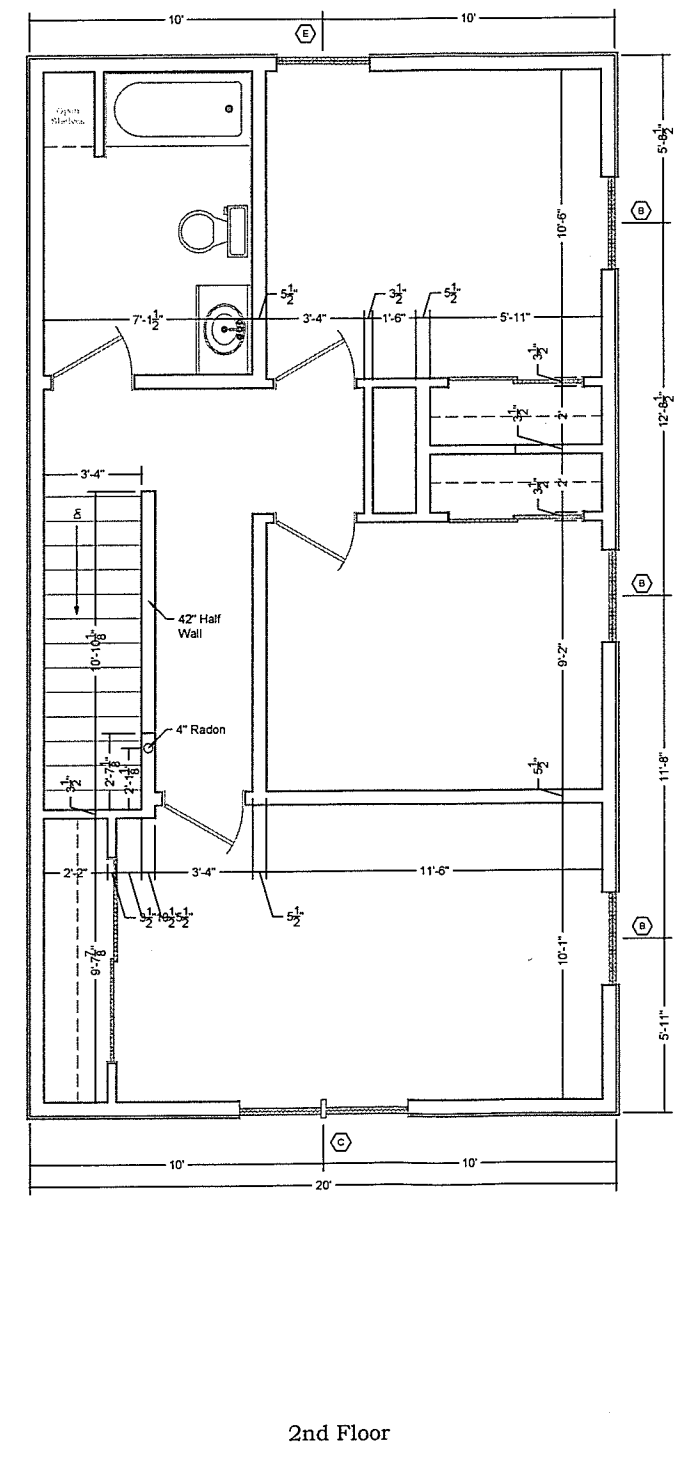
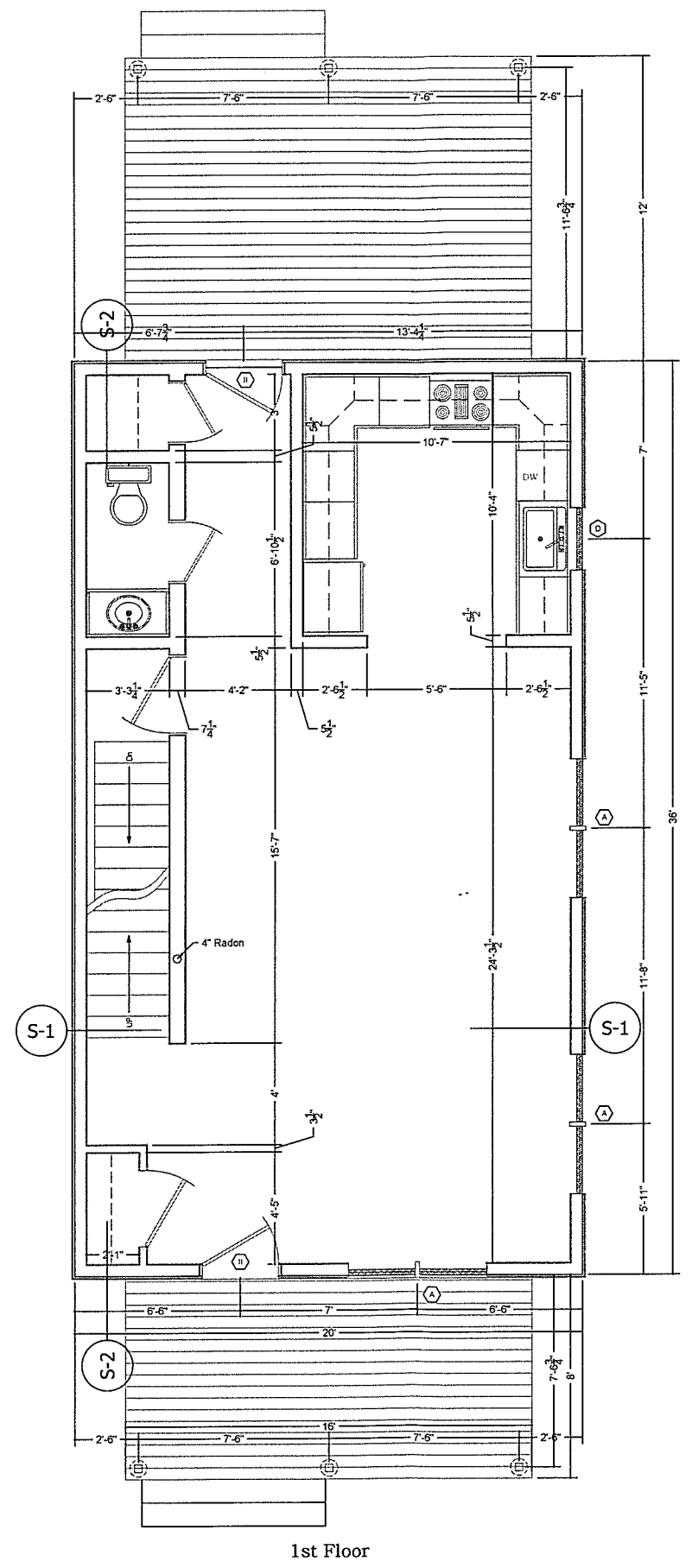
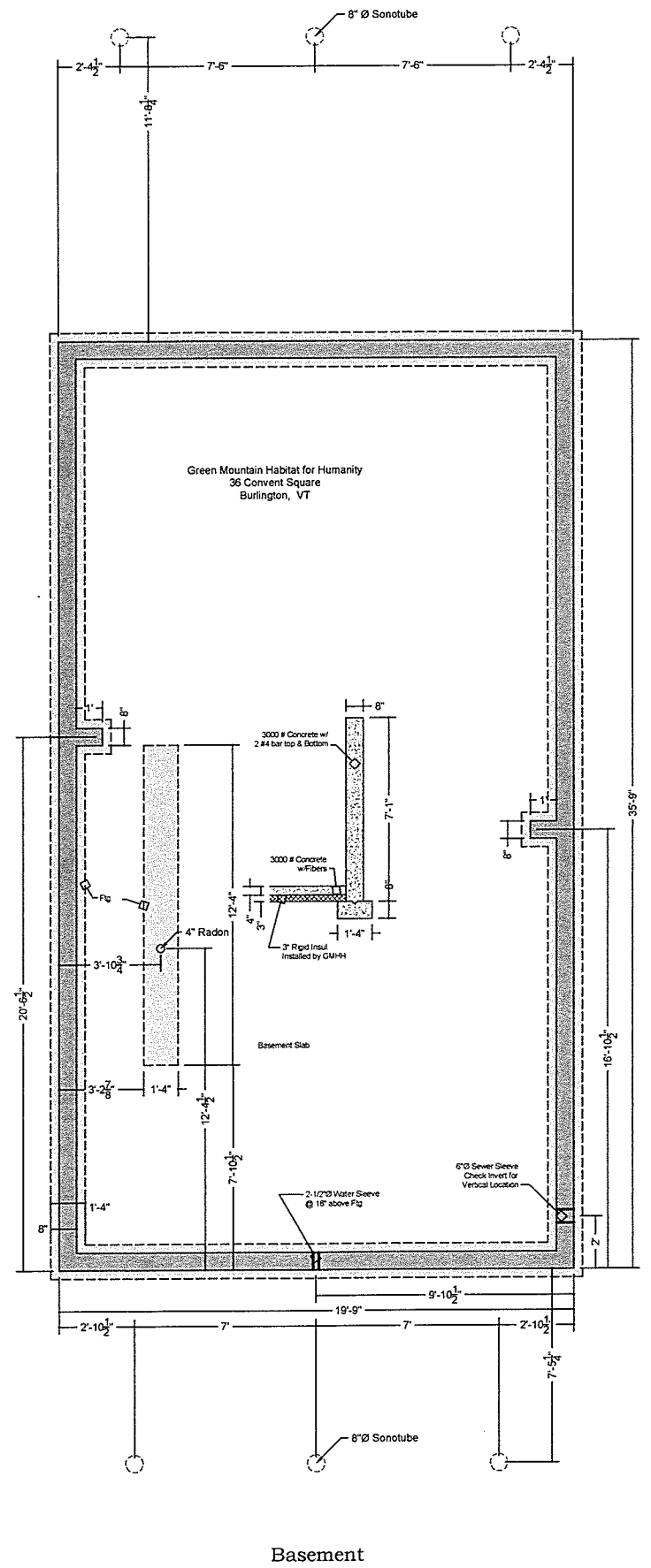
Drawn by: GMHH
Drawing #: 4 of 5

GMHH-4.0

Scale: 3/16" = 1'



Window & Ext. Door Schedule					
Rm.	Qt.	Symb	Manufacturer	Number	Rough Opening WxH
LR	3	A	Harvey-Class	28410-2	66-1/4" x 61-1/2"
MBR, Br-2, BR-3	3	B	Harvey-Class	31410	38" x 61-1/2"
MBR	1	C	Harvey-Class	2942-2	69-1/4" x 53-1/2"
KL	1	D	Harvey-Class	24210	30" x 37-1/2"
BR-3	1	E	Harvey-Class	3046	38" x 57-1/2"
Var.	2	II	Therma-Tru	Smooth Star-S104	38 1/2" x 82 1/2"



Green Mountain Habitat for Humanity
36 Convent Square
Burlington, VT

RECEIVED
FEB 26 2018
DEPARTMENT OF
PLANNING & ZONING

Issue Date: Dec., 2017
Rev: Jan., 2018
Rev: Feb., 2018
Rev:

Plan Views

Drawn by: GMHH
Drawing #: 3 of 5

GMHH-2.0

Scale: 1/4" = 1'