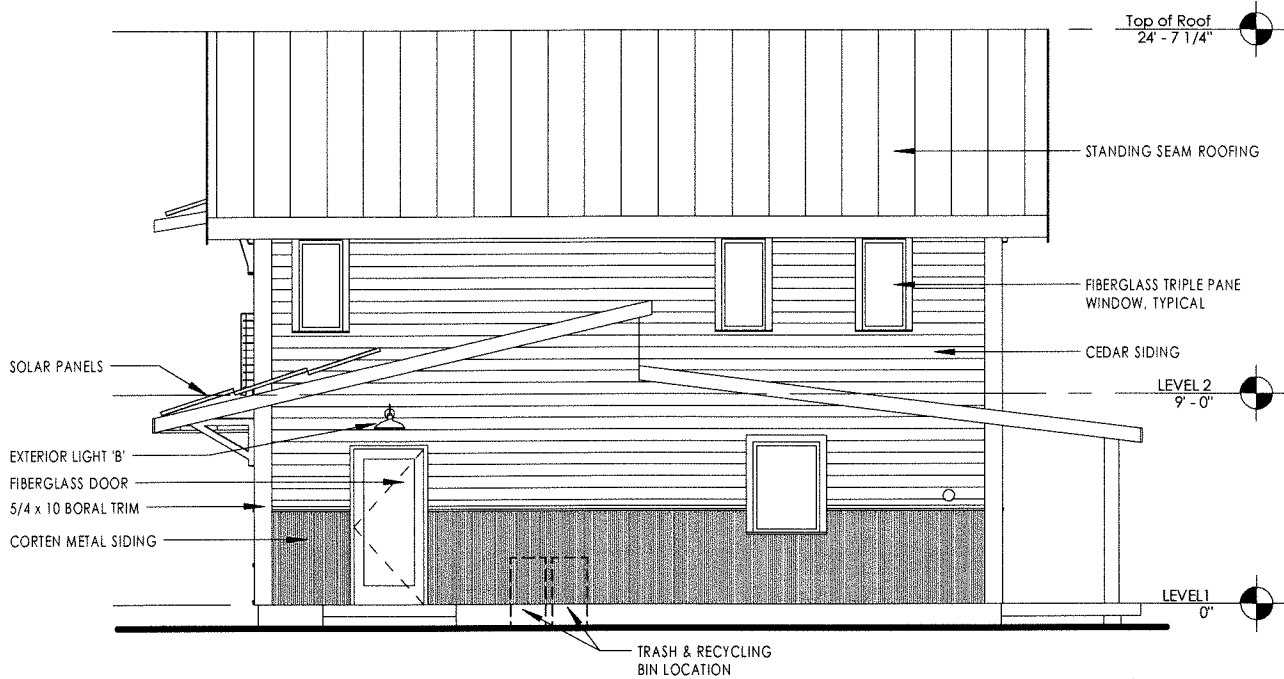


**SOUTH ELEVATION**

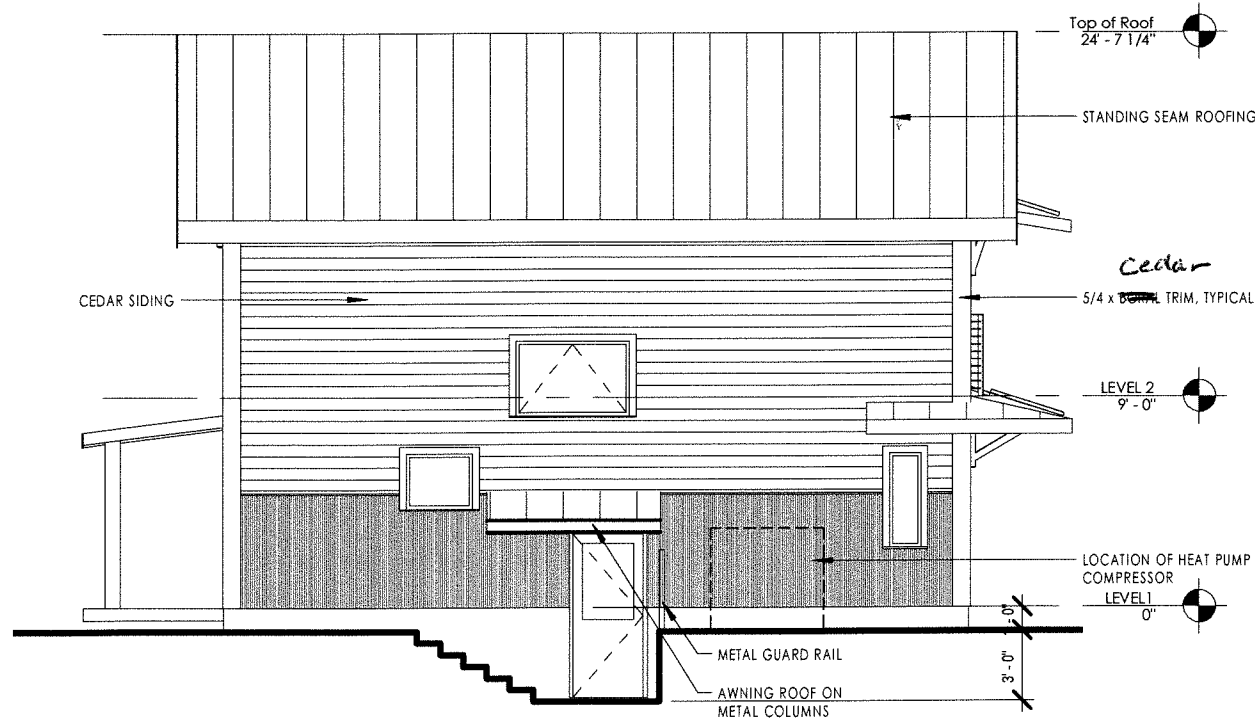
Glazing percentage: 23.4% with 2 windows in bedroom, 26.76% with 3 windows in bedroom



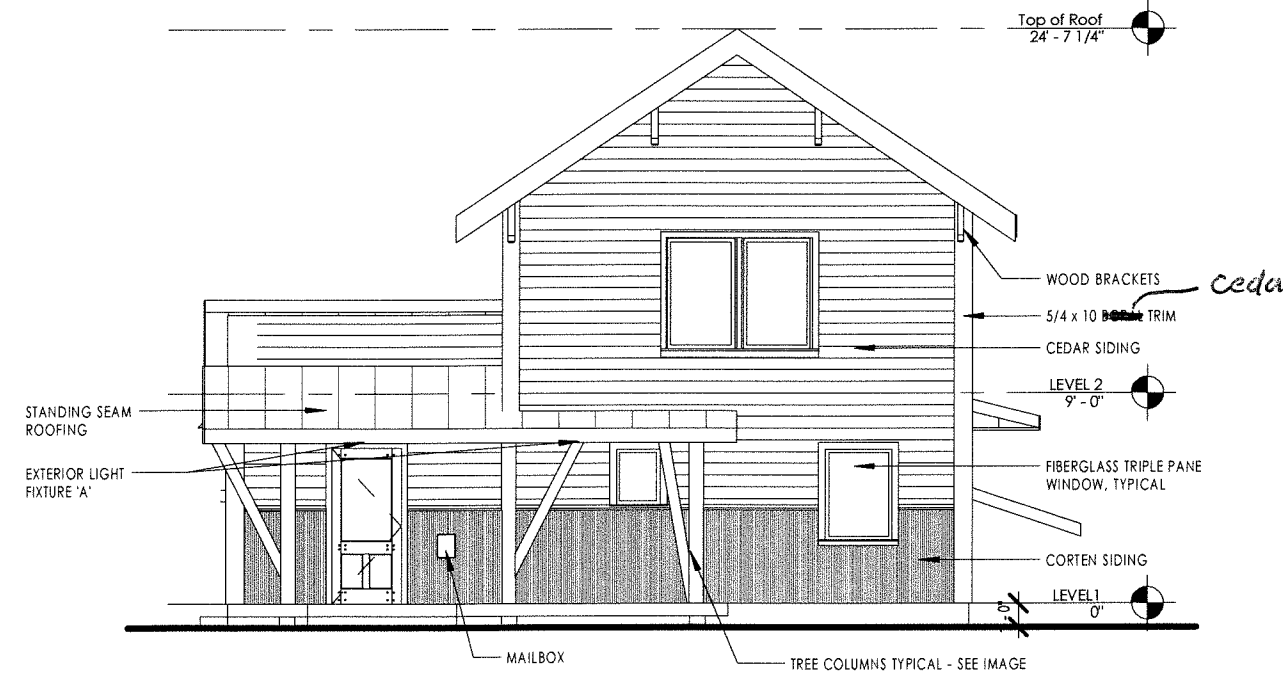
**EAST ELEVATION**

**RECEIVED**  
MAY 12 2016

DEPARTMENT OF  
PLANNING & ZONING



**WEST ELEVATION**



**NORTH ELEVATION**