



# GUNFIRE IN BURLINGTON, VERMONT

Sept 8, 2022







## GUNFIRE DEFINED

The Burlington Police Department defines **a gunfire incident** as one in which police have probable cause that a firearm was discharged and reasonable suspicion that it was discharged in a criminal manner. A gunfire incident in which a person is struck is a “shooting.” A shooting in which a person is killed is a murder.



Since 2012, when our current computerized records system was adopted, **there have been 64 gunfire incidents in Burlington recorded by police.**

From 2012 through 2019, the City averaged two gunfire incidents per year. In 2020, there were twelve. In 2021, there were fourteen. As of September 7 in 2022, there have been twenty-three.

Sept 8, 2022 – all data preliminary & subject to change





# GUNFIRE

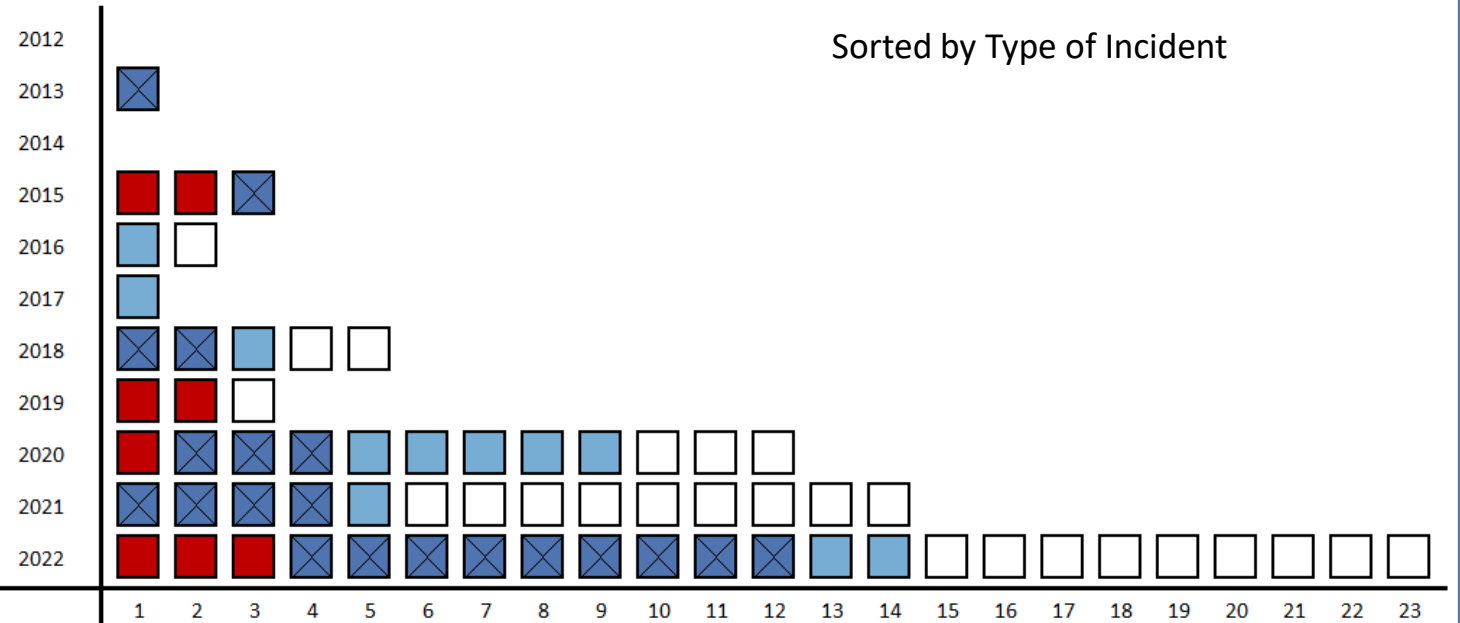
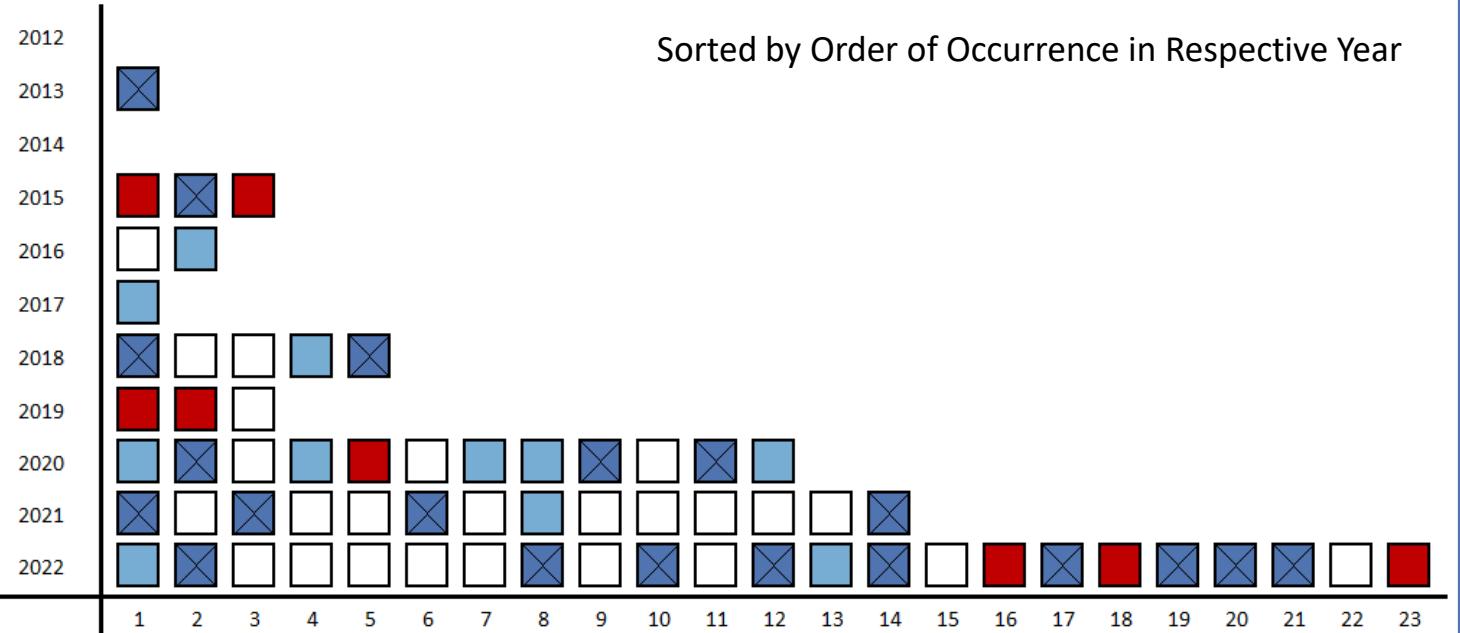
- = gunfire incident
- = gunfire incident known to be at a person
- = gunfire incident, person struck (a “shooting”)
- = gunfire incident, person killed

Since 2012, there have been 64 gunfire incidents in Burlington recorded by police. In these graphics, each box represents one incident.

The top graphic is sorted by date of occurrence, relative to the respective year; i.e., the left-most box is earliest of the year while the right-most box is last incident of the year (or most recent, for 2022).

The bottom graphic is sorted by incident type.

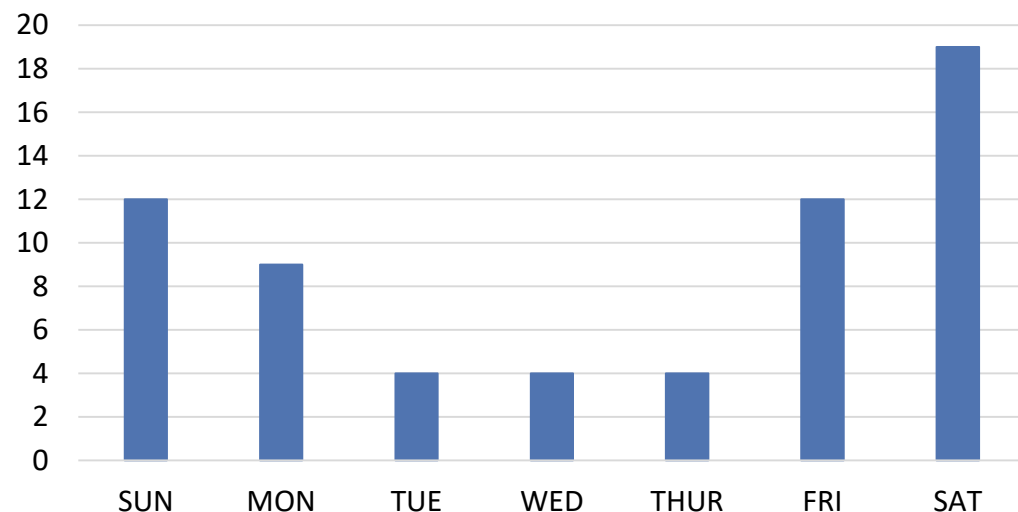
**In each graphic, 2022 is shown only through September 8, 2022, i.e., year to date.**



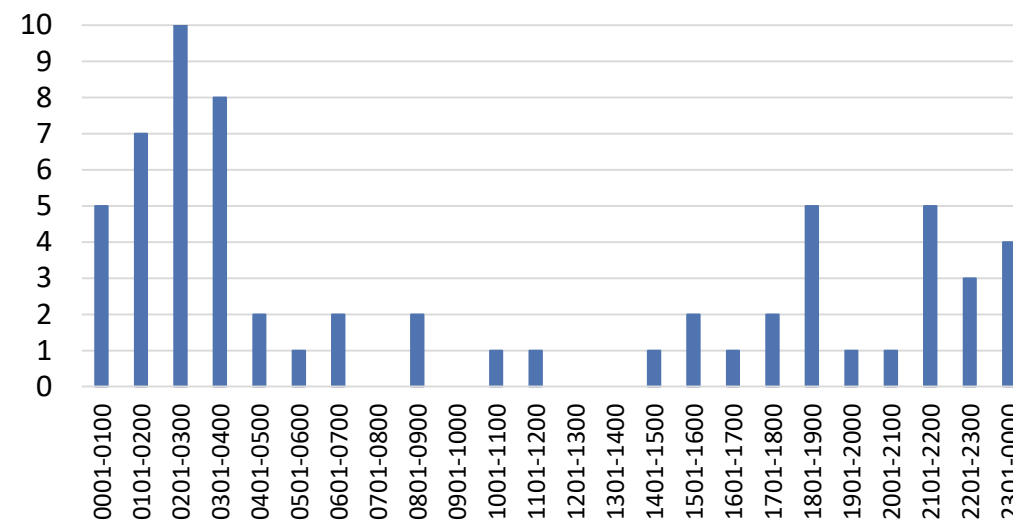


# GUNFIRE by Day of Week and Time of Day, 2012-2022

INCIDENTS BY DAY OF WEEK



INCIDENTS BY TIME OF DAY



From 2012 through 2022 YTD (09/07), there have been 64 gunfire incidents. The most common day of the week for gunfire is Saturday. The most common time of day for gunfire is between 0201 and 0300 in the morning.



# GUNFIRE OVERVIEW, 2012 to 2022

Since 2012, there have been 64 gunfire incidents. In that time, there have been 330,838 incidents. Gunfire incidents occur in one out of every 5,200 incidents.

**From 2012 to 2022 YTD, gunfire represents 0.019% of incidents.**

Since 2020, there have been 49 gunfire incidents. In that time, there have been 62,174 incidents. Gunfire occurs in one out of every 1,300 incidents.

**From 2020 to 2022 YTD, gunfire represents 0.079% of incidents.**

So these are VERY SMALL numbers. But, year-to-date in 2022, compared to the year-to-date five-year average of the preceding years 2017 through 2021, gunfire in 2022 is nevertheless up more than 350%.

These incidents affect our community greatly.





# GUNFIRE BY CALENDAR

From 2012 to 2019, there were an average of two gunfire incidents per year (15 total). Since 2020, there has been a steep increase. These graphics show when gunfire occurred in 2020, 2021, and 2022 YTD.

	S	M	T	W	Th	F	S	S	M	T	W	Th	F	S	S	M	T	W	Th	F	S
JAN	2021																				
FEB	24	25	26	27	28	29	30	31	1	2	3	4	5	6	7	8	9	10	11	12	13
MAR	21	22	23	24	25	26	27	28	1	2	3	4	5	6	7	8	9	10	11	12	13
APR	21	22	23	24	25	26	27	28	29	30	31	1	2	3	4	5	6	7	8	9	10
MAY	18	19	20	21	22	23	24	25	26	27	28	29	30	1	2	3	4	5	6	7	8
JUN	16	17	18	19	20	21	22	23	24	25	26	27	28	29	30	31	1	2	3	4	5
JUL	13	14	15	16	17	18	19	20	21	22	23	24	25	26	27	28	29	30	1	2	3
AUG	11	12	13	14	15	16	17	18	19	20	21	22	23	24	25	26	27	28	29	30	31
SEP	8	9	10	11	12	13	14	15	16	17	18	19	20	21	22	23	24	25	26	27	28
OCT	5	6	7	8	9	10	11	12	13	14	15	16	17	18	19	20	21	22	23	24	25
NOV	31	1	2	3	4	5	6	7	8	9	10	11	12	13	14	15	16	17	18	19	20
DEC	28	29	30	1	2	3	4	5	6	7	8	9	10	11	12	13	14	15	16	17	18
	26	27	28	29	30	31															

	S	M	T	W	Th	F	S	S	M	T	W	Th	F	S	S	M	T	W	Th	F	S
JAN	2020																				
FEB	26	27	28	29	30	31	1	2	3	4	5	6	7	8	9	10	11	12	13	14	15
MAR	23	24	25	26	27	28	29	1	2	3	4	5	6	7	8	9	10	11	12	13	14
APR	22	23	24	25	26	27	28	29	30	31	1	2	3	4	5	6	7	8	9	10	11
MAY	19	20	21	22	23	24	25	26	27	28	29	30	1	2	3	4	5	6	7	8	9
JUN	17	18	19	20	21	22	23	24	25	26	27	28	29	30	31	1	2	3	4	5	6
JUL	14	15	16	17	18	19	20	21	22	23	24	25	26	27	28	29	30	1	2	3	4
AUG	12	13	14	15	16	17	18	19	20	21	22	23	24	25	26	27	28	29	30	31	1
SEP	9	10	11	12	13	14	15	16	17	18	19	20	21	22	23	24	25	26	27	28	29
OCT	6	7	8	9	10	11	12	13	14	15	16	17	18	19	20	21	22	23	24	25	26
NOV	4	5	6	7	8	9	10	11	12	13	14	15	16	17	18	19	20	21	22	23	24
DEC	1	2	3	4	5	6	7	8	9	10	11	12	13	14	15	16	17	18	19	20	21
	29	30	1	2	3	4	5	6	7	8	9	10	11	12	13	14	15	16	17	18	19
	27	28	29	30	31																

	S	M	T	W	Th	F	S	S	M	T	W	Th	F	S	S	M	T	W	Th	F	S
JAN	2022																				
FEB	23	24	25	26	27	28	29	30	31	1	2	3	4	5	6	7	8	9	10	11	12
MAR	20	21	22	23	24	25	26	27	28	29	30	31	1	2	3	4	5	6	7	8	9
APR	20	21	22	23	24	25	26	27	28	29	30	31	1	2	3	4	5	6	7	8	9
MAY	17	18	19	20	21	22	23	24	25	26	27	28	29	30	31	1	2	3	4	5	6
JUN	15	16	17	18	19	20	21	22	23	24	25	26	27	28	29	30	31	1	2	3	4
JUL	12	13	14	15	16	17	18	19	20	21	22	23	24	25	26	27	28	29	30	31	1
AUG	10	11	12	13	14	15	16	17	18	19	20	21	22	23	24	25	26	27	28	29	30
SEP	7	8	9	10	11	12	13	14	15	16	17	18	19	20	21	22	23	24	25	26	27
OCT	4	5	6	7	8	9	10	11	12	13	14	15	16	17	18	19	20	21	22	23	24
NOV	2	3	4	5	6	7	8	9	10	11	12	13	14	15	16	17	18	19	20	21	22
DEC	30	31	1	2	3	4	5	6	7	8	9	10	11	12	13	14	15	16	17	18	19
	27	28	29	30	1	2	3	4	5	6	7	8	9	10	11	12	13	14	15	16	17
	25	26	27	28	29	30	31														



# GUNFIRE SINCE 2020 and in 2022

Of the 49 incidents since 2020:

- About 20 have been shootings, where a person was struck and injured or killed
- About 29 have resulted in an arrest or closure
- About 16 have nearly no solvability factors at this time
- About 11 have taken place in or around the downtown core and in the five-hour span around bar closing
- About 22 incidents have involved young Burlingtonians known to police for preexisting criminal associations. Those people may be involved as perpetrators, victims, suspects, or some combination thereof

Of the 23 incidents in 2022:

- About six do not have any solvability factors
- Twelve have involved a person being struck, and three of those have been murders
- BPD has made arrests in 13 of those 23 cases, and in seven of the 12 cases where someone was struck

