



Re-Imagining the **Burlington Town Center**

BURLINGTON TOWN CENTER

DEVONWOOD INVESTORS, LLC

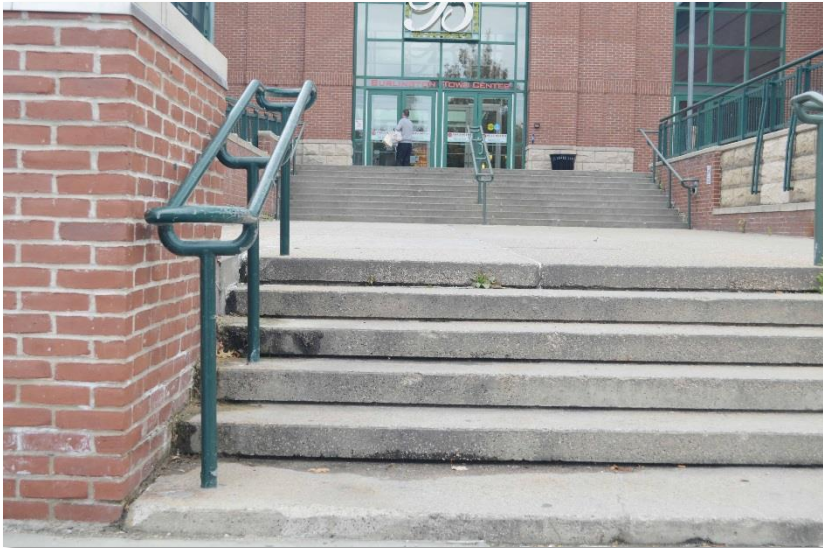
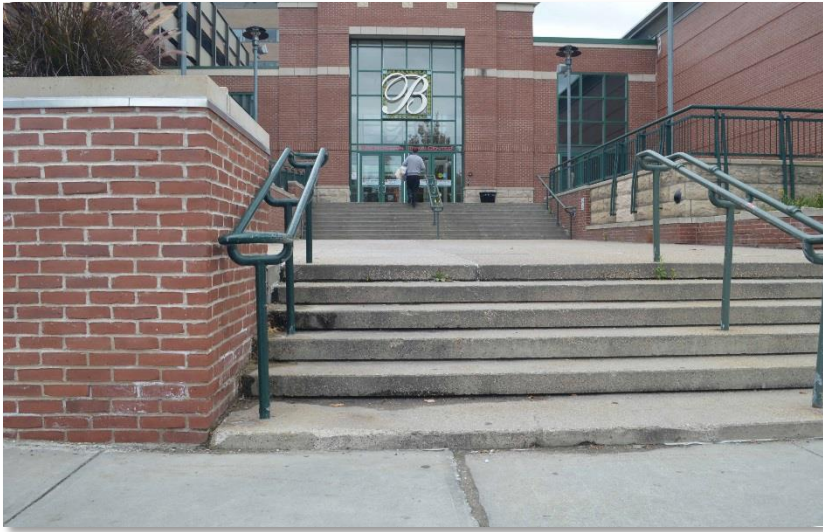
PKSB ARCHITECTS, PC



BURLINGTON TOWN CENTER

DEVONWOOD INVESTORS. LLC

PKSB ARCHITECTS, PC



BURLINGTON TOWN CENTER

DEVONWOOD INVESTORS. LLC



STREET WALLS AND ENTRIES ARE RECESSED FROM SIDEWALKS

PKSB ARCHITECTS, PC



BURLINGTON TOWN CENTER

DEVONWOOD INVESTORS, LLC



PARKING GARAGE IS LIMITED IN SIZE

PKSB ARCHITECTS, PC



BURLINGTON TOWN CENTER

DEVONWOOD INVESTORS, LLC



EXISTING MALL

PKSB ARCHITECTS, PC



City of Burlington

BURLINGTON TOWN CENTER

DEVONWOOD INVESTORS, LLC

PKSB ARCHITECTS, PC





BURLINGTON TOWN CENTER

DEVONWOOD INVESTORS. LLC

PKSB ARCHITECTS, PC



BURLINGTON TOWN CENTER

DEVONWOOD INVESTORS, LLC

PKSB ARCHITECTS, PC



BURLINGTON TOWN CENTER

DEVONWOOD INVESTORS, LLC

PKSB ARCHITECTS, PC

An aerial photograph of a city center, likely Burlington, Vermont, showing a mix of historic and modern architecture. A large, modern, multi-story building with a grid-like facade is highlighted with a semi-transparent grey box. The surrounding area includes older brick buildings, a church with a steeple, and a parking lot filled with cars. The text "Updated Design" is overlaid in the center of the image.

Updated Design

BURLINGTON TOWN CENTER

DEVONWOOD INVESTORS, LLC

PKSB ARCHITECTS, PC

We listened...

Changes to Plan

- Eliminated St. Paul underground mall corridor to open all retail & services to the street, including the new, fully accessible blocks at St. Paul and Pine.
- Reduced massing of residential upper stories to lighten and improve the spaces.
- Reduced the upper floor massing – only 16% of total project footprint will rise to 160 foot height.
- Added housing on lower levels to front on Bank and Cherry Streets to maximize apartments and further buffer parking from view.

We listened...

Changes to Plan

- 20% of the housing – 55 units – Will be permanently inclusionary units. Units will be located throughout the buildings in a mix of market and inclusionary.
- Preserved Church Street façade height and massing, while upgrading and expanding the entrance.
- Incorporated detailed urban design standards required by new zoning for more brick and façade articulation, lighter elements on upper floors, and screened mechanicals.
- Utilized the new great streets design standards for all



BURLINGTON TOWN CENTER

DEVONWOOD INVESTORS, LLC

SOUTHWEST AERIAL

PKSB ARCHITECTS, PC



BURLINGTON TOWN CENTER

DEVONWOOD INVESTORS, LLC

NORTHEAST AERIAL

PKSB ARCHITECTS, PC

An aerial photograph of a city center, likely Burlington, Vermont. The image shows a mix of modern and historic architecture. In the center, there's a large, modern building with a glass facade and a flat roof. To its left is a brick building with a flat roof. To the right, there's a church with a prominent steeple. The surrounding area is filled with smaller buildings, trees, and parking lots. The text "Street Views" is overlaid in the center of the image.

Street Views

BURLINGTON TOWN CENTER

DEVONWOOD INVESTORS, LLC

PKSB ARCHITECTS, PC



BURLINGTON TOWN CENTER

DEVONWOOD INVESTORS, LLC

CORNER OF CHERRY ST. AND ST. PAUL ST.

PKSB ARCHITECTS, PC



BURLINGTON TOWN CENTER

DEVONWOOD INVESTORS, LLC

ST. PAUL STREET LOOKING SOUTH

PKSB ARCHITECTS, PC



BURLINGTON TOWN CENTER

DEVONWOOD INVESTORS, LLC

CORNER OF CHERRY ST. AND PINE. ST

PKSB ARCHITECTS, PC



BURLINGTON TOWN CENTER

DEVONWOOD INVESTORS. LLC

CORNER OF BANK ST. AND ST. PAUL ST.

PKSB ARCHITECTS, PC



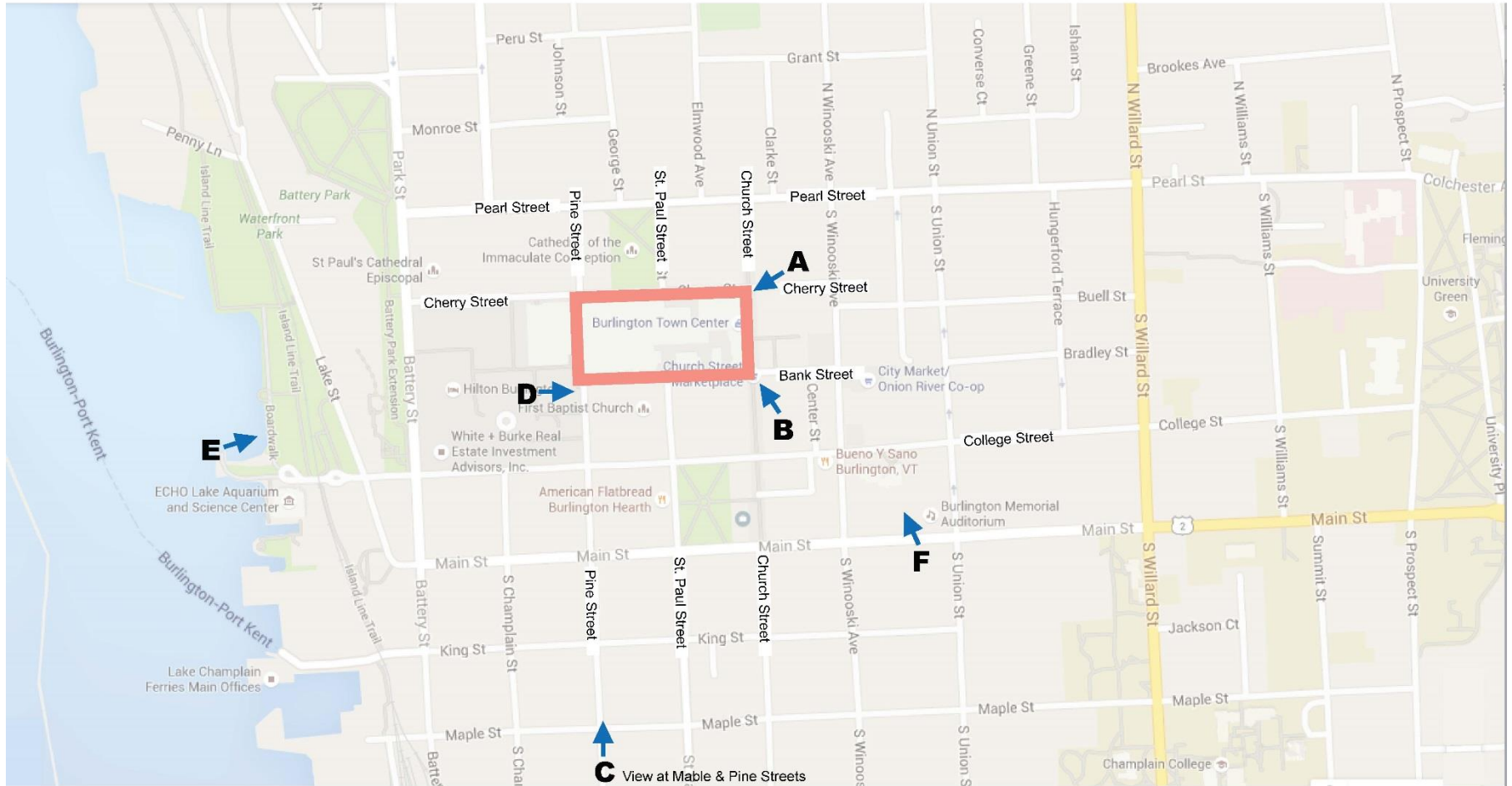
An aerial photograph of a city center, likely Burlington, Vermont. The image shows a mix of old and new architecture. A large, modern, multi-story building with a glass and steel facade is the central focus, appearing to be under construction or recently completed. It is surrounded by older, brick buildings of various heights. There are several parking lots with cars visible. The background shows a dense residential area with many small houses and trees. The overall scene is a mix of urban development and historic preservation.

Before & After Views

BURLINGTON TOWN CENTER

DEVONWOOD INVESTORS, LLC

PKSB ARCHITECTS, PC



BURLINGTON TOWN CENTER

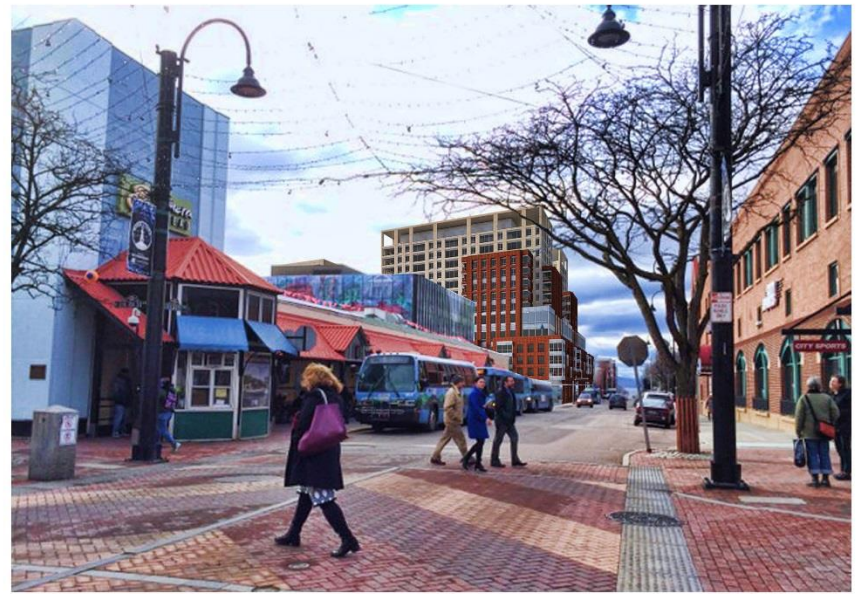
DEVONWOOD INVESTORS, LLC

VIEW KEY MAP

PKSB ARCHITECTS, PC



VIEW A – CORNER OF CHURCH ST. & CHERRY ST. BEFORE



VIEW A – CORNER OF CHURCH ST. & CHERRY ST. AFTER



VIEW B – CORNER OF CHURCH ST. & BANK ST. BEFORE



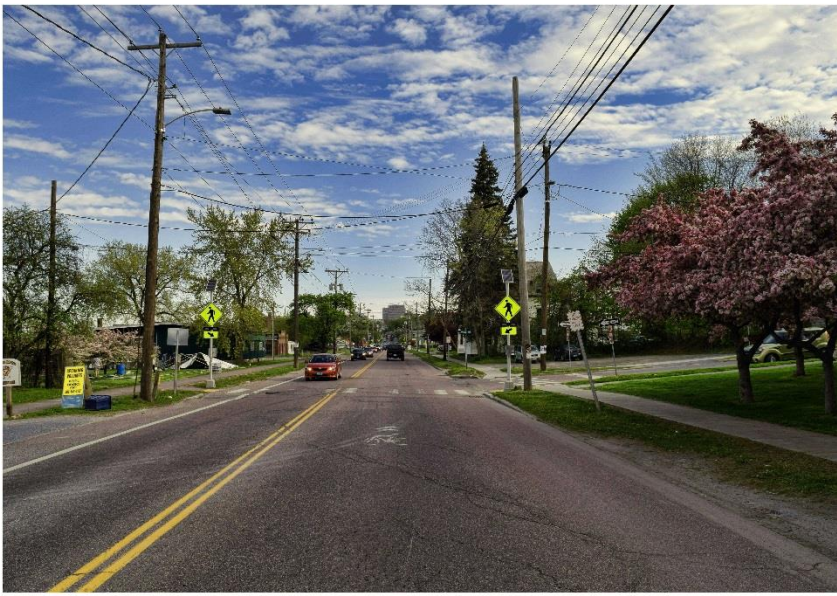
VIEW B – CORNER OF CHURCH ST. & BANK ST. AFTER

BURLINGTON TOWN CENTER

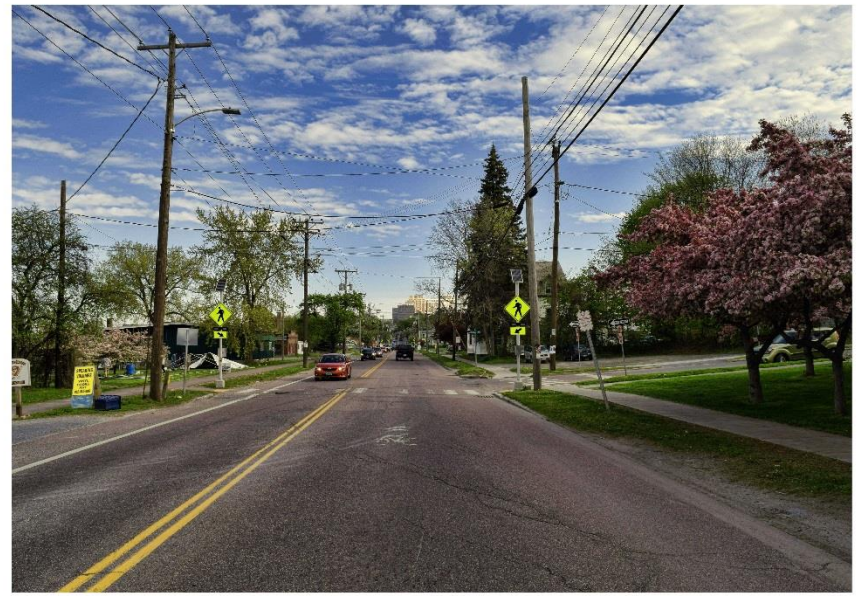
DEVONWOOD INVESTORS. LLC

BEFORE AND AFTER

PKSB ARCHITECTS, PC



VIEW C – CORNER OF MARBLE ST. & PINE ST. BEFORE



VIEW C – CORNER OF MARBLE ST. & PINE ST. AFTER



VIEW D – CORNER OF PINE ST. & BANK ST. BEFORE



VIEW D – CORNER OF PINE ST. & BANK ST. AFTER

BURLINGTON TOWN CENTER

DEVONWOOD INVESTORS. LLC

BEFORE AND AFTER

PKSB ARCHITECTS, PC



VIEW E – LAKE CHAMPLAIN BEFORE



VIEW E – LAKE CHAMPLAIN AFTER



VIEW F – CHAMPLAIN COLLEGE BEFORE



VIEW F – CHAMPLAIN COLLEGE AFTER

BURLINGTON TOWN CENTER

DEVONWOOD INVESTORS. LLC

BEFORE AND AFTER

PKSB ARCHITECTS, PC

An aerial photograph of a city center, likely Burlington, Vermont, showing a mix of historic and modern architecture. A large, modern, multi-story building with a glass facade and a flat roof is the central focus. It is surrounded by older brick buildings, some with gabled roofs and others with flat roofs. There are several parking lots with cars, and a church steeple is visible on the right side. The overall scene is a dense urban environment with a mix of greenery and built-up areas.

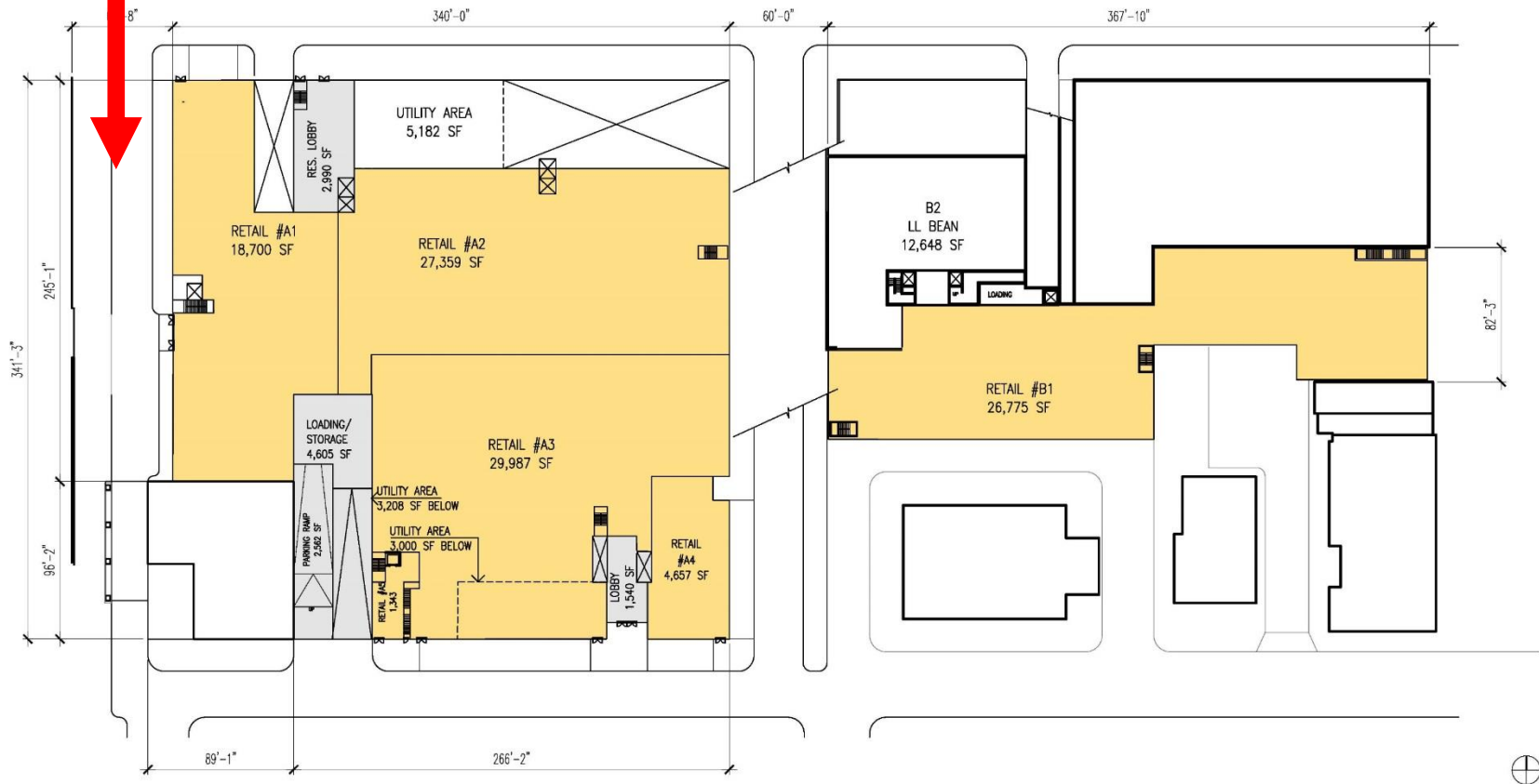
Plans

BURLINGTON TOWN CENTER

DEVONWOOD INVESTORS, LLC

PKSB ARCHITECTS, PC

NEW PINE STREET



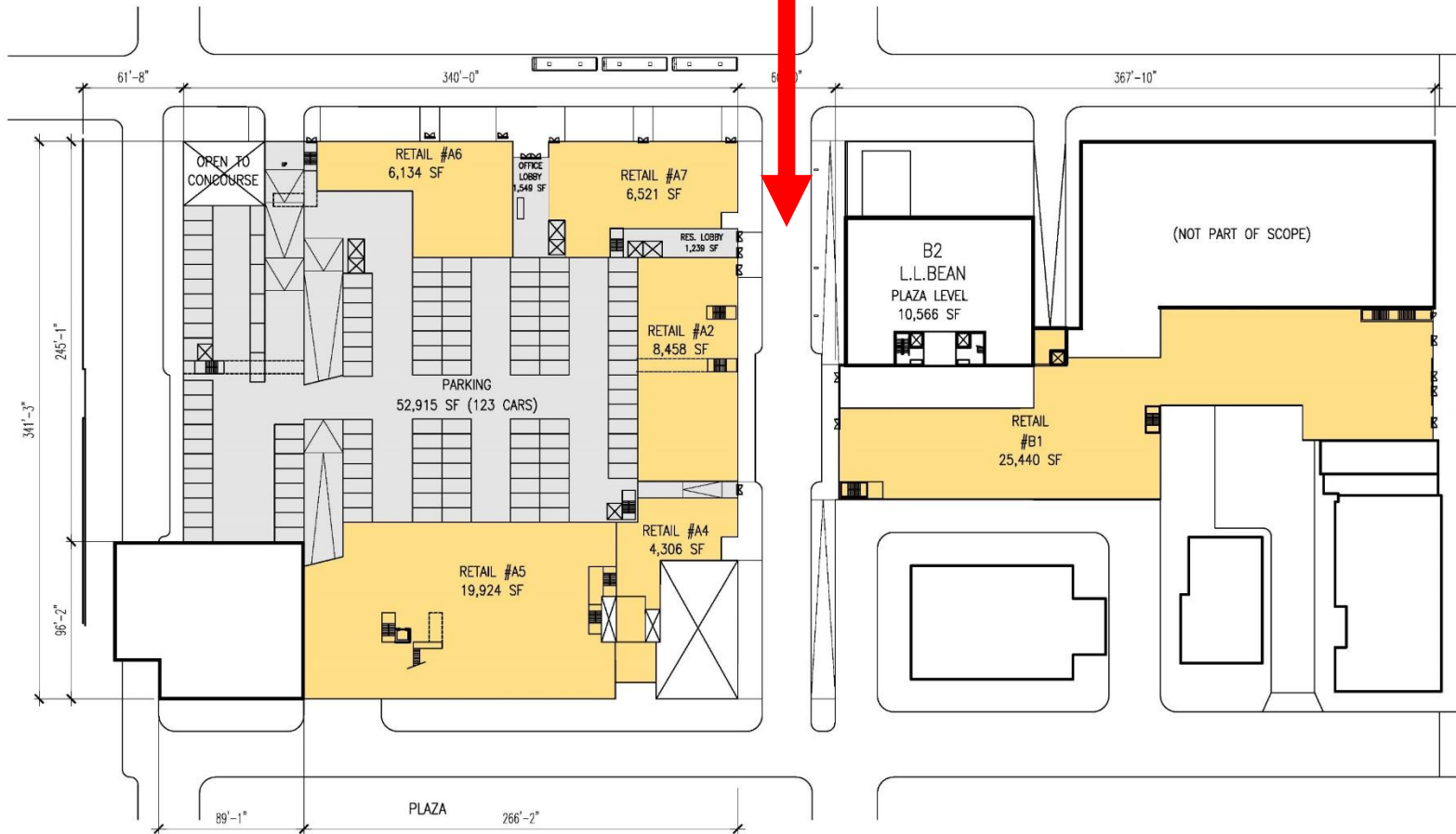
BURLINGTON TOWN CENTER

DEVONWOOD INVESTORS, LLC

CONCOURSE LEVEL

PKSB ARCHITECTS, PC

NEW ST. PAUL STREET



BURLINGTON TOWN CENTER

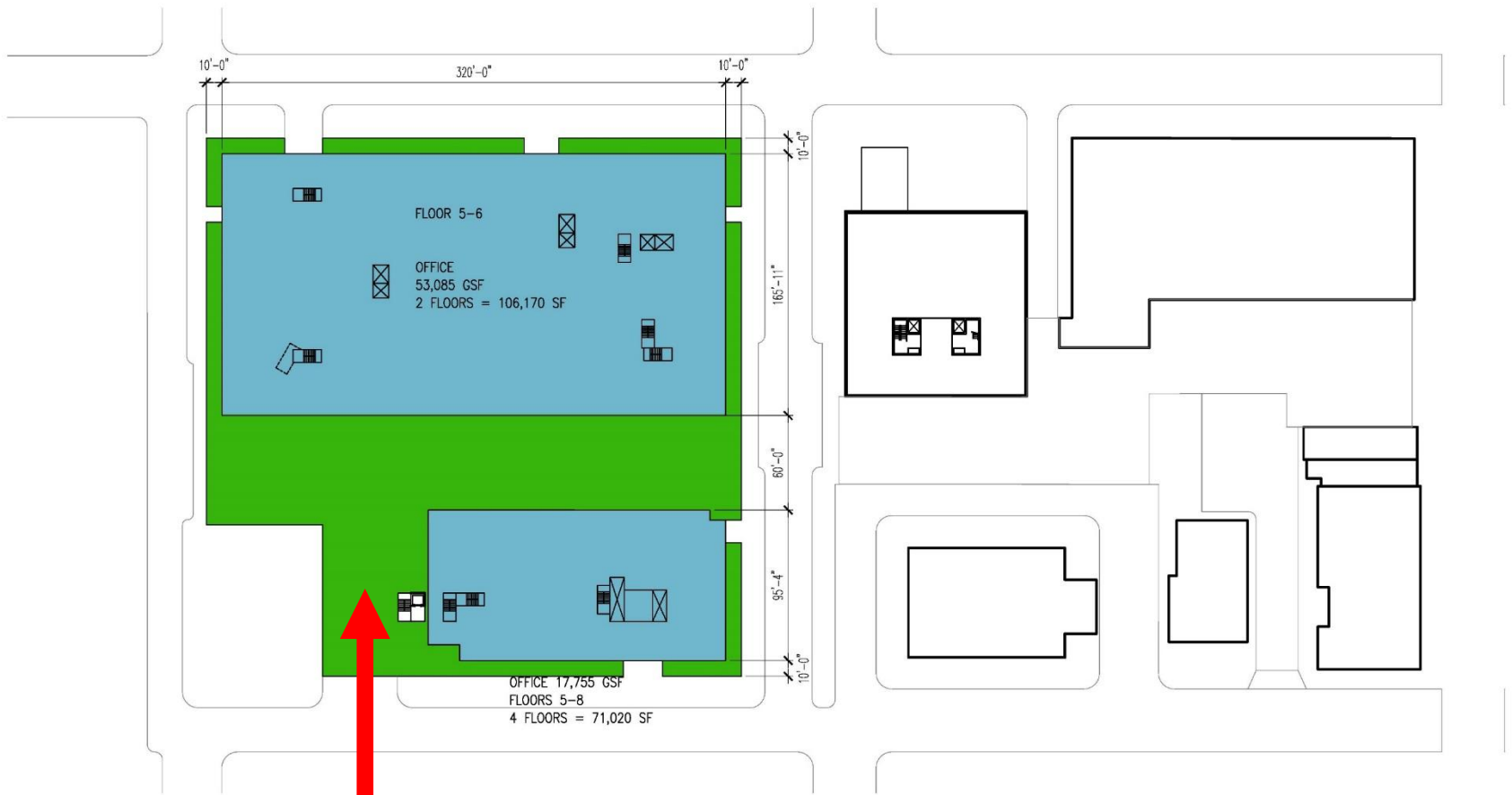
DEVONWOOD INVESTORS, LLC

PLAZA LEVEL

PKSB ARCHITECTS, PC

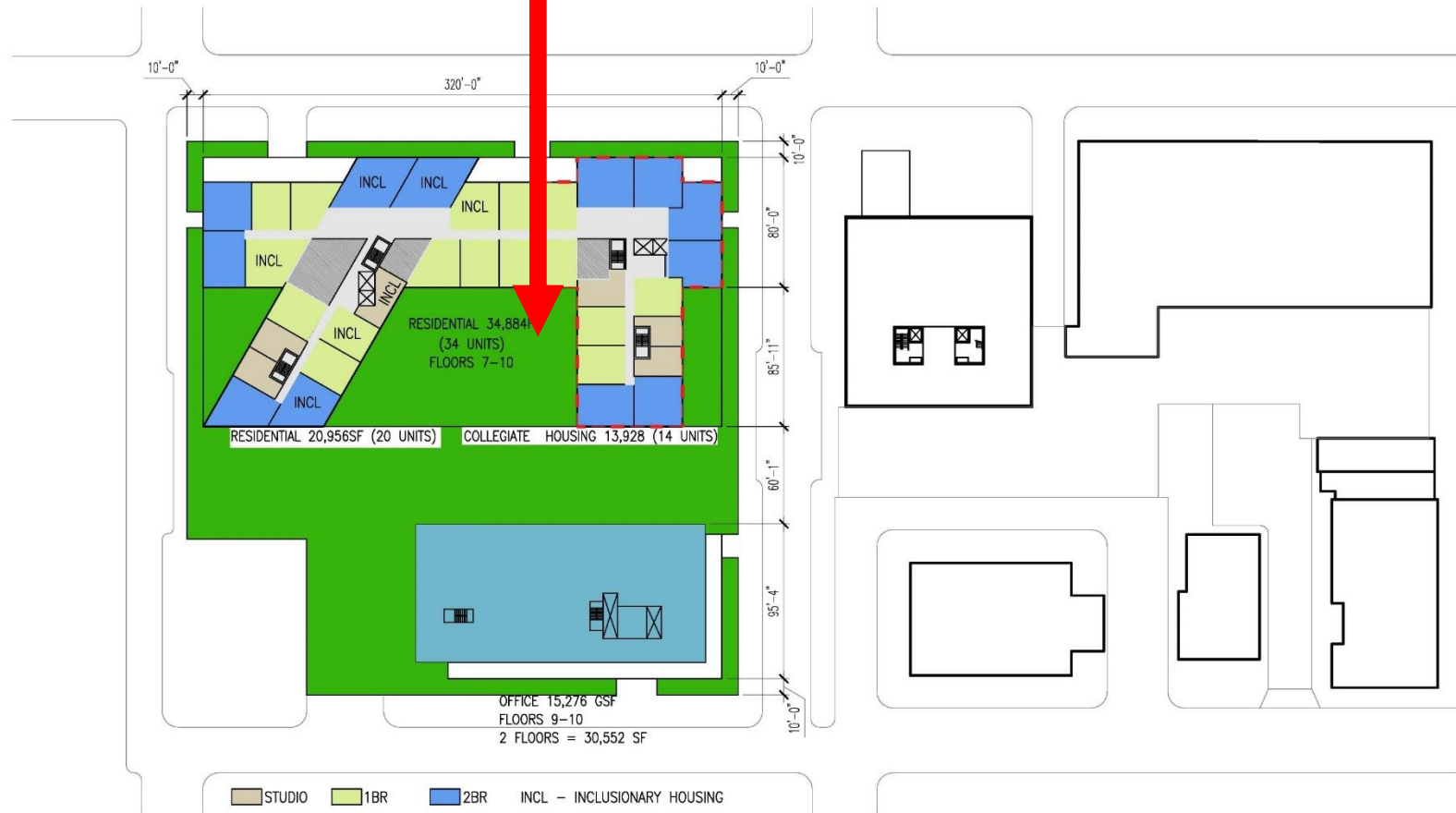
HOUSING TO SCREEN PARKING (FLOORS 2-4)





GREEN ROOF FOR WATER QUALITY

NEW SOUTH – FACING OPEN SPACE



REDUCED BUILDING FOOTPRINTS

